

TARARUA DISTRICT COUNCIL

# 2022 Super Consultation

A range of questions for you about the future of Tararua District.







# WELCOME

## to Round 1 of our 2022 Super Consultation

### WHAT IS A SUPER CONSULTATION AND WHAT DOES “ROUND 1” MEAN?

In 2022, your council has more decisions to make than ever.

With at least 7 key issues up for discussion, Council was looking at holding several separate consultations. Instead, we have chosen to pull everything together and run a “Super Consultation” - held over two rounds.

“Consultations” are the process that councils use to gather information or advice from their communities.

#### **ROUND 1 - FEBRUARY 2022**


- District Strategy (idea gathering)
- Water Supply Bylaw (pre-consultation)
- Water Tanks
- Play, Active Recreation and Sport Strategy

#### **ROUND 2 - APRIL 2022 \***

- District Strategy (draft document)
- Annual Plan 2022-2023
- Animal Control Policy

*\* final list of topics to be confirmed*

**What is a “pre-consultation”?** Pre-consultation stands for Preliminary Consultation. Preliminary means “done in preparation for something fuller or more important”. *To put it simply*, it means that Council is planning to do a formal consultation on a particular topic, but they want to gather information before they do. This way, Council is better equipped when the formal consultation takes place and can provide the community with more accurate information.

A close-up photograph of a bee on a yellow flower. The bee is positioned in the center-right of the frame, facing downwards. The flower is a bright yellow, spherical cluster of small blossoms. The background is a clear blue sky with some blurred yellow flowers, suggesting a sunny day. The overall scene is bright and natural.

A message from  
the Mayor and  
Chief Executive

We live in trying times at present, regardless of who you are and what you do, you've no doubt had to find new ways of going about living your life. There's no arguing it's a challenging time. However, times of great challenge or change offer opportunities to reimagine what the future might look like.

Now is the time for Tararua District, the *Land of Ranges*, to come together to reimagine our future and this consultation is part of that journey. It's also an opportunity to talk to you - our community - about some important decisions we need to make that will impact our future, particularly when it comes to looking after our

precious water resources and how we manage our recreation spaces.

It's important we hear your voice during our consultations in February and April so that Council can be confident the decisions we make are those that you want.

The reintroduction of the four well-beings (social, economic, cultural, and environmental) into Local Government will mean Council will increasingly focus on the needs of our people along with providing infrastructure as we have always done.

There is no better time than now to have conversations about our future as we experience unprecedented growth across the district. It's our time to dream about the future we want to pass on to the generations to come - what kind of Tararua do you want your children and grandchildren to grow up in?

As our future vision emerges Council will be able to plan for how we get there. We'll be able to know what we should start doing and, perhaps more importantly, stop doing in order to get to where we want to go.

But it won't just be Council that needs to deliver the actions necessary to achieve our dream future. We'll need to collaborate across the district so that we're all heading in the same direction - together.

That's why it's so vital you have your say during our consultations and encourage others to do the same. The more voices we hear the better the odds of achieving great outcomes for everyone who does, and will, call the *Land of Ranges* home.

**Mayor Tracey Collis**



**Chief Executive Bryan Nicholson**



# CONSULTATION

## overview

### WHY IS COUNCIL CONSULTING

As a Council, we're dedicated to making sure our strategies reflect the changing landscapes around us - and right now, it's fair to say there's a lot of change happening.

Whether it's how we manage our water, the impacts of climate change, managing our growth or what the future of Tararua looks like...

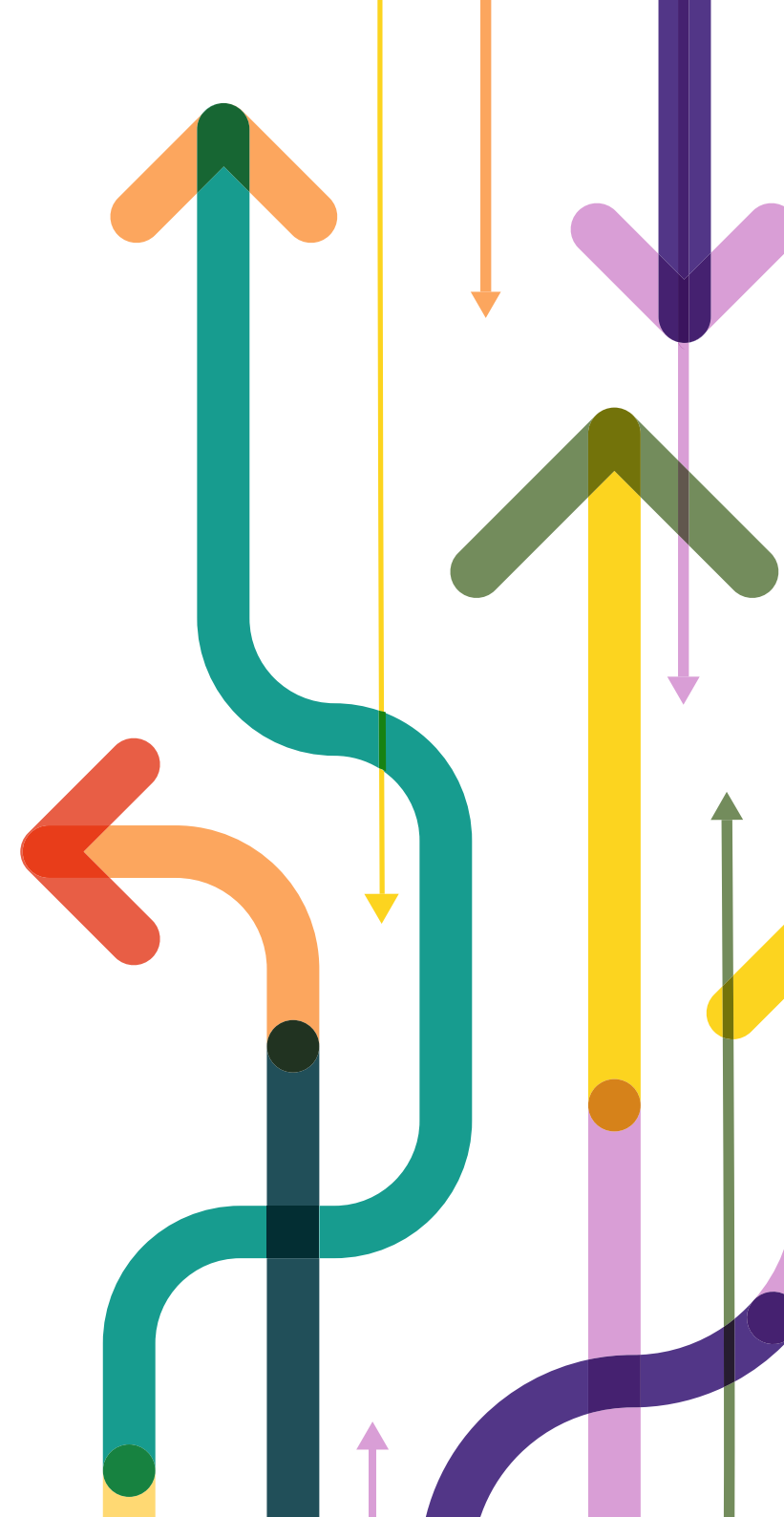
It's important that we take time now to understand how these changes will impact our people, our places, our spaces and our plans as we move forward.

We're asking some big questions this year across two rounds of public consultation. This is your chance to help shape the future of the Tararua District, so have a read and have your say!

### HOW DOES A CONSULTATION WORK

It's easy really - read this document, read the supporting information and then send your feedback to us.

We have included a submission form on the back pages of this document to make it easy for you to share your views - as well as instructions on how it all works. Go to Page 14 for details.





# SUPER CONSULTATION EXPOS

Sometimes it’s just better to talk about these things in person - so, we’re hosting expos across the district.

This way, you can access all the information you need to give your feedback on the topics that matter to you.

The expos will have “stalls” for each topic with all the information available to take away. Council staff that work in roles related to the topics will also be there to answer questions you may have.

Your elected Council members, including Mayor Tracey Collis, are coming along too, so they can hear your views about the topics in person.

**What’s an “expo”?** An expo is a large event where goods are displayed. For these events, the “goods” are the consultation topics and their supporting information.

Vaccine Pass required for entry.	
Tuesday 1 February, 2pm to 4:30pm	Woodville Sports Stadium
Thursday 10 February, 9:30am to 11:30am	Norsewood War Memorial Hall
Thursday 10 February, 2pm to 4pm	Pongaroa War Memorial Hall
Monday 14 February, 9am to 12pm	Pahiatua Town Hall
Monday 14 February, 1:30pm to 4:30pm	Eketāhuna Community Centre
Thursday 24 February, 1:30pm to 4:30pm	Dannevirke Christian Fellowship Hub (The Hub)

# ROUND 2 OF THE 2022 SUPER CONSULTATION

There’s still so much more we need to talk about, so we’ll be back in April for Round 2.

We’re still confirming the topics for the next round so look out for Super Consultation updates in March.

The current list of topics for Round 2 includes:

- **District Strategy (draft document)** - after getting your feedback in Round 1, we’ll be developing a

draft District Strategy document and this will be ready for your comments in April.

- **Annual Plan 2022-2023** - we’ll also be coming out with our Annual Plan for the next financial year (i.e. Year 2 of our current Long Term Plan).
- **Animal Control Policy** - we’re reviewing our policy for how we deliver animal control in our district and we need your input.

# #1

# DISTRICT STRATEGY

## **Let's be honest, we know that most people think what councils do is pretty boring.**

As long as water flows from the tap, the toilet flushes and we can drive on the roads we're not really that interested.

Every now and then councils do something a bit different – dare we say it, even exciting! This is one of those times and we need your help.

We're about to get underway designing the future of Tararua District and what it might look like in 2050. We want as many people from our community to let us know their big ideas for the future.

This is our once in a generation opportunity to really think about the Tararua District we will leave to future generations.

Let's make it count – together! By the way, this is different from our usual planning processes like our Long Term Plan that covers 10 years.





## WHAT ARE WE TRYING TO DO

We want to know what our people need and want for the future of their community.

We are mainly focussed on services and infrastructure across the “four well-beings” (social, economic, cultural and environmental). The four well-beings are part of the Local Government (Community Well-being) Amendment Bill which became law in 2019.

We’ll use your feedback to help us develop a 30-year strategy that will be supported by all of Council’s other planning documents and strategies.

## HOW TO GIVE FEEDBACK

### 1 Make sure you’ve read all the supporting information available:

- **District Strategy Information Sheet**

*If you don’t have a copy of what you need, you can download it from our website or call us and ask us to send it to you.*

### 2 Read our instructions for making a submission and choose the option that best suits you - see Page 14.

## HOW CAN YOU HELP

Tell us your big ideas and wildest dreams for the district! We would like everyone and anyone to share their vision for the future (even crazy ideas are welcome – spaceport in Pongaroa anyone?).

By sharing your vision with us, you will help us to understand what the future of the Tararua District could look like and give us some ideas on how we might get there.

### What’s the difference between Long Term Plan, Annual Plan and District Strategy?

Long Term Plan (LTP) is our plan for the next 10 years, with specific focus on the next 3 years. Councils are legally required to have a Long Term Plan and to review it every 3 years in consultation with the community (next review in 2024). Annual Plans detail Year 2 and Year 3 of a LTP (Year 1 is included within each LTP as it is released). These are only consulted on if there have been significant changes to what is in the LTP. This is also a legal requirement for councils. The District Strategy is a new thing for our council and focuses on developing a vision for “Tararua 2050”.



06 374 4080 or 06 376 0110  
[www.tararua.govt.nz/super](http://www.tararua.govt.nz/super)

# #2.1

# WATER SUPPLY BYLAW

## PRE-CONSULTATION

### **Council is reviewing the Tararua District Water Supply Bylaw which covers seven supply areas across the Tararua.**

Our towns are bursting at peak populations. In 2020, the north and north-east areas of the district were very dry and our ability to cope was tested. As we enter 2022, many areas remain dry and water remains a limited resource.

There is a lot of work that goes into making

water safe to drink - from access, to storage, to treatment and then supply. With the Three Waters Reform, Tararua District Council needs to ensure the direction is set correctly for the future of water in Tararua.

While the Water Supply Bylaw does not hold all the answers, it can provide some guidance to that future and this is your opportunity to help shape what that looks like.

To find out what happens after pre-consultation closes, go to Page 16.

**What's in a Water Supply Bylaw?** The purpose of the Bylaw is to:

- Ensure a safe and efficient public water supply;
- To manage and regulate Council's water supply; and
- To protect public water supply infrastructure.

## WHAT ARE WE TRYING TO DO

The draft Water Supply Bylaw 2022 is being developed and we're keen to get early feedback before we finalise the draft for public consultation.

For pre-consultation, we have prepared an information sheet with a summary of the key changes and our ideas going forward.

### We are particularly keen to hear from :

- People who use water for livestock and irrigation
- People with swimming pools
- People who use water commercially

## HOW TO GIVE FEEDBACK

### 1 Make sure you've read all the supporting information available:

- **Water Supply Bylaw Information Sheet**

*If you don't have a copy of what you need, you can download it from our website or call us and ask us to send it to you.*

### 2 Read our instructions for making a submission and choose the option that best suits you - see Page 14.

## HOW CAN YOU HELP

We need three key things from the public so that we can make the best possible decisions going forward:

### 1. Feedback on our ideas and the changes

Get a copy of the Water Supply Bylaw Information Sheet and take time to understand how it will impact you and then give us feedback.

### 2. Suggestions of other water sources that council could investigate

What are we missing? Are there water sources that Council could be investigating? Where are they?

### 3. Ideas and suggestions for managing water supply, storage and demand

We have some extremely innovative thinkers in our communities and this is a great opportunity to hear from you. We have proposed our ideas going forward (for example, water storage tanks for "non-drinking" water). Are there improvements we could make, or ways we could do it differently?



06 374 4080 or 06 376 0110  
[www.tararua.govt.nz/super](http://www.tararua.govt.nz/super)

# #2.2

# WATER TANKS

**In 2021, the Ormondville community approached their local MP and Council with a problem:**

***They could no longer access their usual local water deliveries.***

To help solve the problem, council agreed to explore supply and storage options. One option is for council to help residents buy and install large water storage tanks to use for drinking-water storage and/or rain catchment systems.

Before we make any decisions, we want to better understand the level of need in our communities - because we believe that Ormondville is not the only area challenged by supply and storage of water.

It is particularly important that we plan for the future now, as we prepare for potential changes to how we manage water as a country (i.e. impacts of climate change and the Three Waters Reform).



## WHAT ARE WE TRYING TO DO

We are looking at whether to provide access to affordable water storage systems where there is a need (or want) in a way that won't impact the cost of rates.

## HOW TO GIVE FEEDBACK

### 1 Make sure you've read all the supporting information available:

- **Water Tanks Information Sheet**

*If you don't have a copy of what you need, you can download it from our website or call us and ask us to send it to you.*

### 2 Read our instructions for making a submission and choose the option that best suits you - see Page 14.



06 374 4080 or 06 376 0110  
[www.tararua.govt.nz/super](http://www.tararua.govt.nz/super)

## HOW CAN YOU HELP

We have a couple of key questions that we need feedback on:

- Do people need (or want) water storage tanks?
- How are you currently storing water?
- If affordable tank options were provided, what would you be using the stored water for? (e.g. are you using it to water gardens or something else?)
- What tank size would you need?

### 3 You can also fill in our survey:

- Scan the QR code or go to the web link
- Call us to request a printed copy
- Collect a printed copy in person at our Expo events (see Page 5)

# #3

# PLAY, ACTIVE RECREATION AND SPORT STRATEGY

## Council is developing its first ever Play, Active Recreation and Sport Strategy for the Tararua District.

We're a pretty energetic bunch in Tararua, but have we got everything we need to live our best life?

This can mean anything from sports codes to skate parks. What does play, active recreation and sport currently look like in the district? What facilities do we need? What activities do we need? Why do we need them?

This strategy aims to set a vision and direction for the future development of play, active recreation and sport in the Tararua District. It will support and align with the District Strategy.

Having a strategy will help guide Council to plan and deliver projects and services that meet the various needs of our communities.

**What's a "sports code?"** A sports code is a type of sport. For example - cricket, netball, hockey, football and rugby are all sports codes.



## WHAT ARE WE TRYING TO DO

We are developing a Play, Active Recreation and Sport Strategy.

Right now, we're in the early stages and we're focussed on having conversations with the public to capture what we currently have in this space, what we need and what we want.

Your feedback will help us to plan and make decisions for the future of play, active recreation and sport in our district.

## HOW TO GIVE FEEDBACK

1

### Fill in our survey:

- Scan the QR code or go to the web link
- Call us to request a printed copy
- Collect a printed copy in person at our Expo events (see Page 5)



06 374 4080 or 06 376 0110  
[www.tararua.govt.nz/super](http://www.tararua.govt.nz/super)

## HOW CAN YOU HELP

We're running a survey to gather information about:

- What is the current state of play, active recreation and sport in the district?

*For example:*

*What are the main active recreation and sport community facilities and/or spaces that you regularly use in the wider district, what do you use them for, and how often?*

*How satisfied are you with the community facilities that you currently use for active recreation and sport?*

- What activity programmes, spaces, places and facilities are required to meet the various needs across the district?

*For example:*

*Thinking about wider provision of community play, active recreation and sport facilities, are there any gaps you can identify?*

*What are the three most important changes you would like to see made in the next five years to improve play, active recreation and sport provision to better meet your needs?*

# HOW TO MAKE A SUBMISSION

AND TELL US WHAT YOU THINK

It's easy really - read this document, read the supporting information and then give your feedback to us.

## HOW TO GIVE FEEDBACK

### Online:

- Social Pinpoint - an online tool for sharing information and hosting surveys:  
<https://tararuaadc.mysocialpinpoint.com.au/super>

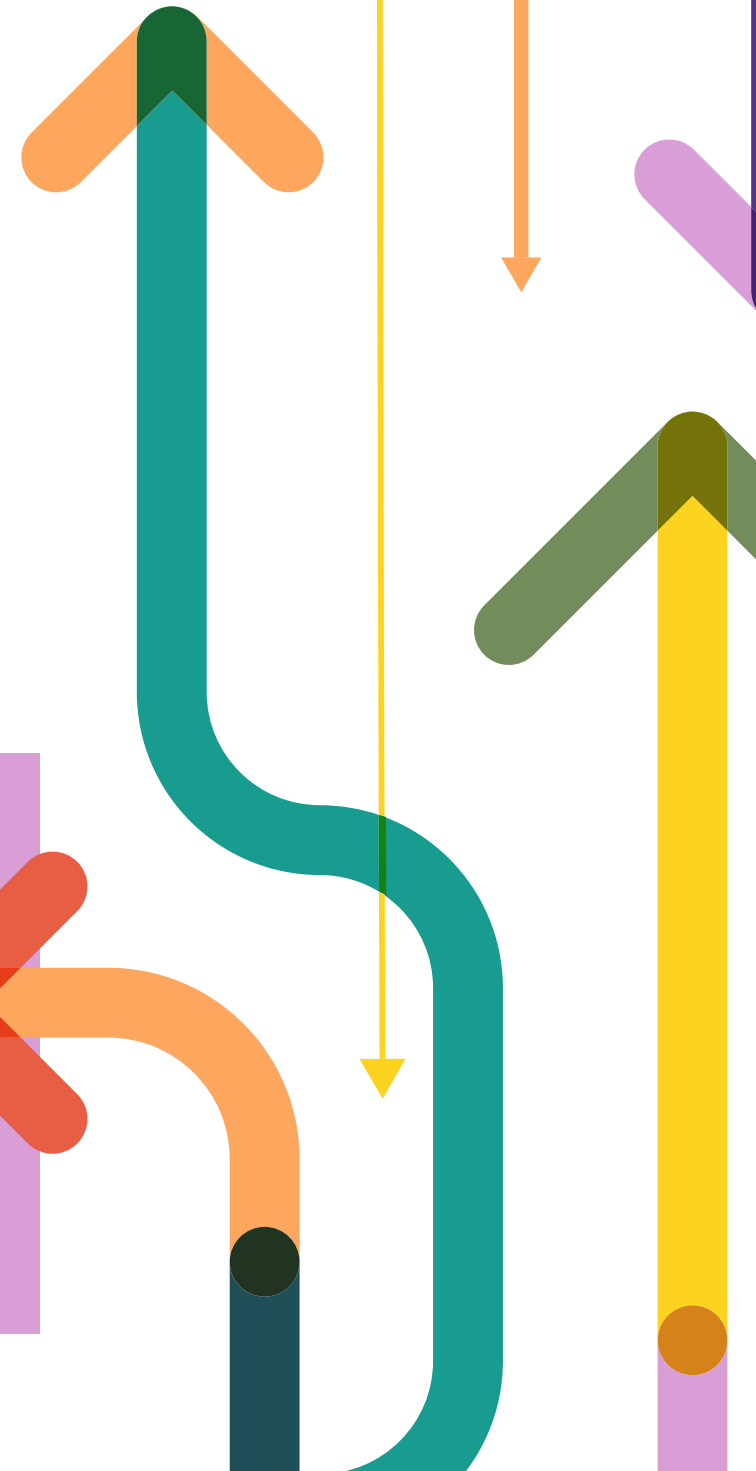
### In-person:

Come and see us in person at our Expo Events (see Page 5 for details about our Round 1 Expos).

### Offline:

- Fill in the submission form on Page 17 and send it back to us.
- Write to us using our submissions Freepost number:

*Freepost 69367  
Super Consultation Round 1  
Taranua District Council  
PO Box 115, Dannevirke*







## WHAT IS SUPPORTING INFORMATION AND WHERE CAN YOU GET A COPY

Everyone is different - some people need lots of information before they can share their views, and some people are put off by *too much* information.

For this reason, we have developed both the Consultation Document and the Supporting Information.

The supporting information is available for anyone who wants or needs more detail about the topics up for discussion.

---

### WHAT'S AVAILABLE:

- District Strategy Information Sheet
- Water Supply Bylaw Information Sheet
- Water Tanks Information Sheet

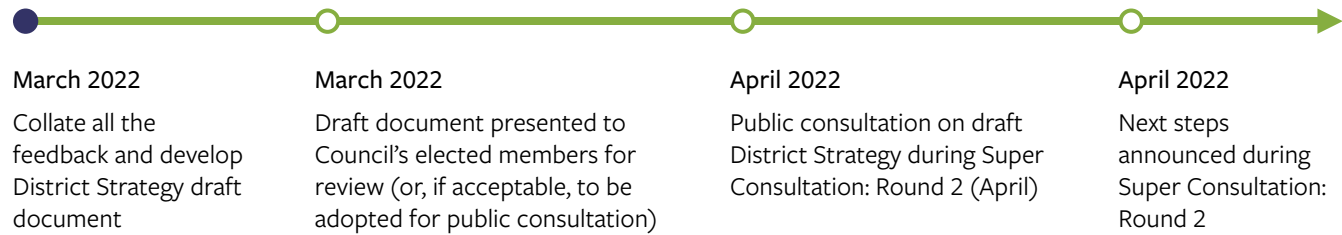
---

### WHERE CAN I GET A COPY:

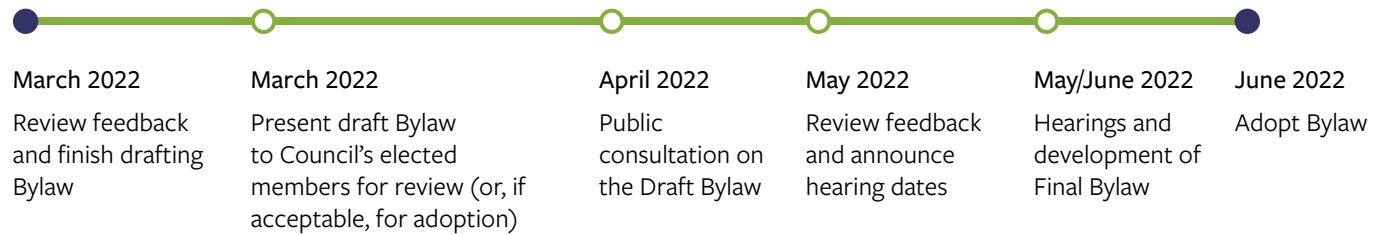
- Visit our website:  
[www.tararuadc.govt.nz/super](http://www.tararuadc.govt.nz/super)
- Call or email us and request copies:  
06 374 4080 or 06 376 0110  
[info@tararuadc.govt.nz](mailto:info@tararuadc.govt.nz)
- Collect a copy in person at an Expo event  
- see Page 5 for dates and locations.

# WHAT HAPPENS AFTER CONSULTATION CLOSES

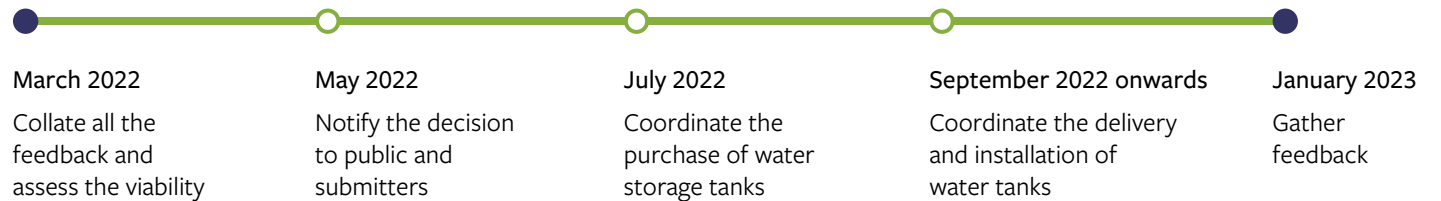
## DISTRICT STRATEGY



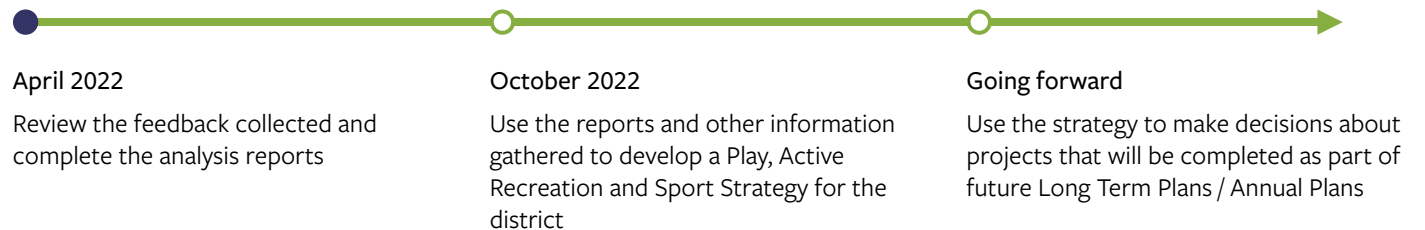
## WATER SUPPLY BYLAW PRE-CONSULTATION



## WATER TANKS



## PLAY, ACTIVE RECREATION AND SPORT STRATEGY



### What does it mean when Council "adopts" something?

In this context, adopt means to formally approve or accept (a report or suggestion).

### What's a "hearing"?

Hearings provide an opportunity for people to expand on written feedback and to discuss matters with Council's elected members in a public forum.



#2.1 WATER SUPPLY BYLAW

Lined area for writing feedback on Water Supply Bylaw.

#2.2 WATER TANKS

Lined area for writing feedback on Water Tanks.

#3 PLAY, ACTIVE RECREATION AND SPORT STRATEGY

Lined area for writing feedback on Play, Active Recreation and Sport Strategy.

FOLD HERE

FOLD HERE

Freepost 69367  
Super Consultation Round 1  
Taranua District Council  
PO Box 115, Dannevirke