

1 LAND AND WATER

WAI (WATER)

- » Water is a life giving resource and Feilding has been shaped by its actions. Although there is a risk from flooding streams, it can also present opportunities to reflect its role in our place today.
- » Work is already underway to improve Mangakino (Makino) Stream and more can be done to amplify its place in the town with improved access and habitat values.
- » Stormwater - the water that usually goes into drains when it rains - can also be more sensitively designed for in our streetscapes and open spaces, so it can be better quality when it gets into streams.

PLANTING

- » Planting has a strong effect on the character of a place and helps us to know where we are. Many of the original names for places given by Māori related to vegetation that was found there, such as Kawakawa (Feilding).
- » Our native vegetation is a taonga (treasure) and brings many benefits as it is suited to local conditions, supports native birds and insects, and connects back to natural landscapes, bringing awareness to the heritage of our town.
- » Planting of species of trees and plants which are natural to the place can be woven together with existing or other species combinations that work in an urban place.

* A Statutory Acknowledgement recognises the particular cultural, spiritual, historical, and traditional association of local iwi with the waterbody. This requires the Council to have particular regard to kaitiakitanga (stewardship) of the waterway and involve iwi in decision making.

SOMETHING TO THINK ABOUT

What if Feilding town centre better reflected its natural landscape?

Find out how to give us your thoughts via the weblink below, or by scanning the QR code.

www.mdc.govt.nz/Contact-Us/Have-Your-Say/Feilding-Town-Centre-Refresh



He Taonga te Wai

Water is a gift



The original Māori name for Feilding is Kawakawa. The area sits upon folded marine terraces that have weathered to form a broad floodplain.

Waterways weave across the once-swampy landscape, all flowing into the Manawatu.



Each waterway has its own mauri (life force), mana (integrity) and wairua (spirit). Care must be taken of these waterways as discharges of contaminated water degrade the mauri, mana and wairua of each.

healthy water *healthy people*



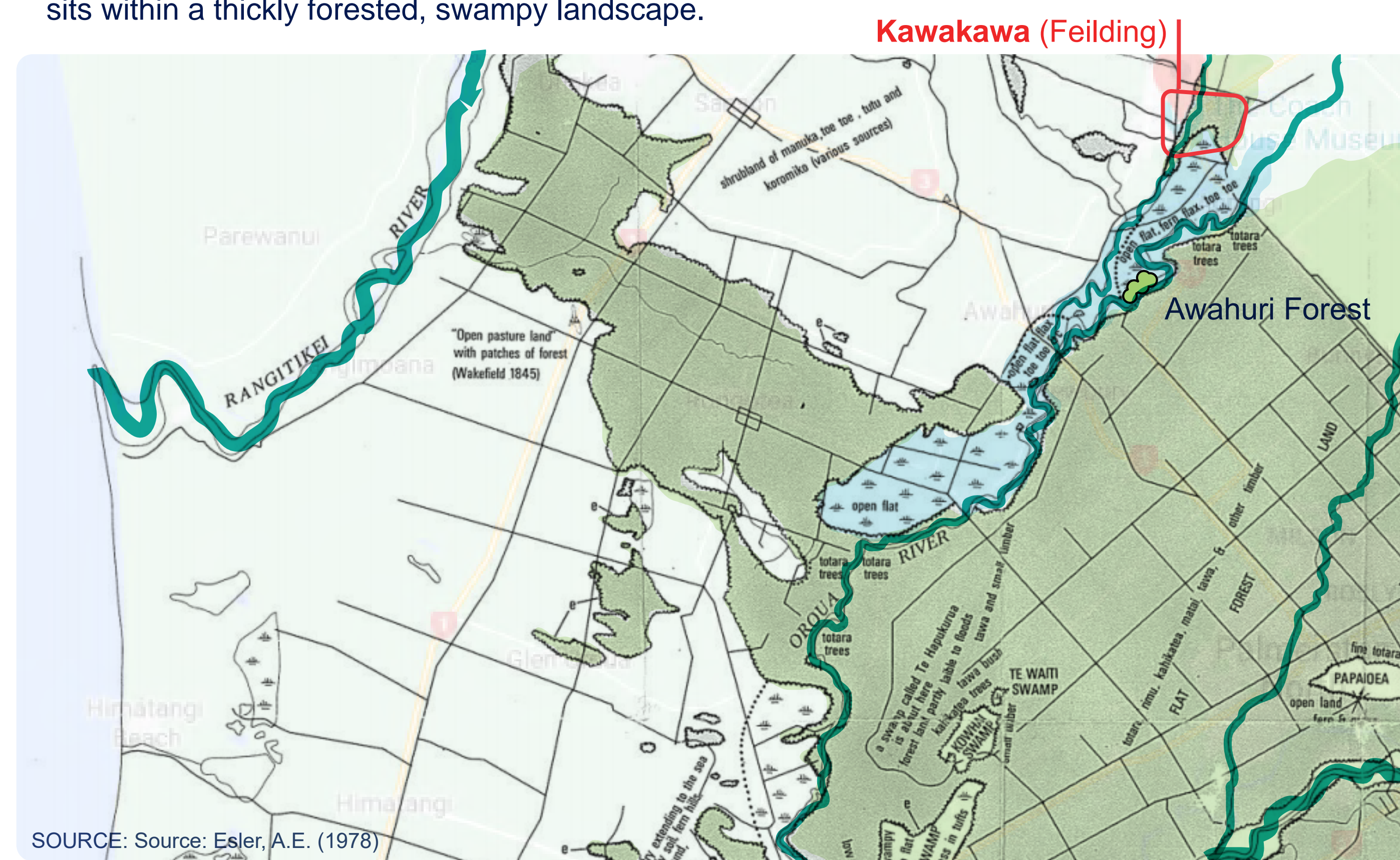
The Mangakino (Makino) Stream flows through the town centre. It has issues with water quality and is prone to high flows, which contributes to erosion and sedimentation down stream.

Work is underway to improve it, but more can be done with access, habitat improvement and work with adjoining owners on boundary treatments.

He Taonga te Taiao

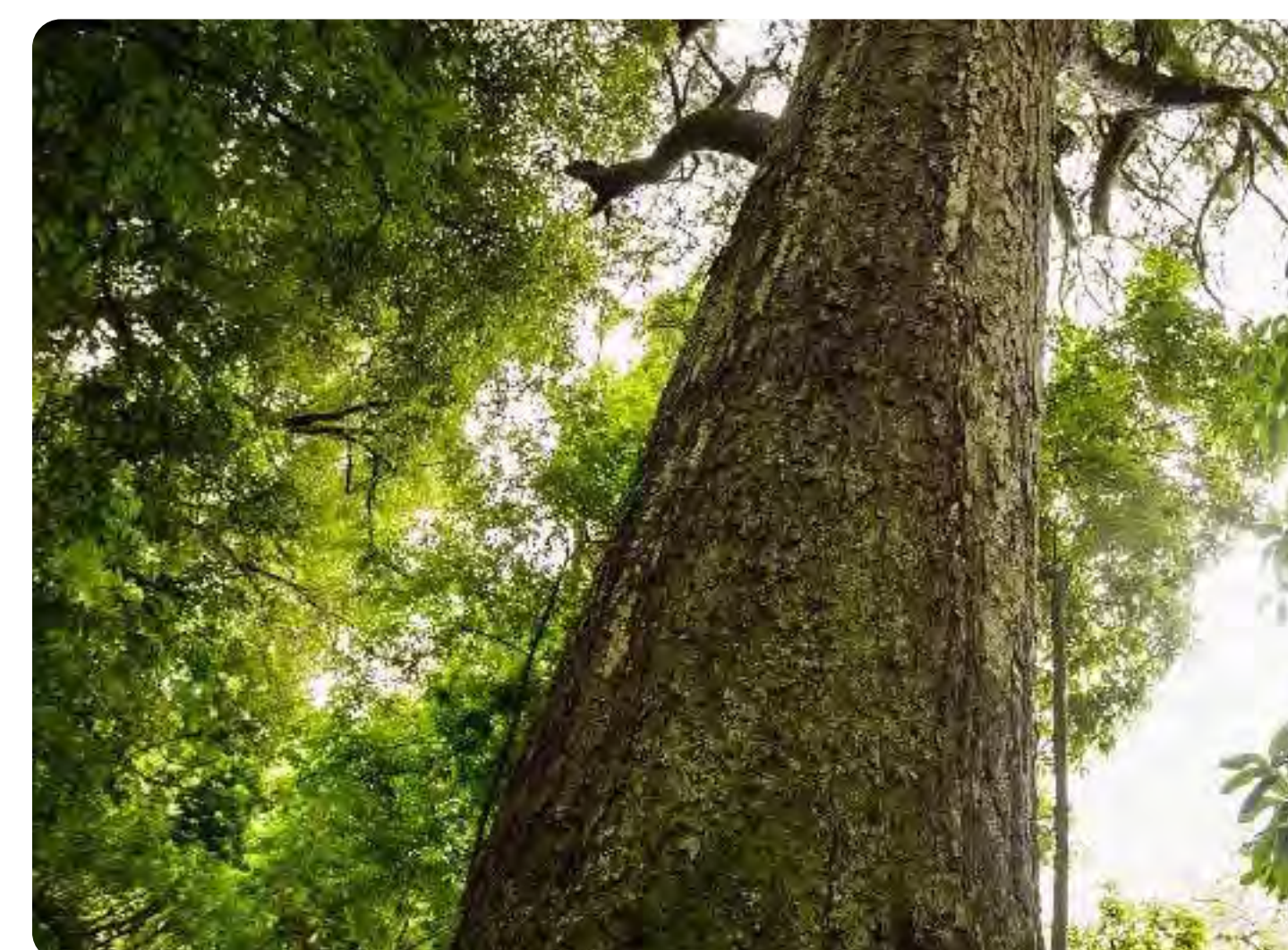
The natural environment is a treasure

When Feilding is located within a 1860 map it sits within a thickly forested, swampy landscape.



Totara, Rimu, Kahikatea, Matai and Tawa were common, while the wet areas were covered with flax, ferns and toe toe.

The forests were cleared for farming - **less than 1% remains today.**



Awahuri Forest is the last remaining lowland podocarp forest in the Manawatu - some trees are over 800-years old. The Mangakino (Makino) Stream runs from the town through the forest.



Kawakawa grew thickly in the forest understory. Leaves, bark, fruit and roots are used for rongoā (medicine) and it is popular as a tea.



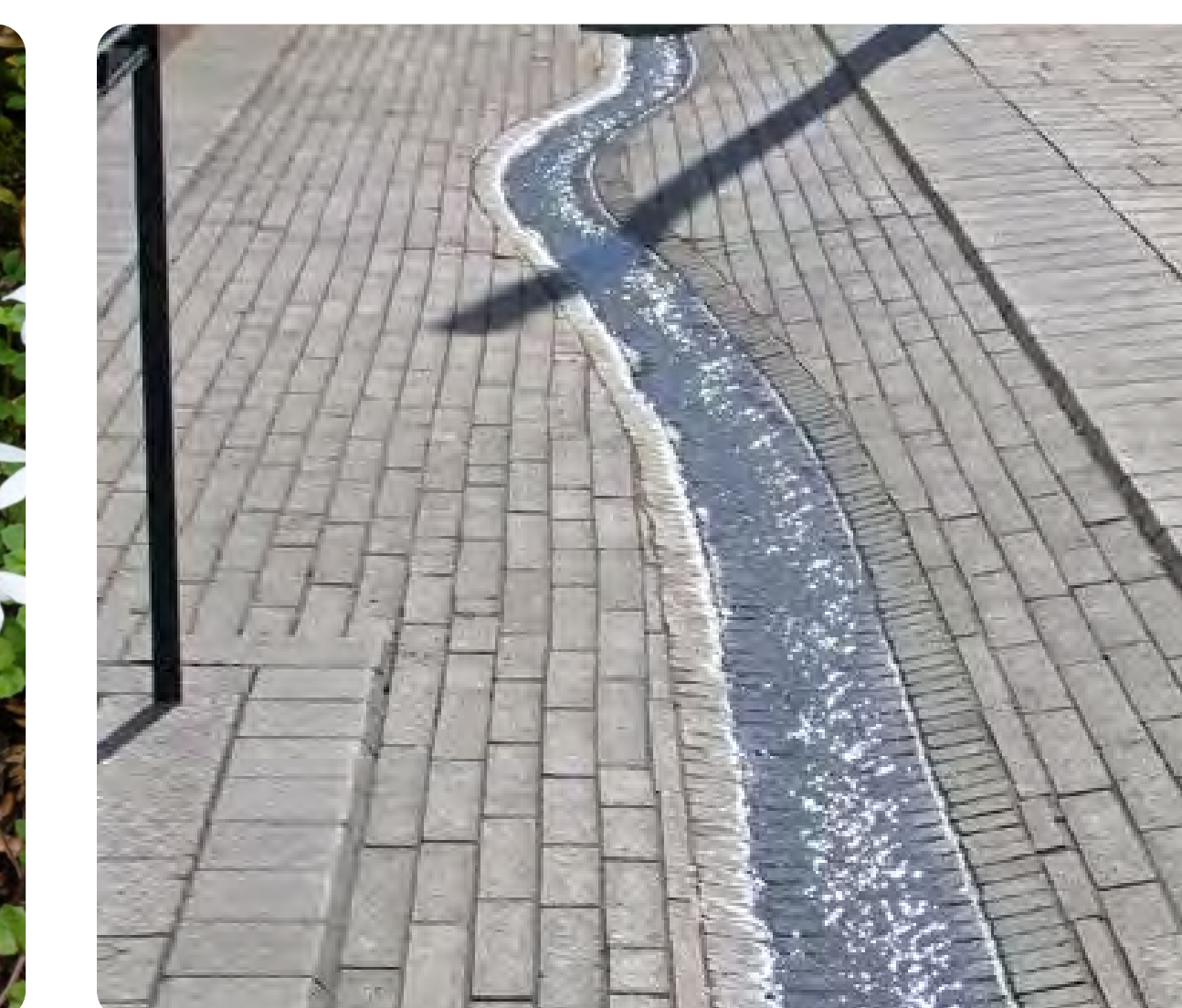
What if we brought back indigenous planting into the town centre? Native planting works well with the climate and attracts native birds. The plants can be mixed with exotics to create beautiful compositions.



Stormwater from trafficable surfaces carries heavy metals, oil, sediment and pollutants. Raingardens mimic the natural watercycle, cleaning run-off before it enters waterways. They look great - adding colour to the street.



Planting trees into the ground, rather than raised planter boxes helps to capture water from surrounding surfaces, reducing flooding and allows the tree grow to its full potential.



What if water became a feature when it rains, bringing life to urban spaces and connecting people with this precious resource?