

From: [Allie Dunn](#)
To: [REDACTED]
Subject: Response to request for information re Huxley Street Drain Pahiatua
Date: Wednesday, 11 September 2024 11:31:00 am
Attachments: [LGOIMA - Huxley Street Drain CRM.pdf](#)
[image001.png](#)
[image002.png](#)
[image003.png](#)
[image004.png](#)
[image005.png](#)
[image006.png](#)

Kia ora

I refer to your official information request dated 19 August 2024 for information regarding Huxley Street Drain, Pahiatua.

Please find attached information as follows:

- Pahiatua Scheme Spraying – The drains our contractors spray and clean as part of the maintenance programme, the frequencies and the timing of when it will be carried out.
- 2x drain reports from February and April with highlighted sections referring to the work that was done on the Pahiatua drains including Huxley Street.
- An email to the contractor about undertaking drain maintenance in the Rotary Park in March.

Our team advise that they also do adhoc inspections of the hotspots in the district when there is heavy rain forecasted, which includes the Huxley Street drain and the culvert grates in the drain. Unfortunately this inspection does not get recorded in a report since it is an adhoc activity. This is something they intend to report on in the future as a learning from this event, as the drain was inspected on the Friday 16th August before the rain event on the Sunday 18th August.

Ngā mihi



Allie Dunn | Manager - Democracy Services
Strategy & Community Wellbeing - Democracy Services |
Tararua District Council

☎ Phone: +64 6 3744080 | Mobile: +64 27 3331626

✉ Allie.Dunn@TararuaDC.govt.nz

📍 26 Gordon Street, Dannevirke 4930, PO Box 115

🌐 www.tararuaDC.govt.nz

📘 www.facebook.com/tararuaDC

From: Allie Dunn

Sent: Monday, August 26, 2024 7:58 AM

To: [REDACTED]

Subject: CM: Request for information re Huxley Street Drain Pahiatua

Kia ora

This email is to acknowledge receipt of your request for information, regarding Huxley Street Drain, Pahiatua.

We will endeavour to respond to your request as soon as possible and in any event no later than 16 September 2024, being 20 working days after the day your request was received. If we are unable to respond to your request by then, we will notify you of an extension of that timeframe.

As part of our commitment to openness and accountability, we are now proactively publishing copies of requests for information and the responses provided to these requests, on our website. In doing so, we will ensure we comply with the provisions of the Privacy Act 2020 and redact any personal / identifying information from any response published.

If you have any questions about this, please don't hesitate to get in contact with me.
Ngā mihi



Allie Dunn | Manager - Democracy Services

**Strategy & Community Wellbeing - Democracy Services |
Tararua District Council**

Phone: +64 6 3744080 | Mobile: +64 27 3331626

Allie.Dunn@Tararua.govt.nz

26 Gordon Street, Dannevirke 4930, PO Box 115

www.tararua.govt.nz

www.facebook.com/tararua.govt.nz

Service Request No 107474 has been updated/reassigned to you.

Request Details

Date Received: 19/08/2024

CRM Number: 107474

Category Description: Urban Gutter, Drain or Culvert Needs Cleaning Out

Description of Request: [REDACTED] called to request a maintenance record for the Huxley St, Pahiatua drains. She wants to know when it was last cleared out and previous records of it been maintained please. [REDACTED]

Location Details

Property Address:

Street Address: Huxley Street Pahiatua

Additional Info:

Asset:

Customer Details

Name: Anonymous Anonymous

Address:

Home Phone Number:

Work Phone Number: 06 374 4080

Mobile Phone Number:

Additional Information Entered By: Mrs C A Bryant

Urgent?: No

Nearest Crossroad or General Location - N/A

Is this an urgent request? - No

Do you require a call back? - Yes

Best way to contact you between 8am - 5pm weekdays? Phone or email (add details) -


Afterhours RFS ID - N/A

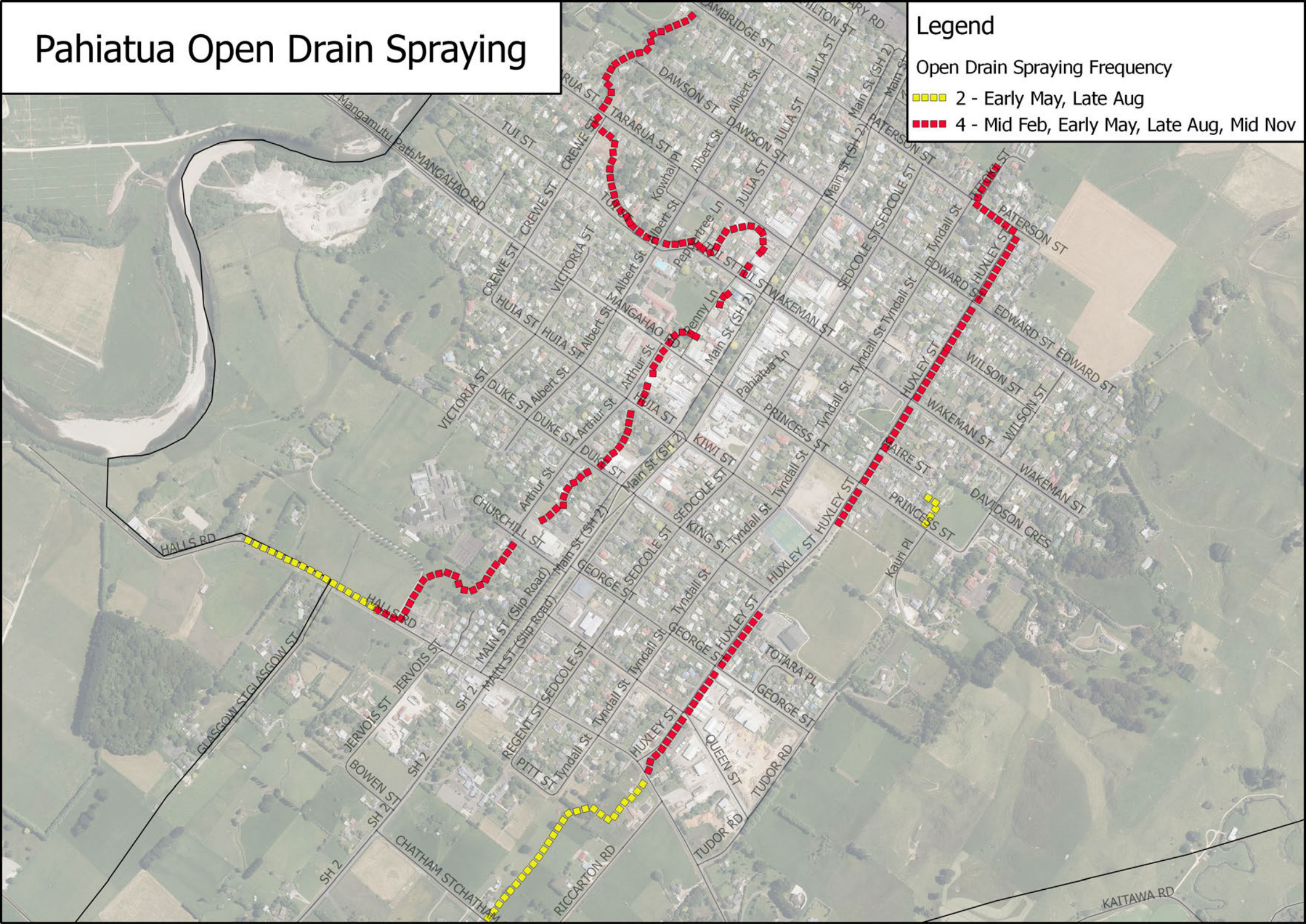
Pahiatua Open Drain Spraying

Legend

Open Drain Spraying Frequency

2 - Early May, Late Aug

4 - Mid Feb, Early May, Late Aug, Mid Nov





Date: 12th April 2024 Tararua

Alliance c/ Eddie Charlton – Utilities

Manager

Storm Drain Maintenance Report

Introduction

1. The purpose of this report is to capture the status and condition of the storm water drains before and after the maintenance work, and any critical observations regarding the state of the infrastructure as part of the Tararua District's programmed maintenance.
2. The scope of this work is intended to remedy drainage defects such as high shoulder (the lip that can form on the edge of the road preventing water to run over the road), blocked culverts, and overgrowth to ensure the asset is maintained in a safe and serviceable condition, to minimise future maintenance costs and extend the life of the asset and/or the road.
3. A notice was put out in the Bush telegraph to notify residents of spraying activities.
4. The drains completed within the first tranche of work are highlighted in blue in Annex A.

Storm Drain Maintenance

4. **Maintenance activities performed:**
 - **Clearing of drains in vicinity Woodville, Pahiatua and Eketahuna enough to establish water flow.**
 - Spraying of drains in Woodville, Pahiatua and Eketahuna.



-

- Removal of obstructions such as logs and debris from the waterways.
- Clearance of organic matter from drains, culverts and verges.
- Unblocking of culverts and grates – there was a focused emphasis on clearing culverts to increase capacity for the occurrence of future extreme weather events.

5. Schedule of maintenance activities:

- To be confirmed by Utilities Manager.

6. List of equipment used for maintenance:

- Brush cutter
- Chainsaw
- Stihl Combi Tool – trimmers and saw.
- Ratchet loppers
- Rakes
- Hand saws
- Green waste fage
- Yard broom
- Toyota Dyna truck
- Cones and barricades
- Spray PPE and spray knapsacks
- Glyphosate Spray, wetting agent and red dye

7. Issues encountered and resolutions:



Woodville (Spraying still to be completed)

- Tay St has had clearing of heavy organic matter to allow waterflow.
- Burgoyne Street has stock on privately owned property and a new fence installed along the drain,
- Richardson Street is clear of organic matter.
- Sowry Street is completely dry and appears to have been sprayed.
- Ferguson Street is still inaccessible due to private property and stock,
- Normanby Street drain has been cleared of organic matter in middle of drain to gain waterflow.
- Pollen Street cleared of the organic matter prior to spraying, and
- Grey Street has waterflow around culvert but couldn't get access onto paddock but appears to be sprayed by owner.
- Mclean St (north) owner refused clearing inside property.

Pahiatua (Spraying still to be completed)

- Titoki Street has a deep drain that is well maintained.
- Paterson Street is tidy and only required minor clearing.
- Huxley Road cleared of organic matter in center of drain.
- Halls Rd and Churchill Street drain has good water flow.
- Arthur Street has been cleared of organic matter in centre of drain.
- Duke St has been well maintained and will only require spraying in some areas.



-
- Huia Street has community gardens next to the drain way. Organic matter has been cleared to keep clear waterway.
- Mangahao Street has cleared down the middle of drain.
- Penny Lane has been cleared in the water way to establish waterflow.
- Tui St has great waterflow.
- Crewe St has had culvert ends cleared of debris and organic matter.

Eketahuna

Still being cleared and will be sprayed immediately after clearing.


Environmental Management Plan

8. Description of environmental considerations:

- Native flora and fauna present
- Cultural significance
- Water flow and down stream effects from maintenance
- Local investment or gardens linked to the drains
- Privacy of residents
- Noise factors for tool operating hours
- Public interaction
- Health and Safety considerations

9. List of potential environmental impacts of storm drain maintenance

- Glyphosate is a toxic substance and can negatively impact fauna
- Sudden increase in water flow
- Damming effects down stream
- Increased UV exposure for native fauna

- 
- Silt residue from ground disturbance
 - Removal of non-native habit for native fauna

10. Mitigation measures to minimize environmental impacts

- Safety Data sheets are strictly adhered to when applying sprays Glyphosate.
- Ensure correct PPE is used at all times
- Conduct toolbox meetings and H&S assessments prior to commencing work
- Continuous assessment on the presence of native fauna/ relocation to the wetland if appropriate
- Ensure culverts are clear at the end of each working day
- Operate machinery between 0800-1500
- Ensure paths and pedestrian access is clear

11. Description of monitoring and reporting procedures to track environmental impacts:

- Before and after photographs to track progress
- Incident and near miss reporting
- Toolbox meetings

Cultural Health Monitoring Considerations

12. Description of cultural considerations

- What native fauna is present?
- How do we protect the mauri of the environment in which we are working?
- Who needs to be consulted and when?
- Which iwi representatives do we need to engage with?

13. List of potential cultural impacts of storm drain maintenance:

- Necessary relocation of native fauna
- Discovery of bones or relics that have potential cultural significance
- Local ties



•

14. Mitigation measures to minimize cultural impacts

- Cultural health monitoring
- Iwi engagement/ consultation
- Continuous assessment throughout the project

Conclusion

15. Summary of maintenance activities and environmental and cultural considerations:

- Drains has been cleared to ensure an unobstructed flow of storm water through the intended infrastructure.
- Organic waste has been managed
- Careful considerations have been taken when interacting with native fauna and the practices of relocation, through consultation with Ngati Kahungunu, were adopted.

16. Recommendations for future maintenance and monitoring:

Prioritisation on removing large obstructions along the drains to improve water flow and mitigate any damming effects.

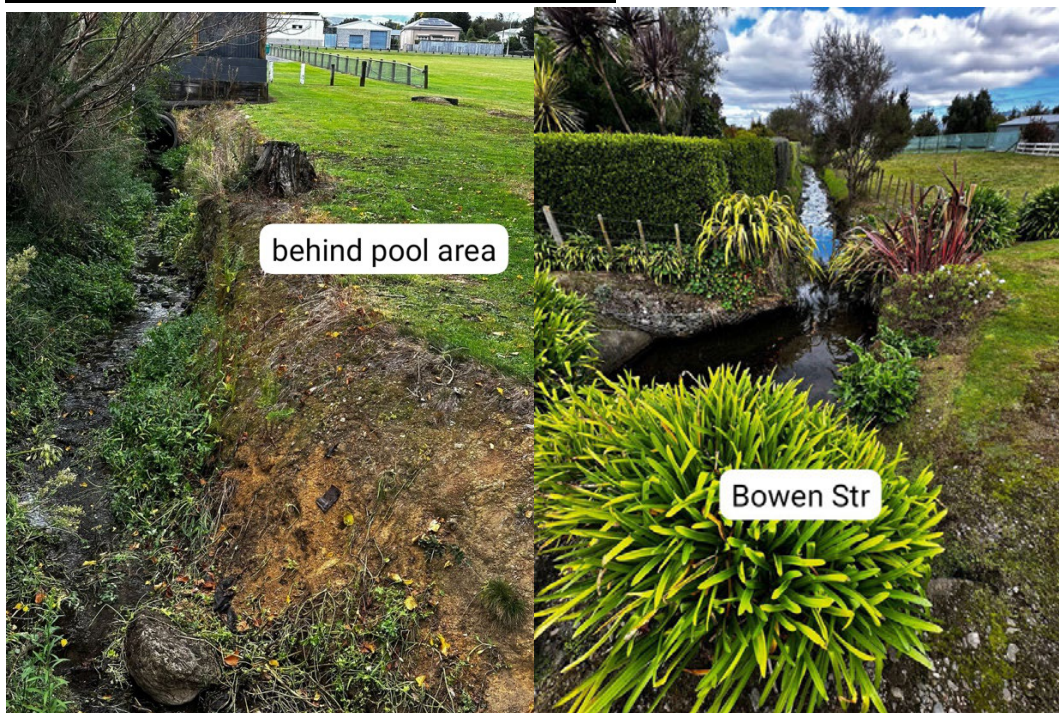
- Prioritisation of clearing areas and culverts that pose the highest risk to roading and residential infrastructure.
- Replant the drain verges with native shrubbery and grasses to restore the mauri for the native fauna, prevent growth of invasive pest species, and add an element of functional beautification to the local infrastructure.
- Conduct quarterly inspections to ensure culverts and drains remain unobstructed.

Annex A



Photographs of maintenance activities

Woodville:









•
Pahiatua:

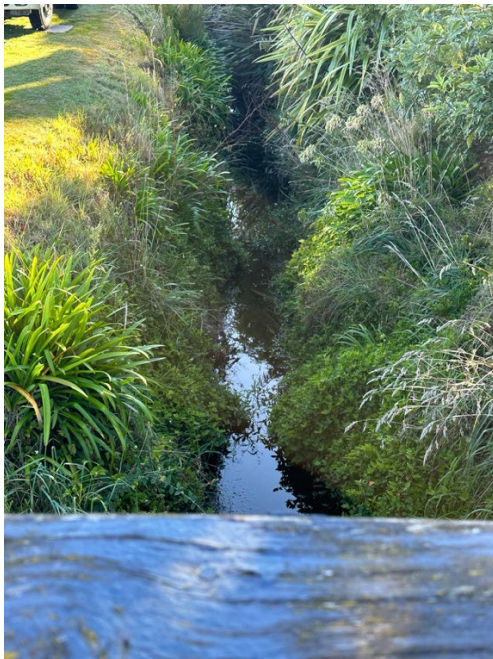
Huxley – Queen st end



Huxley St/ Princess St



Huxley St/ Edwards St





Date: 5th February 2024 Tararua

Alliance c/ Eddie Charlton – Utilities

Manager

Storm Drain Maintenance Report

Introduction

1. The purpose of this report is to capture the status and condition of the storm water drains before and after the maintenance work, and any critical observations regarding the state of the infrastructure as part of the Tararua District's programmed maintenance.
2. The scope of this work is intended to remedy drainage defects such as high shoulder (the lip that can form on the edge of the road preventing water to run over the road), blocked culverts, and overgrowth to ensure the asset is maintained in a safe and serviceable condition, to minimise future maintenance costs and extend the life of the asset and/or the road.
3. A notice was put out in the Bush telegraph to notify residents of spraying activities.
4. The drains completed within the first tranche of work are highlighted in blue in Annex A.

Storm Drain Maintenance

4. Maintenance activities performed:

- Clearing of drains in vicinity Dannevirke, Woodville, Pahiatua and Eketahuna enough to establish water flow.



- - **Spraying of drains** in Dannevirke, Woodville, **Pahiatua** and Eketahuna.
 - **Removal of obstructions** such as logs and debris from the waterways.
 - Clearance of organic matter from drains, culverts and verges.
 - Unblocking of culverts and grates – there was a focused emphasis on clearing culverts to increase capacity for the occurrence of future extreme weather events.

5. Schedule of maintenance activities:

- To be confirmed by Utilities Manager.

6. List of equipment used for maintenance:

- Brush cutter
- Chainsaw
- Stihl Combi Tool – trimmers and saw
- Ratchet loppers
- Rakes
- Hand saws
- Green waste fage
- Yard broom
- Toyota Dyna truck, x 2 Ford Ranger utes
- Cones and barricades
- Spray PPE and spray knapsacks
- Reglone spray (Diquat), wetting agent and red dye

7. Issues encountered and resolutions:

Dannevirke

- Hospital St has long grass but has clear waterflow. Has been sprayed also.
- Fraser Collins Street has locked gates still and we require access to spray.



- Otanga and Carlson Street have animals in the paddock that need to be isolated in order to spray. Animals have kept growth around drains to minimal amounts.
- Easton St has heavy amounts of vine growth. Has been sprayed and flow is established with removal of vegetation but will require a few spray treatments to slow vines down.
- All other drains have been cleared and sprayed.

Woodville

- Tay Road has had clearing of heavy organic matter to allow waterflow and spraying completed.
- Burgoyns Street has stock on privately owned property and a new fence installed along the drain,
- Richardson Street is well maintained and has been sprayed,
- Sowry Street has been sprayed,
- Ferguson Street is still inaccessible due to private property and stock,
- Normanby Street drain has been sprayed is clear of organic matter.
- Pollen Street cleared of the organic matter prior to spraying, and
- Grey Street has been sprayed and good water flow.

Pahiatua

- Titoki Street has a deep drain that is well maintained and appears to have been sprayed,
- Paterson Street is tidy and has no requirement for spray. There are also ducks nesting in this area,
- Huxley Road cleared of organic matter and has been sprayed. There are gardens along some of the verges and did not require spraying,



-
- Halls Rd and Churchill Street drain has been sprayed and has good water flow,
- Arthur Street has been cleared of organic matter and sprayed but thick build up of vegetation so will require a few more spray treatments to keep under control,
- Duke St has been well maintained and has also been sprayed,
- Huia Street has community gardens next to the drain way. With the hold over period required by Reglone, it is recommended that we do not spray this area as spray residues could affect the crops. Organic matter has been cleared to keep clear waterway,

Mangahao Street has cleared and sprayed where needed,

- Penny Lane has been cleared in the water way to establish waterflow but will require a more timely clean to clear all organic matter from growing back quickly. Penny Lane has been sprayed.
- Tui St has been sprayed and has great waterflow.
- Crewe St has been sprayed and had culvert ends cleared of debris and organic matter.

Eketahuna

- Stanley St from Septimus St down to Turner St, has been sprayed. Long grass at time of spraying but waterway was still clear of organic matter.
- Drummond st was well maintained by owner and didn't require any clearing or spraying.
- Stout St has been sprayed. Also, long grass but waterflow is still good.
- Halswell St had culvert ends cleared and sprayed along drains.



- Bengston St had stock in paddock so no spraying undertaken, but drains were clear.
- Bengston St/ Newman Rd has had culvert ends cleared of debris and organic matter. Has been spot sprayed in areas needed.
- Alfredton Rd has long grass in the paddocks. Waterflow is still good and has had verges sprayed.

Environmental Management Plan

8. Description of environmental considerations:

- Native flora and fauna present
- Cultural significance
- Water flow and down stream effects from maintenance
- Local investment or gardens linked to the drains
- Privacy of residents
- Noise factors for tool operating hours
- Public interaction
- Health and Safety considerations

9. List of potential environmental impacts of storm drain maintenance

- Reglone is a toxic substance and can negatively impact fauna
- Sudden increase in water flow
- Damming effects down stream
- Increased UV exposure for native fauna
- Silt residue from ground disturbance
- Removal of non-native habit for native fauna

10. Mitigation measures to minimize environmental impacts

- Safety Data sheets are strictly adhered to when applying sprays (Reglone (Diquat) is one of the only herbicides approved by the Department of Conservation for use in aquatic environments).
- Ensure correct PPE is used at all times
- Conduct toolbox meetings and H&S assessments prior to commencing work



-
- Continuous assessment on the presence of native fauna/ relocation to the wetland if appropriate
- Ensure culverts are clear at the end of each working day
- Operate machinery between 0800-1500
- Ensure paths and pedestrian access is clear

11. Description of monitoring and reporting procedures to track environmental impacts:

- Before and after photographs to track progress
- Incident and near miss reporting
- Toolbox meetings

Cultural Health Monitoring Considerations

12. Description of cultural considerations

- What native fauna is present?
- How do we protect the mauri of the environment in which we are working?
- Who needs to be consulted and when?
- Which iwi representatives do we need to engage with?

13. List of potential cultural impacts of storm drain maintenance:

- Necessary relocation of native fauna
- Discovery of bones or relics that have potential cultural significance
- Local ties

14. Mitigation measures to minimize cultural impacts

- Cultural health monitoring
- Iwi engagement/ consultation
- Continuous assessment throughout the project



Conclusion

15. Summary of maintenance activities and environmental and cultural considerations:

- Drains has been cleared to ensure an unobstructed flow of storm water through the intended infrastructure.
- Organic waste has been managed
- Careful considerations have been taken when interacting with native fauna and the practices of relocation, through consultation with Ngati Kahungunu, were adopted.

16. Recommendations for future maintenance and monitoring:

Prioritisation on removing large obstructions along the drains to improve water flow and mitigate any damming effects.

- Prioritisation of clearing areas and culverts that pose the highest risk to roading and residential infrastructure.
- Replant the drain verges with native shrubbery and grasses to restore the mauri for the native fauna, prevent growth of invasive pest species, and add an element of functional beautifucation to the local infrastructure.
- Conduct quarterly inspections to ensure culverts and drains remain unobstructed.



•
Annex A

Photographs of maintenance activities

Woodville:

Normanby St



Bowen St



Richardson St



Grant St





Pahiatua:

Huxley St



Dawson St



Tui St



Penny Ln



Huxley St/ Queen St



Halls Rd

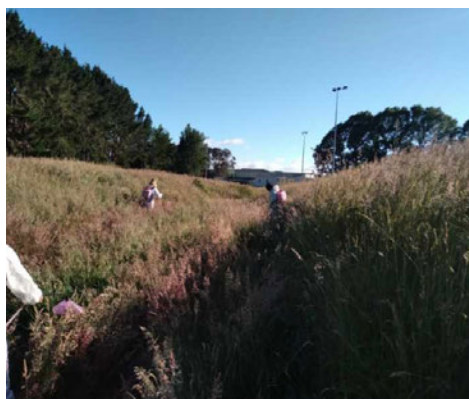


Eketahuna:

Stout St.



Alfredton St



Stanley St (Septimus – Turner)



From: [Steve Twomey](#)
To: info@carbonenvironmental.co.nz
Cc: [Eddie Charlton](#)
Subject: RE: Pahiatua stormwater drain
Date: Monday, 18 March 2024 10:43:53 am
Attachments: [image002.png](#)
[image004.png](#)

Hi Matt,

I've been asked by the Facilities team if we can do the open drains in the park as well. We are just wanting a general tidy up in the drain and light trim with the overhanging trees. I have attached some photos. Any problems just give me a call.

Cheers.

Steve Twomey
Supervisor
New Zealand



M | +64277065274
E | Steve.Twomey@tararuaalliance.co.nz

9 Oringi Road
Dannevirke 4972



Think before you print

From: Steve Twomey
Sent: Thursday, March 14, 2024 11:50 AM
To: info@carbonenvironmental.co.nz
Cc: Eddie Charlton <Eddie.Charlton@tararuaalliance.co.nz>
Subject: Pahiatua stormwater drain

Hi Matt,

I was wondering if you would be interested in clearing out a section of stormwater drain in Pahiatua. Plan attached. This drain runs along the back of houses approximately 140 meters. This drain starts at Laws Rd and goes through Rotary Park to Huxley Street drain. The drain that is in Rotary Park is looked after by parks and reserves so this section doesn't need to be done only the drain running through the back of houses need doing. Looking forward to your response.

Cheers.

Steve Twomey
Supervisor
New Zealand



M | +64277065274

E | Steve.Twomey@tararuaalliance.co.nz

9 Oringi Road
Dannevirke 4972



Think before you print







TRIM ALONG

