

Cheltenham Community

Plan

December 2017



Contents

Cheltenham 'Back in the Day'.....Page 03
Community Planning Day.....Page 04
The things we like about Cheltenham.....Page 05
Vision Statement.....Page 06

Directions Towards Improvement.....Page 07
1. Community Recreational Areas.....Page 08
2. Infrastructure.....Page 09
3. Future Growth.....Page 10





Above: A selection of images from the Cheltenham Community Planning Day.

Cheltenham 'Back in the Day'

Cheltenham is believed to have been named by one of its early and most prominent settlers, Mr. William Mills who emigrated from the Cheltenham district in England. As documented in the Cheltenham School 50 year Jubilee book, there were two early difficulties faced by the settlers of Cheltenham. The first were the poor roads - any travel to the north would have to follow the banks of the Oroua River, and once Kimbolton Road began to be extended to the north, it took much longer than initially thought due to muddier than expected conditions. The second issue were the Mosquitoes! While Mosquitoes were known to be a problem in many new settlements, it seemed the Cheltenham area was home to a higher than normal number of the pesky insects.



Above: An aerial image of Cheltenham, April 1952

Cheltenham School was established in April 1886 inside a home on Kimbolton Road. The Head Teacher was Mr. R.C. Templer who would teach at Kiwitea in the mornings and in Cheltenham in the afternoons. A purpose built school building was promptly built on Cheltenham Cross Roads and the students began learning here from February 1887. In those days the most common excuse for low attendance was put down to a high number of bush fires in the area, meaning students were either kept at home to help with the clean up, or were literally cut off from getting to school.



Left: Cheltenham School holding its Unfurling of the flag ceremony, November 1900

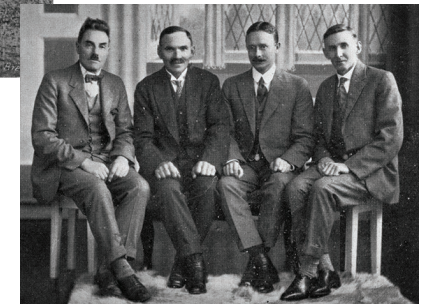


Right: An aerial image of Cheltenham School, November 1980

The Cheltenham Dairy Company was established in 1893 and the first chairman of the company was Mr. Frank Spencer. The building was completed on schedule and ready for its first delivery of milk on October 26th, 1893. In July 1912 it was reported in the Manawatu Times that the Cheltenham Dairy Company had manufactured 412,126 lbs (186,937 kg) of butter in the year just closed, which was an increase of 8.2% on the year previous and that the forthcoming year had even better prospects!



Left: The Cheltenham Dairy Company original building, Circa 1894



Right: Four of the Cheltenham Dairy Company Managers.
J. Murray (1904- 1912)
J. Young (1912 - 1919)
D. Hull (1919 - 1926)
J.M. McDonald (1926 - 1943)

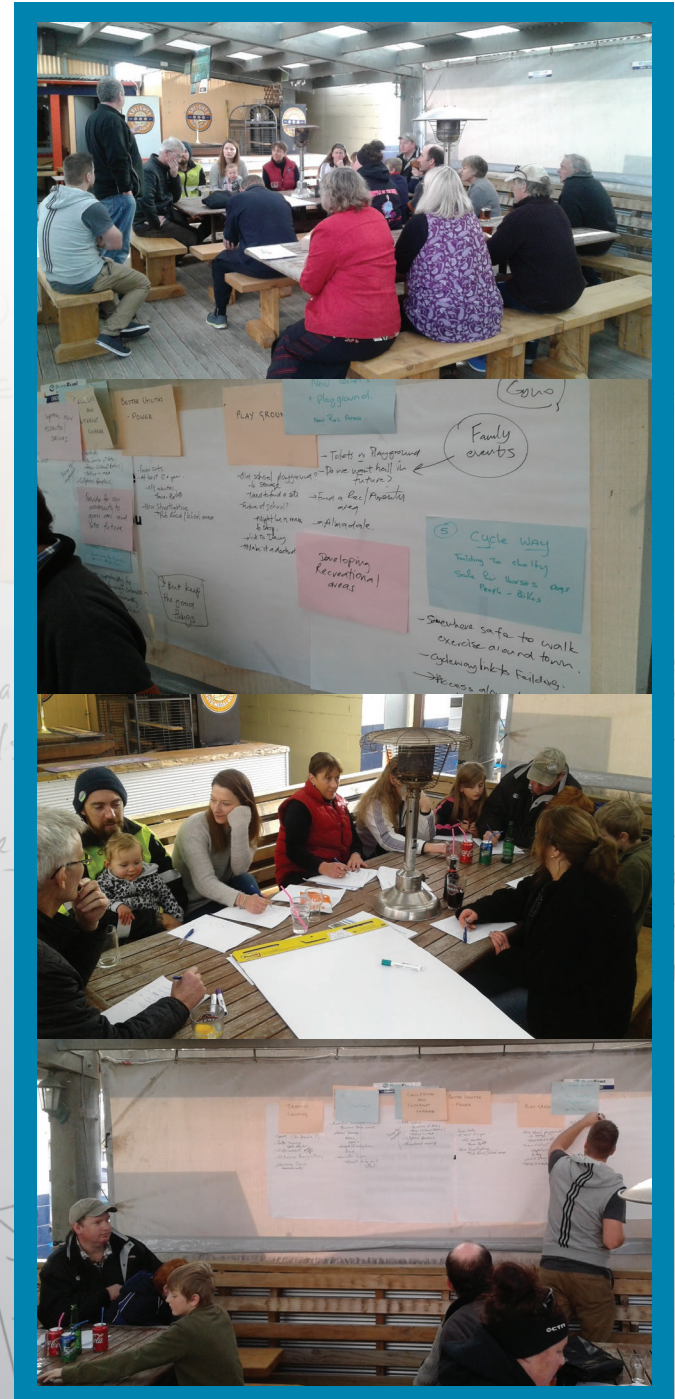
Community Planning Day

The Cheltenham Community Planning meeting was held at 'The Chelty' on Sunday 9th July 2017. The turn-out was good, with 20 community members attending the meeting. The 20 attendees were made up of a diverse range of people - there were young families who had brought their children along, residents who have just recently made the village their home and also people who have called Cheltenham home for the majority of their lives. Such a range of people made for healthy discussion, which covered a lot of different view points and opinions.

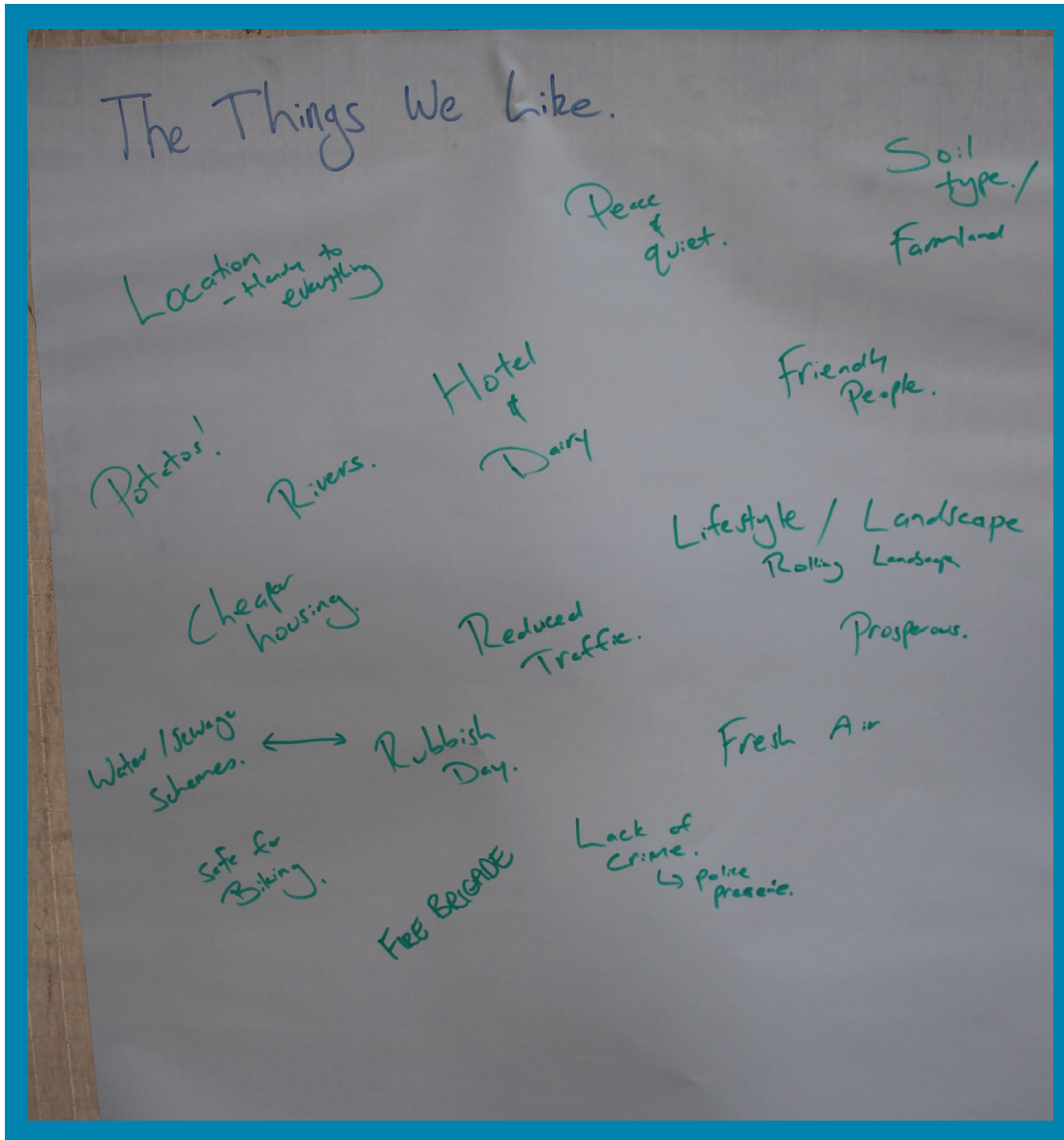
The meeting began with a whole group brainstorm of the things people like about living at Cheltenham. These ideas were then discussed and can be found on the next page of this plan.

From here, each individual listed 10 improvements they would like to see in and around Cheltenham to make the village an even better place to live. The attendees were then split into two groups for the next step in the workshop style session. Every member of the group put their individual improvement suggestions forward and then each group discussed these suggestions and came up with their collective five top things they would like to see improved for the future of Cheltenham. Next, we discussed as a collective group what the ideas were and brainstormed how we could achieve these goals.

After the meeting a delicious BBQ was put on by our hosts, David and Pauline for everyone to enjoy.



The things we like about Cheltenham



Vision Statement

“Cheltenham is a well serviced and family friendly community that is an appealing option for growth into the future”

Directions Towards Improvement

Below are the three themes that were identified at the Cheltenham Community Planning Day that the community expect will help them work towards their vision statement. Each theme has a list of ideas and actions that the Cheltenham Community can undertake and refer back to with the vision of working towards achieving the concept.

1. Community Recreational Areas

Develop and Maintain Community Recreational Areas

2. Infrastructure

Improve our Essential Services and Infrastructure

3. Future Growth

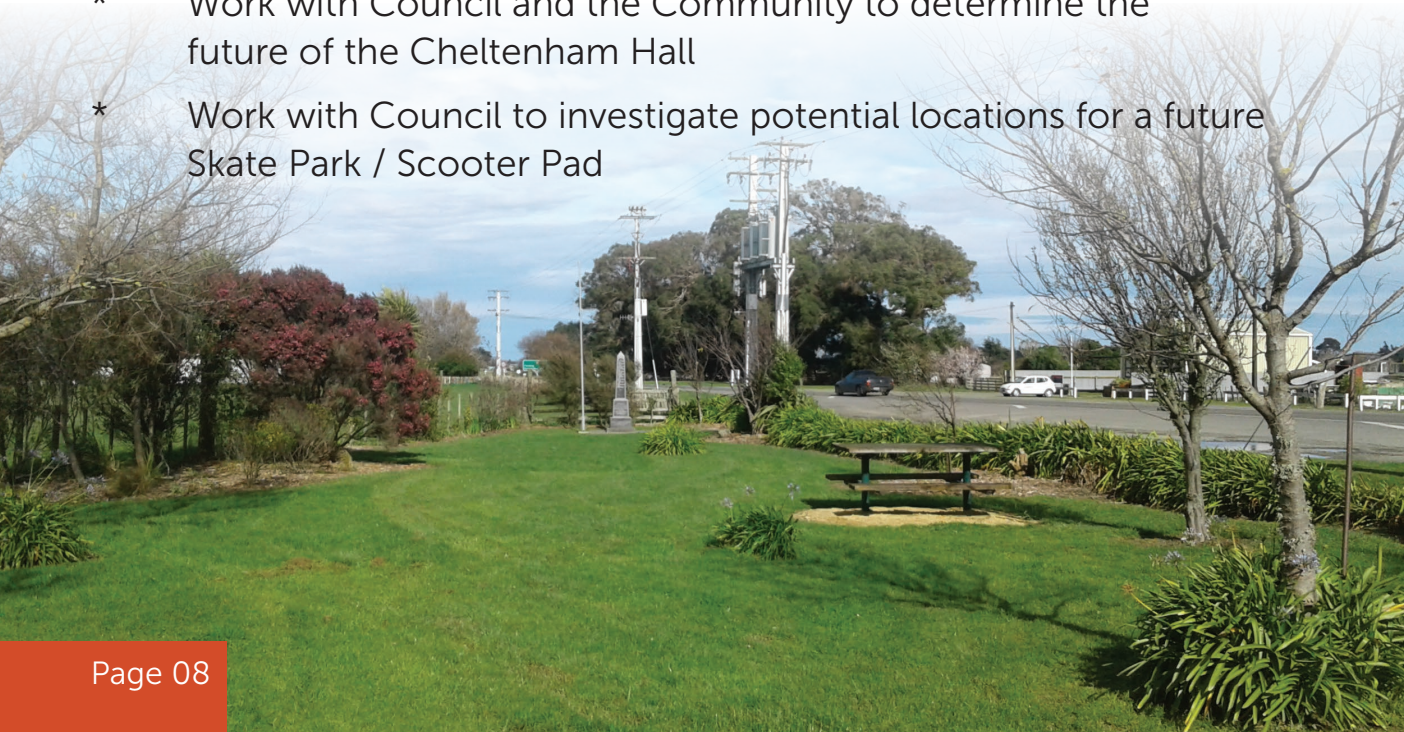
Make Provisions for the Future Growth of Cheltenham



1. Community Recreational Areas

Develop and Maintain Community Recreational Areas

- * Investigate the possibility of a Cycleway / Walkway from Cheltenham to Feilding
- * Continue to develop Almadale Reserve in conjunction with Council
- * Work with Council to develop options for the Memorial Reserve as a 'Community Square' for Cheltenham, including locations for:
 - Old Cheltenham School Playground
 - New Public Toilets
- * Work with Council and the Community to determine the future of the Cheltenham Hall
- * Work with Council to investigate potential locations for a future Skate Park / Scooter Pad



2. Infrastructure

Improve our Essential Services and Infrastructure

- * Investigate opportunities for improving both cellphone coverage and internet connection
- * Work with Council to find solutions to drainage issues in Cheltenham - with Locals to get involved in this process
- * Work with power supplier to investigate on-going power cuts with the aim of reducing outages
- * Work with Council to develop new and better signage at the villages entrances
- * Work with Council to identify areas of Cheltenham which require better street lighting
- * Work with Council to investigate appropriate locations for a new recycling centre
- * Work with Council to identify appropriate areas for gardens and Gateway Thresholds
- * Work with Council and NZTA to find a solution to speeding traffic passing through Cheltenham, such as:
 - Painted 'Judder' bars
 - Better signage to influence drivers to slow down



3. Future Growth

Make provisions for the Future Growth of Cheltenham

- * Work with Council to make amendments to the District Plan to allow for new development
- * Do some initial work as a community to find out levels of potential interest from land owners regarding subdividing their land for growth
- * Work as a Community on ideas to promote Cheltenham as an appealing option to attract new residents
- * Work as a Community to build on Community Activities with the goal of drawing people to Cheltenham
- * Community Committee to organise additional Community days and events

Provide for our community to grow now and into future.

District Plan issues

Should have the choice - grow in 30yrs Time.

- want opportunity to grow through subdivision as a community.
- Keeping Cheltenham alive.



**Cheltenham
Community
Plan**

