





## Document Quality Assurance

**Bibliographic reference for citation:**

Boffa Miskell, 2014. Pohangina Community Action Plan. Report by Boffa Miskell Limited for the Pohangina Community and Manawatu District Council.

This document includes photographs and images supplied by members of the Pohangina Valley community, Manawatu District Council and Destination Manawatu.

Prepared by:	Marc Tomes Principal Boffa Miskell Ltd	
Reviewed by:	Janine Hawthorn Community Development Adviser Manawatu District Council	
Status: Final	Revision / version: 5	Issue date: 5 August 2021

File ref: U:\2013\W13028\_MTO\_MDC\_PohanginaCommunityPlan\Graphics\W13028\_006\_community\_plan.indd

© Boffa Miskell Limited 2014



# Contents

- 1. Foreword ..... 2
- 2. The community planning process ..... 4
- 3. The emerging opportunities ..... 6
- 4. Our community Vision Statement ..... 8
- 5. Recommended strategic projects..... 9
- 6. Areas of focus and Action Plans ..... 10
- 7. Next Steps ..... 20



# 1. Foreword

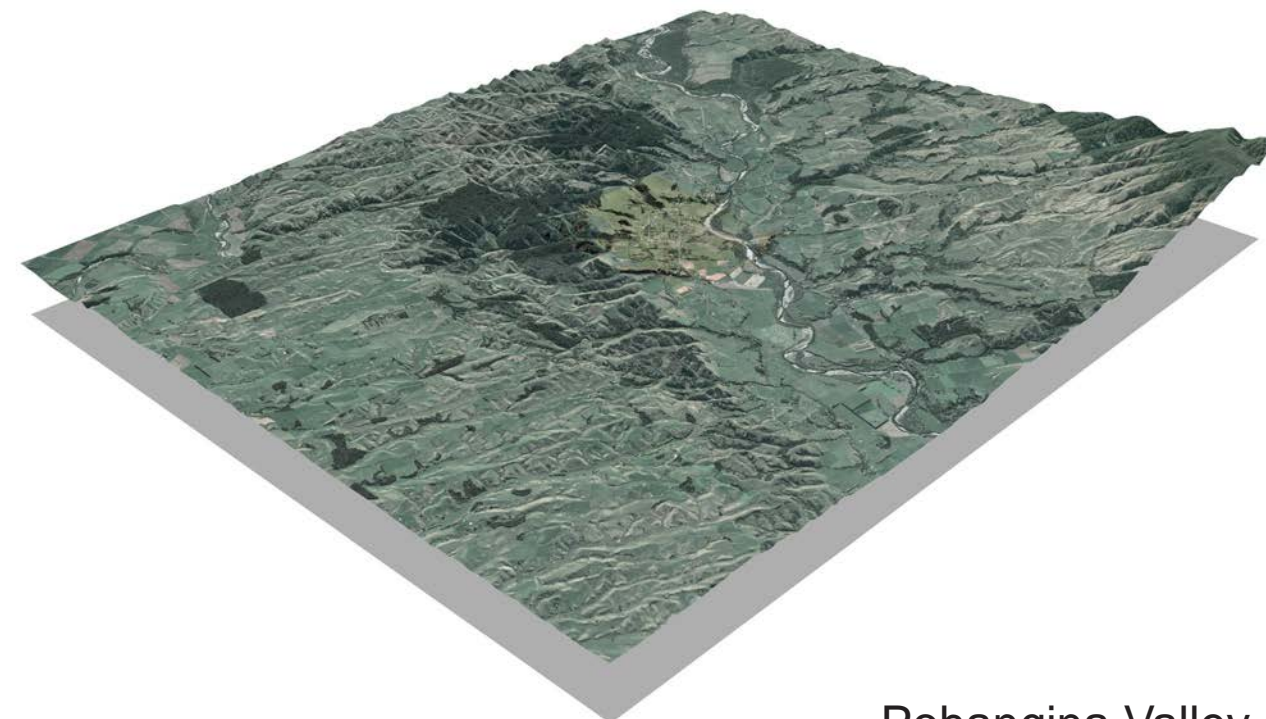
This community action plan represents a summary of outcomes from a series of community planning workshops and meetings that occurred from August 2013 through to February 2014. This document has been compiled by Boffa Miskell Ltd on behalf of Manawatu District Council (MDC) and the community of the Pohangina Valley. The observations, ideas and opportunities identified in this plan are intended to provide an over arching and holistic summary of the community's vision and identify specific projects and actions that help deliver this.

The shared community vision in this document has been developed by members of the Pohangina community and builds on the work already underway through Project Pohangina and the Pohangina Valley Community Committee (PVCC). This document also outlines the process used to establish the community vision and illustrates some of the observations, constraints and opportunities for Pohangina Valley.

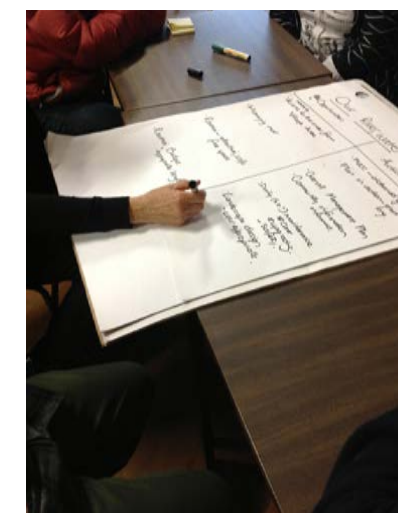
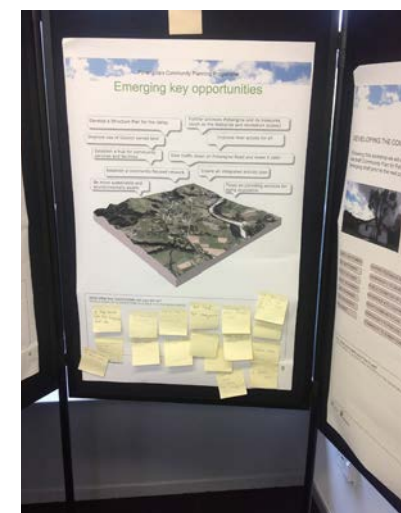
This community action plan makes recommendations for three specific strategic projects that will help deliver the shared community vision and work towards outcomes already identified in Project Pohangina.

To help articulate the themes that arose throughout the community planning process, four over arching areas (or themes) have been identified that tie back to the community vision statement. A list of specific actions have been compiled under each of these areas of focus.

This document is intended to be a 'living document' with actions being reviewed and updated on a regular basis. The intent of the document is to be 'action focussed', whilst reflecting the strategic and shared community aspirations for Pohangina Valley.

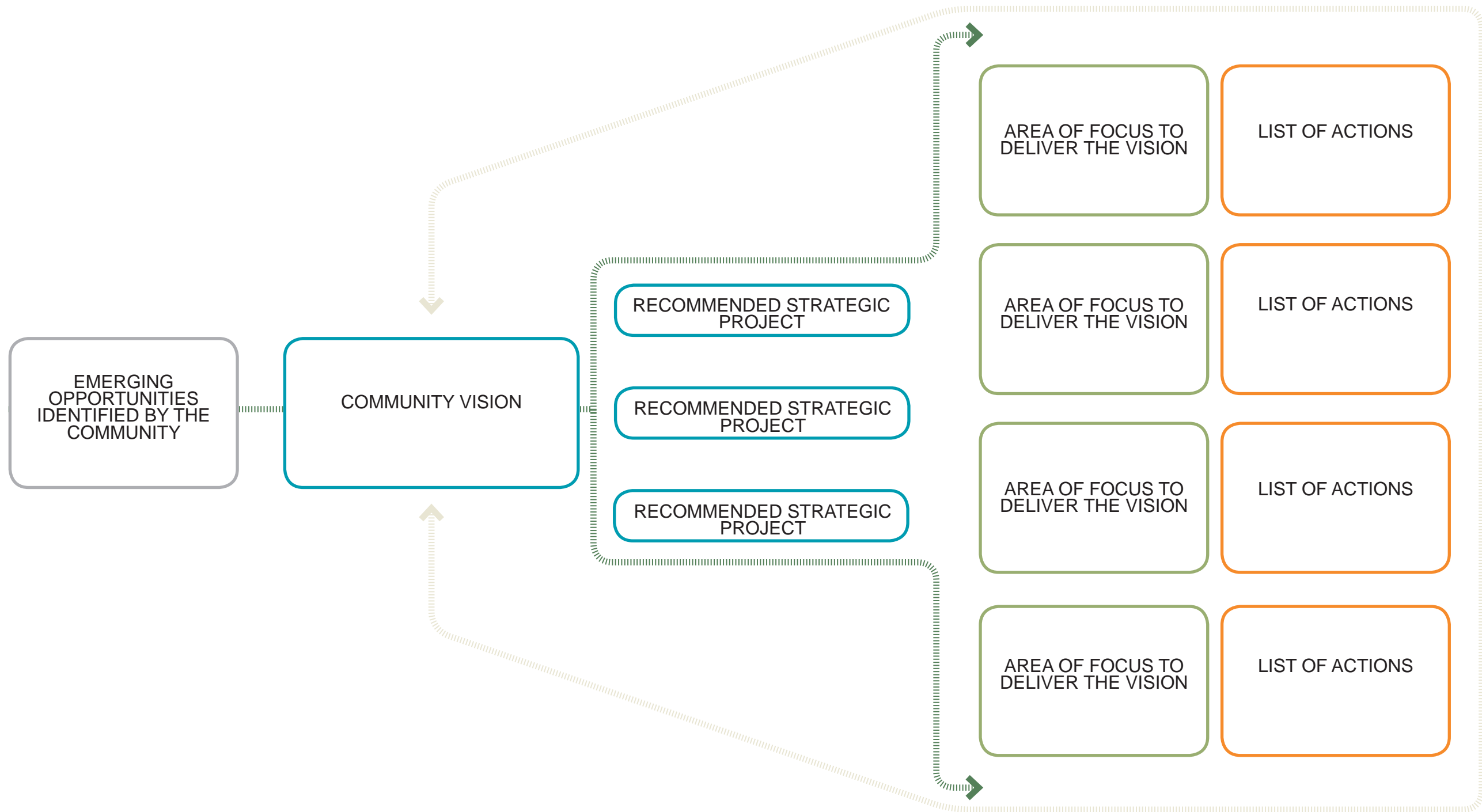


Pohangina Valley



Photos taken of Pohangina's community planning workshops and exhibitions

What you'll find in this document:



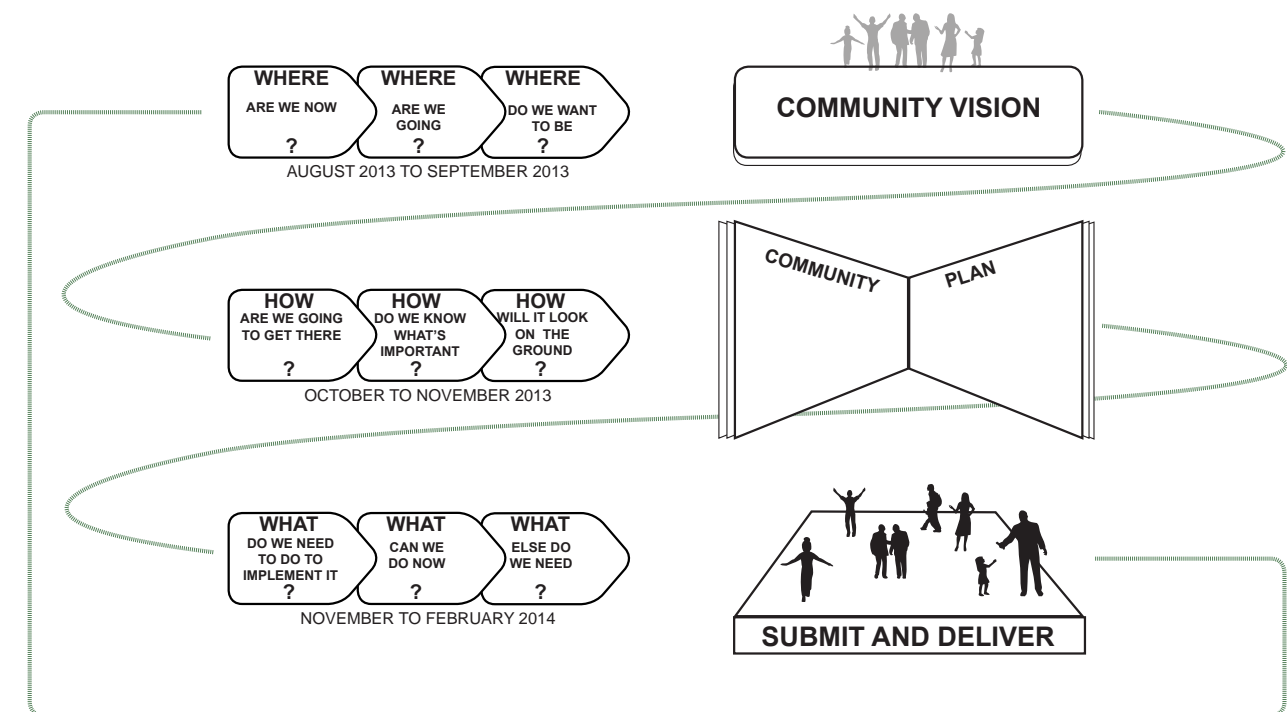
## 2. The community planning process

Pohangina's Community Planning programme has been ongoing since August 2013. A number of community workshops facilitated by Manawatu District Council were held in the community hall and County Fayre. The programme also included a series of public exhibitions and events.

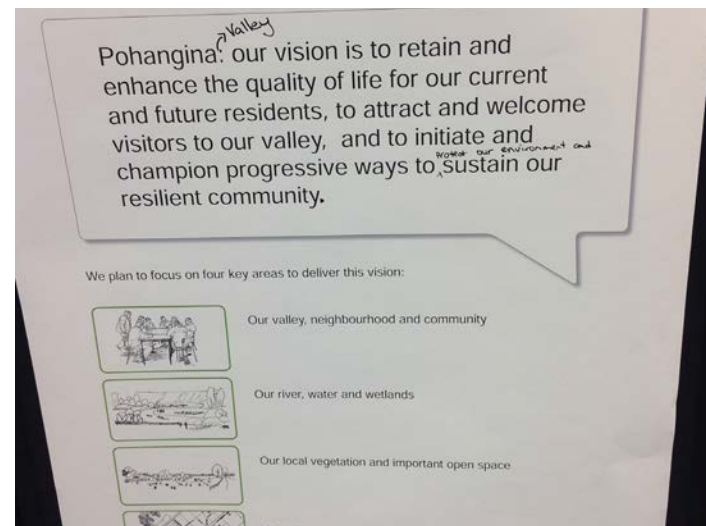
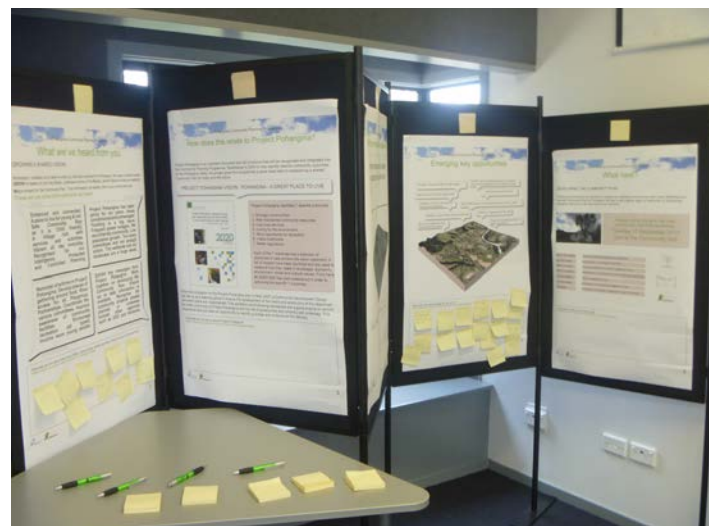
The workshops were focussed on establishing a shared vision for what the community want the village and valley to be in the future. Current issues and constraints were discussed as well a focus on opportunities for improvements. This information has informed what's presented in this document.

This Community Action Plan is intended to summarise the vision and aspirations the community have for Pohangina village and valley. It also provides a list of actions that the community feel are important to them. Some of the actions identified may be easy to deliver, others are more challenging and may take some time.

This Community Action Plan and the list of preferred actions will be submitted to Manawatu District Council to help them identify projects that could be included in their future workplans (Annual Plan and Long Term Plan).



Community Planning Process



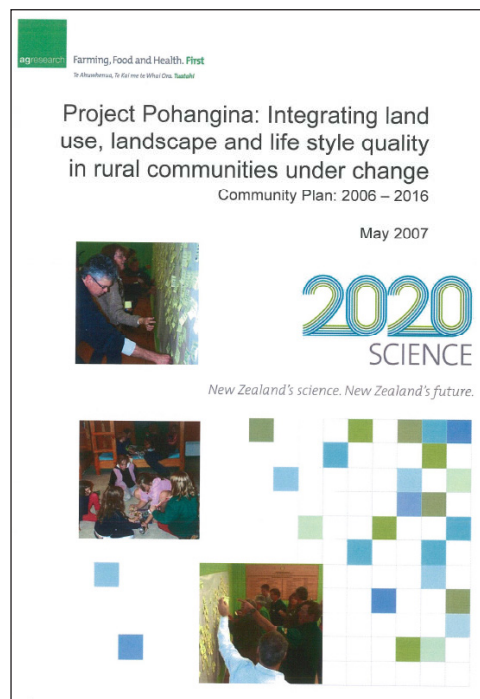


## Utilising and continuing to deliver Project Pohangina

Project Pohangina is an important project for the community and the environment of the Pohangina Valley. It has been underway since 2004. This Community Action Plan complements and delivers on a number of the desired outcomes identified in the Project Pohangina Plan.

### Project Pohangina's vision statement:

**POHANGINA - A GREAT PLACE TO LIVE**



Project Pohangina identifies 7 desired outcomes:

- 1: Stronger communities
- 2: Well maintained community resources
- 3: Improved services
- 4: Caring for the environment
- 5: More opportunity for recreation
- 6: Viable livelihoods
- 7: Better regulations

Each of the 7 outcomes has a selection of objectives to help achieve the vision statement. A list of impacts have been identified and are used to measure how they relate to landscape, economic, environment, social and cultural values. From here an action plan has been established in order to achieving the specific 7 outcomes.

Through Project Pohangina and the Pohangina Valley Community Committee (PVCC) there are a number of projects that are currently underway. These projects will continue and form part of this Community Action Plan.

### Current projects underway include:

#### **River Access:**

A series of negotiations and a successful funding application to the Walkways Commission is underway to provide walking access to the river from Pohangina Village.

#### **Valley Road Lookout Restoration:**

An action group including community members, Lions and MDC have been involved in the clearing, planting and development of infrastructure of the lookout.

#### **Singage:**

An action group has been working with Destination Manawatu to update and coordinate signage in the valley.

#### **Howell's Gully Upgrade:**

The PVCC have written a submission to MDC detailing how this year's scheduled upgrade of this dangerous stretch of Pohangina Road could benefit the community future users.

#### **Restoration of the Pohangina Domain and Sports Ground:**

Action groups have been involved in negotiations with MDC on how best to manage the Domain for the benefit of the community.

### 3. The emerging opportunities

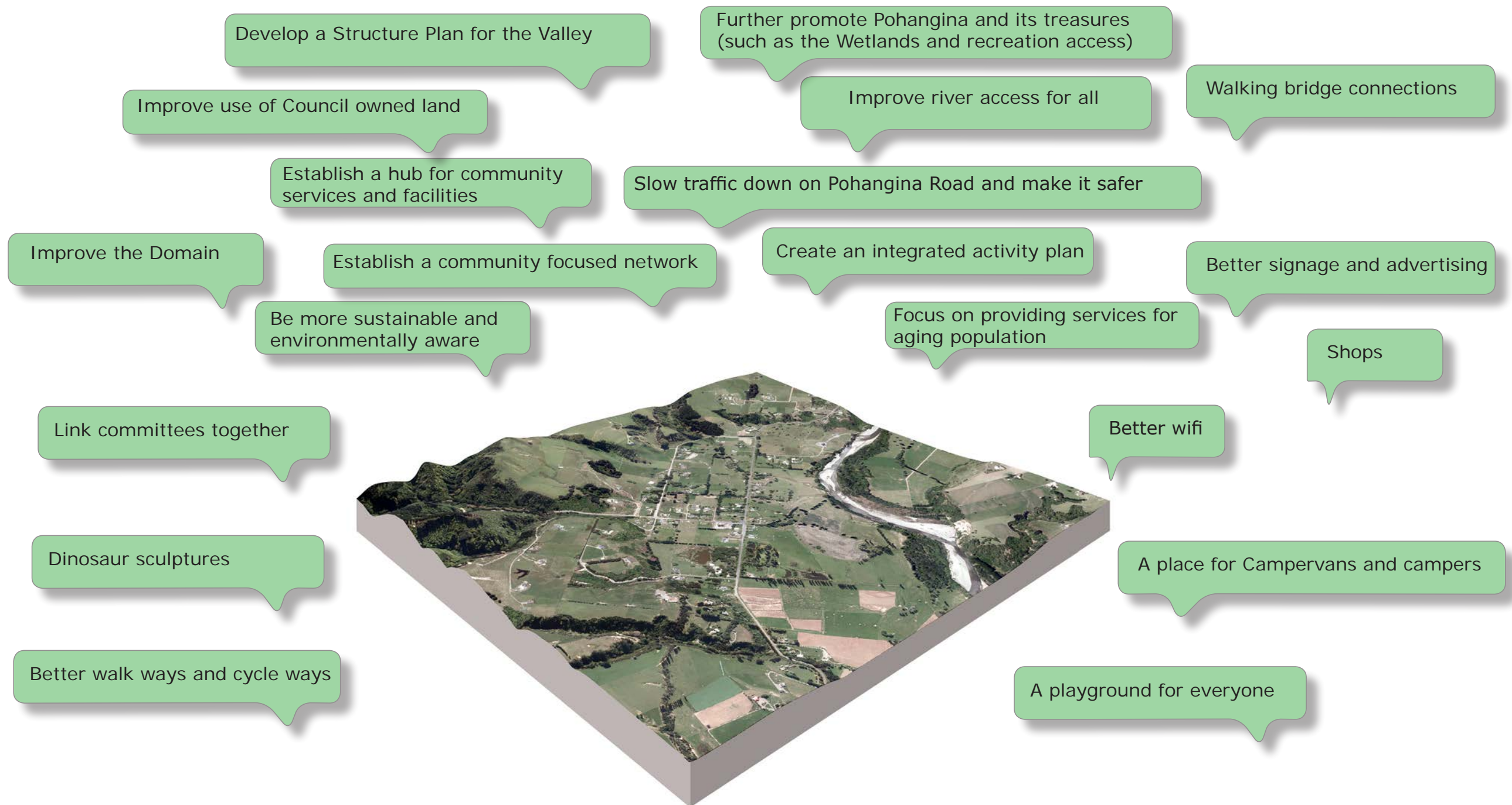
Early in the community planning workshop process a number of goals for the future of the village and the valley were identified. Existing constraints and issues were also identified and discussed during the workshops. Both the goals and the current issues informed a number of opportunities that this community action plan could look to address. These emerging opportunities comprised of physical and non - physical improvements to the community. A list of ways forward for the community planning programme were then discussed and identified.





# DRAFT

## Ideas and opportunities generated by the community:



## 4. Community Vision

The following community vision statement has been developed during the community planning process. This statement represents the community's values and aspirations for the future of Pohangina Valley. It is considered to be a shared vision statement from across the Pohangina Valley community.

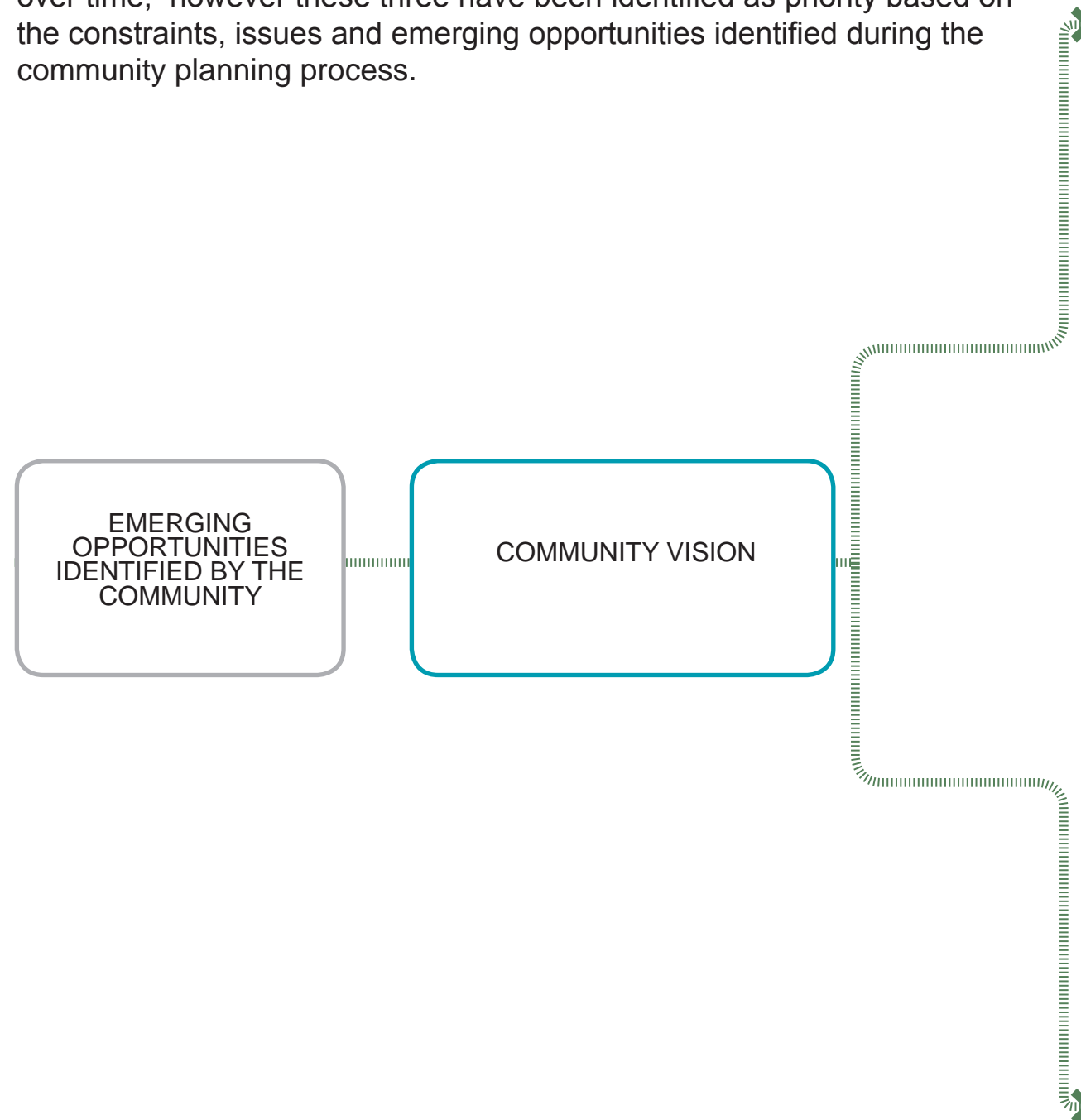


***Our vision is to retain and enhance the quality of life for our current and future residents, to attract and welcome visitors to our valley, and to initiate and champion progressive ways to protect our environment and sustain our resilient community.***



## 5. Recommended strategic projects

This community action plan recommends three specific strategic projects to help deliver the community vision. Further strategic projects may occur over time, however these three have been identified as priority based on the constraints, issues and emerging opportunities identified during the community planning process.



The recommended strategic projects are:

### 1: PREPARE A POHANGINA RECREATION STRATEGY



This should consider:

- Opportunities for recreation across the valley
- Access to recreation
- Local and regional facilities ( eg the Domain and Raumai reserve)
- Flexibility of space for events and programmes
- Signage, heritage and interpretation
- Viewpoints and tourist destinations
- Ongoing maintenance
- Current projects underway

### 2: PREPARE A RIVER MANAGEMENT FRAMEWORK



This should consider:

- Existing management plans
- Spatial understanding of the river
- Access and legibility
- Signage, heritage and interpretation
- Recreational opportunities
- Viewpoints and tourist destinations
- Local and regional facilities
- Ongoing maintenance
- Current projects underway

### 3: PREPARE A VILLAGE MASTER PLAN



This should consider:

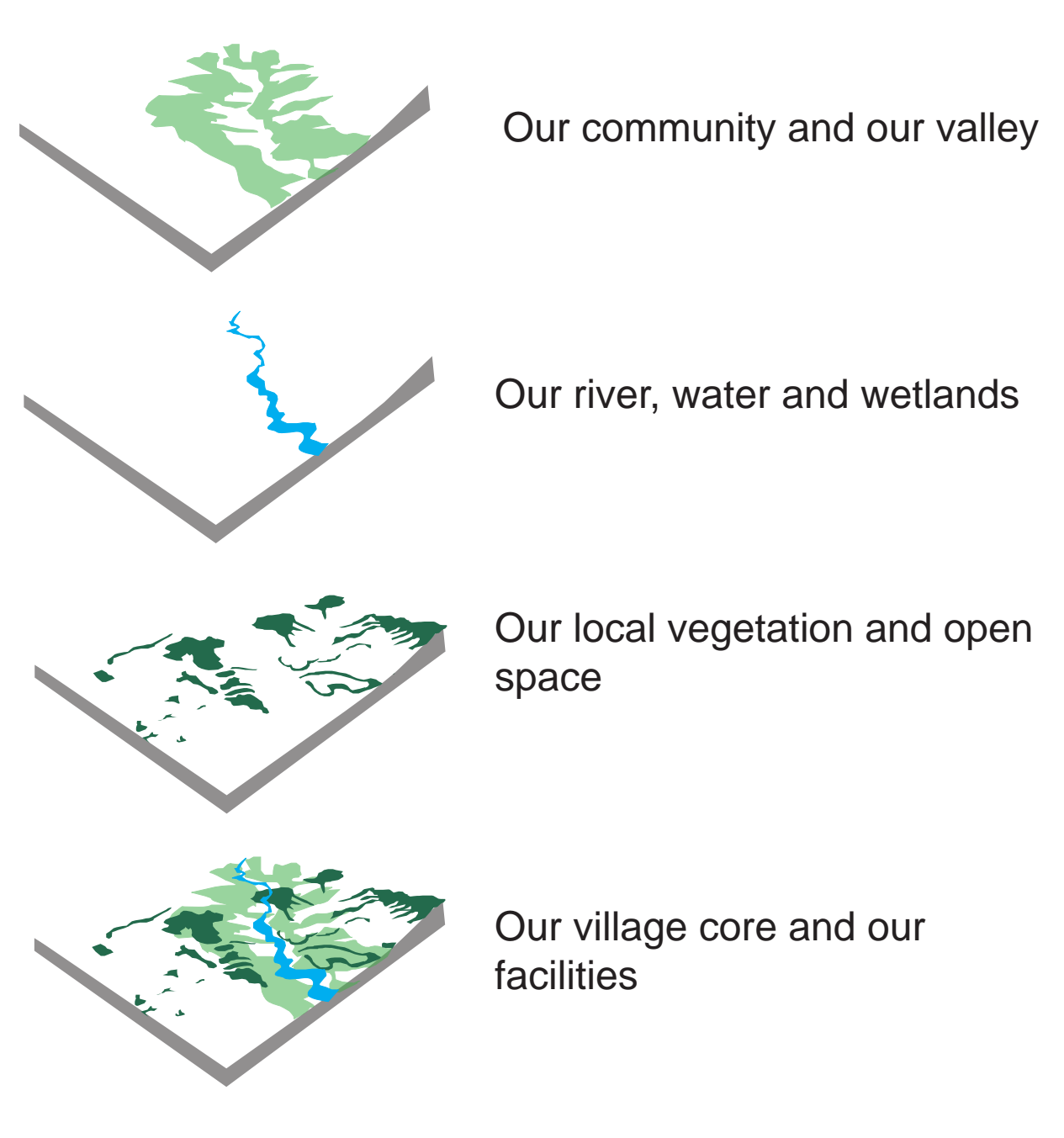
- Accessibility and legibility
- Low impact design and water sensitive design
- Vegetation
- The domain and access to it
- Signage, heritage and interpretation
- Viewpoints and tourist destinations
- Local and regional facilities
- Connections and links
- Ongoing maintenance
- Current projects underway

## 6. Areas of focus and action plans

In addition to the three strategic projects, this community action plan includes a list of specific actions to help deliver the community vision. These actions have been structured under four areas of focus.

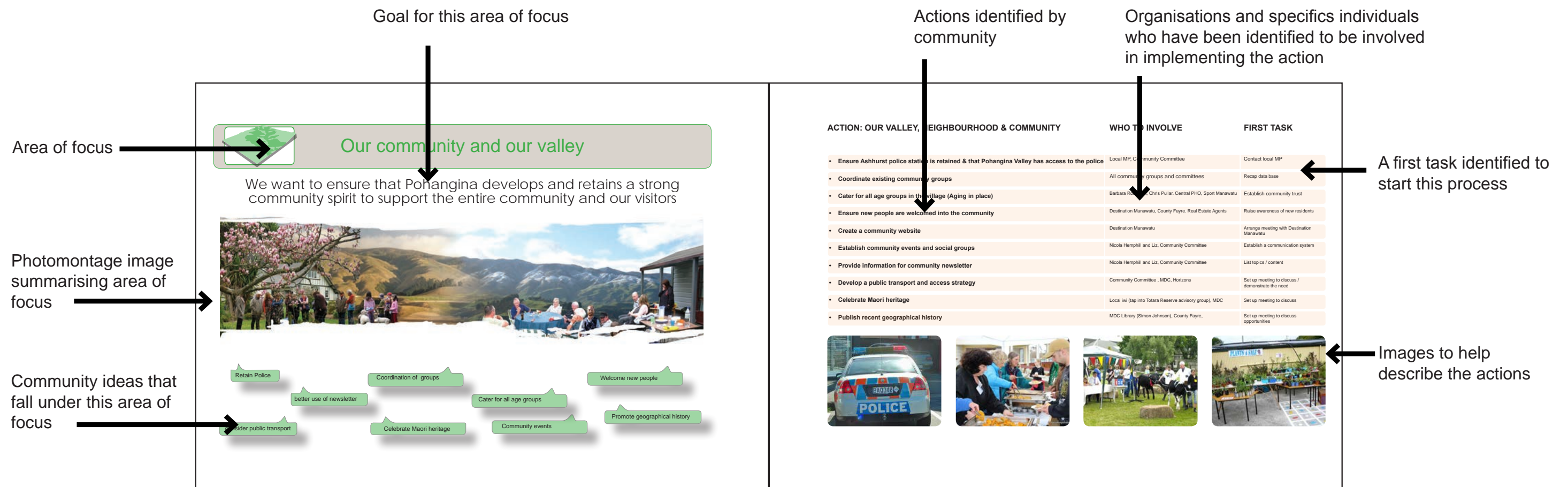
*Our vision is to retain and enhance the quality of life for our current and future residents, to attract and welcome visitors to our valley, and to initiate and champion progressive ways to protect our environment and sustain our resilient community.*

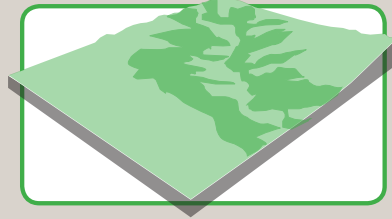
**There are four areas of focus to help deliver the community vision:**





The following diagram shows how to use the Actions Plans:





## Our community and our valley

We want to ensure that Pohangina develops and retains a strong community spirit to support the entire community and our visitors



Retain Police

Coordination of groups

Welcome new people

better use of newsletter

Cater for all age groups

Promote geographical history

consider public transport

Celebrate Maori heritage

Community events



## ACTION: OUR COMMUNITY AND OUR VALLEY

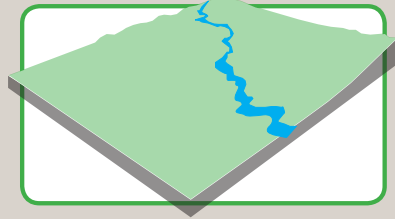
## WHO TO INVOLVE

## FIRST TASK

• <b>Ensure strong links between the community and the Police and that the Ashhurst Police Station is retained</b>	Local MP, PVCC, Police	Contact local MP
• <b>Coordinate existing community groups</b>	All community groups and committees	Organise a gathering with all volunteers
• <b>Cater for all age groups in the valley</b>	Central PHO, Sport Manawatū	Establish Community Trust
• <b>Enable ageing in place</b>	Central PHO, Sport Manawatū	Establish Community Trust
• <b>Ensure new people are welcomed into the community</b>	CEDA, County Fayre, Real Estate Agents, PVCC, MDC New Residents' Pack	Raise awareness of new residents
• <b>Create a community website</b>	PVCC	Establish and maintain website
• <b>Establish community events and social groups</b>	PVCC, County Fayre	Establish a communication system
• <b>Provide information for community newsletter</b>	PVCC	List topics / content
• <b>Develop a public transport and access strategy</b>	PVCC, MDC, Horizons	Set up meeting to discuss/demonstrate the need
• <b>Incorporate Māori heritage</b>	Local Iwi, Totara Reserve Advisory Group, MDC	Set up meeting to discuss
• <b>Publish recent geographical history</b>	MDC Library, County Fayre	Set up meeting to discuss opportunities
• <b>To retain and develop the Pohangina Library</b>	MDC Library, County Fayre, PVCC	PVCC to work with County Fayre to investigate and make submission







## Our river, water and wetlands

We want to ensure that Pohangina has the right strategies to protect, enhance and allow access to waterways and wetlands for our community and our visitors



Better access to land adjoining water

Enhance Raumai Reserve

Better access to water

Improve bridge connections

Address flooding issues

Expand wetlands

Update flood maps



## ACTION: OUR RIVER, WATER AND WETLANDS

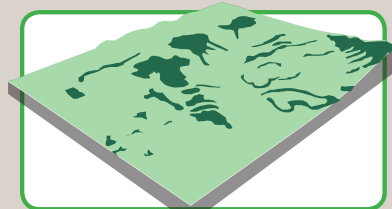
## WHO TO INVOLVE

## FIRST TASK

• <b>Community to be informed and involved in river management plans</b>	PVCC, Horizons, Community Communications Group, MDC	Contact Horizons
• <b>Improve Raumai Reserve and access to the river (including signage)</b>	MDC, PVCC, Police	Prepare a plan for improvements
• <b>Provide recreational opportunities and links to our water, landscape and adjoining waterways</b>	DOC, Horizons, MDC, PVCC, WANZ	Link with a recreation strategy
• <b>Evaluate Raumai Bridge’s connection and approaches to ensure they are sustainable and resilient to washout when the river is in flood</b>	MDC, Horizons	Undertake evaluation
• <b>Consider alternative locations for bridges across the Pohangina River</b>	MDC, Horizons	Link with an overall plan and do feasibility
• <b>Implement water sensitive design to new infrastructure (such as rain gardens and permeable paving)</b>	MDC, Horizons, DOC and PVCC	Consider guidelines and tools as part of MDC District Plan
• <b>Retain and support all wetlands including those on private land</b>	Horizons, DOC, MDC and land owners	Link with a river framework
• <b>Establish line of communication with Horizons</b>	PVCC and Horizons	Contact Horizons
• <b>Establish line of communication with Rangitane</b>	PVCC and Rangitane	Contact Rangitane
• <b>Prevent people from driving in waterways</b>	Horizons, MDC, Police	Organise a meeting with Horizons, MDC and Police







## Our local vegetation and open space

We want to ensure that we protect and enhance our vegetation and open spaces for our community and our visitors



Promote Beehive Walk

Promote local gardens

Arboretum proposal

Better recreational tracks

Create farm walks

Enhance lookout point Mt Richards Road

Access to Southern Ruahine

Environmental improvements



## ACTION: OUR LOCAL VEGETATION AND OPEN SPACE

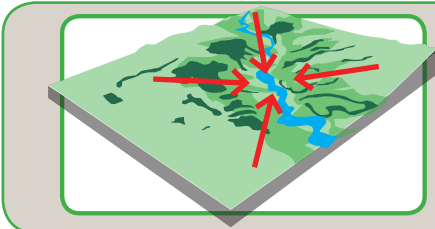
## WHO TO INVOLVE

## FIRST TASK

<ul style="list-style-type: none"> <li>Develop paper roads as walk/cycle/bridle ways</li> </ul>	MDC, PVCC, Walkway PD, Service Club, DOC, Horizons	Identify suitable paper roads and make a submission to Council to be included in its Cycle and Walkway Strategy
<ul style="list-style-type: none"> <li>Establish and maintain well connected local walkways, cycleways and horse tracks eg Beehive</li> </ul>	MDC, PVCC, Walkway PD, Service Club, DOC, Horizons	PVCC to investigate and make submission
<ul style="list-style-type: none"> <li>Involve community in planting days eg Domain, Totara Reserve</li> </ul>	School, PVCC, MDC, DOC	Work out a plan
<ul style="list-style-type: none"> <li>Develop a vegetation strategy for the village core (more trees, preserve and maintain existing trees)</li> </ul>	MDC, PVCC, Massey University	Prepare a business case and contact Massey or other potential partners
<ul style="list-style-type: none"> <li>Promote existing DOC land via newsletter</li> </ul>	CEDA, DOC, Horizons, PVCC	Meet with CEDA
<ul style="list-style-type: none"> <li>Investigate tree canopy walkways within open spaces</li> </ul>	Totara Reserve, MDC, DOC, Horizons, Totara Reserve Advisory Group	Link with recreation strategy
<ul style="list-style-type: none"> <li>Support management plans for Southern Ruahines (including weed and pest management)</li> </ul>	DOC, Horizons, PVCC	PVCC to meet with Horizons and DOC. Link with recreation strategy
<ul style="list-style-type: none"> <li>Support and Promote local gardens (open days)</li> </ul>	Coffee and Gumboots, CEDA, MDC	Establish a promotion strategy
<ul style="list-style-type: none"> <li>Promote 'The Country Road' and provide look out points at key areas</li> </ul>	CEDA, MDC, Sport Manawatū, DOC	Establish a promotion strategy
<ul style="list-style-type: none"> <li>Lower Pohangina's carbon footprint</li> </ul>	PVCC, MDC and Horizons	PVCC to investigate and make submission
<ul style="list-style-type: none"> <li>Protect and restore all forest remnants on public land</li> </ul>	PVCC, MDC and Horizons	PVCC to investigate and make submission







## Our village core and our facilities

We want to ensure that Pohangina has the right facilities in the right place for our community and our visitors



Promote Farmers Market

Playground

Facility Improvements

School connections

Consistent signage

UF Broadband / Communication

Recreation development

Celebrate history

Connect and link significant places



## ACTION : OUR VILLAGE CORE AND OUR FACILITIES

## WHO TO INVOLVE

## FIRST TASK

• <b>Set up market events (Farmers / Produce Market) in the village</b>	RECAP, Feilding Promotions, Gumboots and Coffee, County Fayre	Establish a need / prepare a business case
• <b>Develop recreational opportunities (eg cricket / playground for older children)</b>	MDC, Sports Clubs, PVCC	Link with recreation strategy
• <b>Improve our domain and access to it including investigating installing toilets</b>	MDC, landowners	Link with recreation strategy and prepare a spatial plan
• <b>Maintain public buildings, facilities and assets (eg bus shelter and cemetery)</b>	MDC, PVCC, County Fayre, School	PVCC to investigate and make submission
• <b>Further develop signage strategy for Pohangina (including street banners and finger posts)</b>	CEDA, Lions Club, MDC	Meet to discuss tasks and responsibilities
• <b>Make more use of old Pohangina school for the whole community</b>	MDC, School, PVCC	Meet to discuss opportunities / brainstorm ideas
• <b>Celebrate history of Pohangina buildings (eg Luttrell's Museum, County Fayre)</b>	MDC, County Fayre, Luttrell's Museum, CEDA	Establish a strategy
• <b>Pursue improvements to Telecommunications</b>	MDC service providers	Prepare business case
• <b>Establish events and opportunities that provide fundraising / grants for the community</b>	MDC, PVCC, County Fayre	Explore potential for Creative Communities funding
• <b>Encourage local support of events</b>	PVCC, County Fayre and Hall Committee	Initiate discussion between the groups
• <b>Encourage outdoor music events</b>	PVCC, County Fayre and Hall Committee	Initiate discussion between the groups





## 7. Next Steps

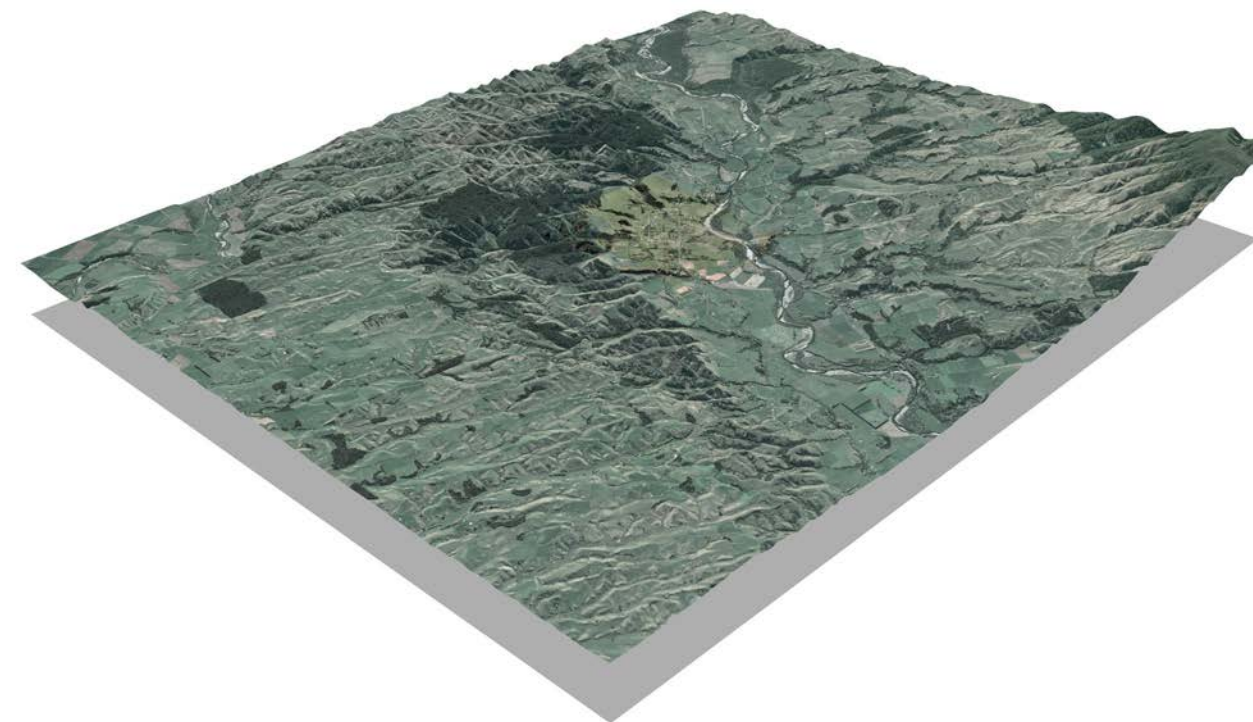
This community action plan is intended to be submitted to Manawatu District Council (MDC) to be considered as part of their annual and long term planning. It is recommended that MDC digest and consider the individual actions and seek to commence the recommended strategic projects.

There are a number of actions within this plan that are already underway, others that can start immediately, and some that may take time to get going. Most of the actions and strategic projects will require a numbers of parties / agencies and individuals to work together to implement.

The action plans are intended to be 'living documents' whereby the action list can be updated and refreshed on a regular basis. New actions may be added to under each areas of focus. Any new action should be assessed based on how it seeks to deliver the Community Vision.

Outcomes from the actions and strategic projects can be assessed against the Community Vision statement and the goals indicated under each of the areas of focus.

A review of the Community Vision statement and the areas of focus should also be undertaken on an annual basis to ensure that this still reflects a shared representation of the Pohangina Valley community.



Ownership of this document will be the responsibility of the Pohangina Valley Community Committee (PVCC) who will work in partnership with Manawatu District Council (MDC) and others towards implementation.

PVCC will work to create a communication strategy which will include documenting how various actions will be coordinated and reviewed.





