

KIMBOLTON COMMUNITY PLAN

OUR GUIDE FOR THE FUTURE OF KIMBOLTON
DECEMBER 2013

Revised by the Community in June 2022



Document Quality Assurance

Bibliographic reference for citation: Boffa Miskell, 2013. Kimbolton Community Plan, A guide for the future of Kimbolton. Report by Boffa Miskell Limited for the Kimbolton Community and Manawatu District Council.		
Prepared by:	Marc Tomes Principal Boffa Miskell Ltd	
Reviewed by:	Vicki Wills Community Development Adviser Manawatu District Council	
Status: FINAL	Revision / version: 5	Issue date: 5 DEC 2013

File ref: U:\2013\W13025_MTO_MDC_KimboltonCommunityPlan\Graphics\W13025_010_community_plan.indd

© Boffa Miskell Limited 2013



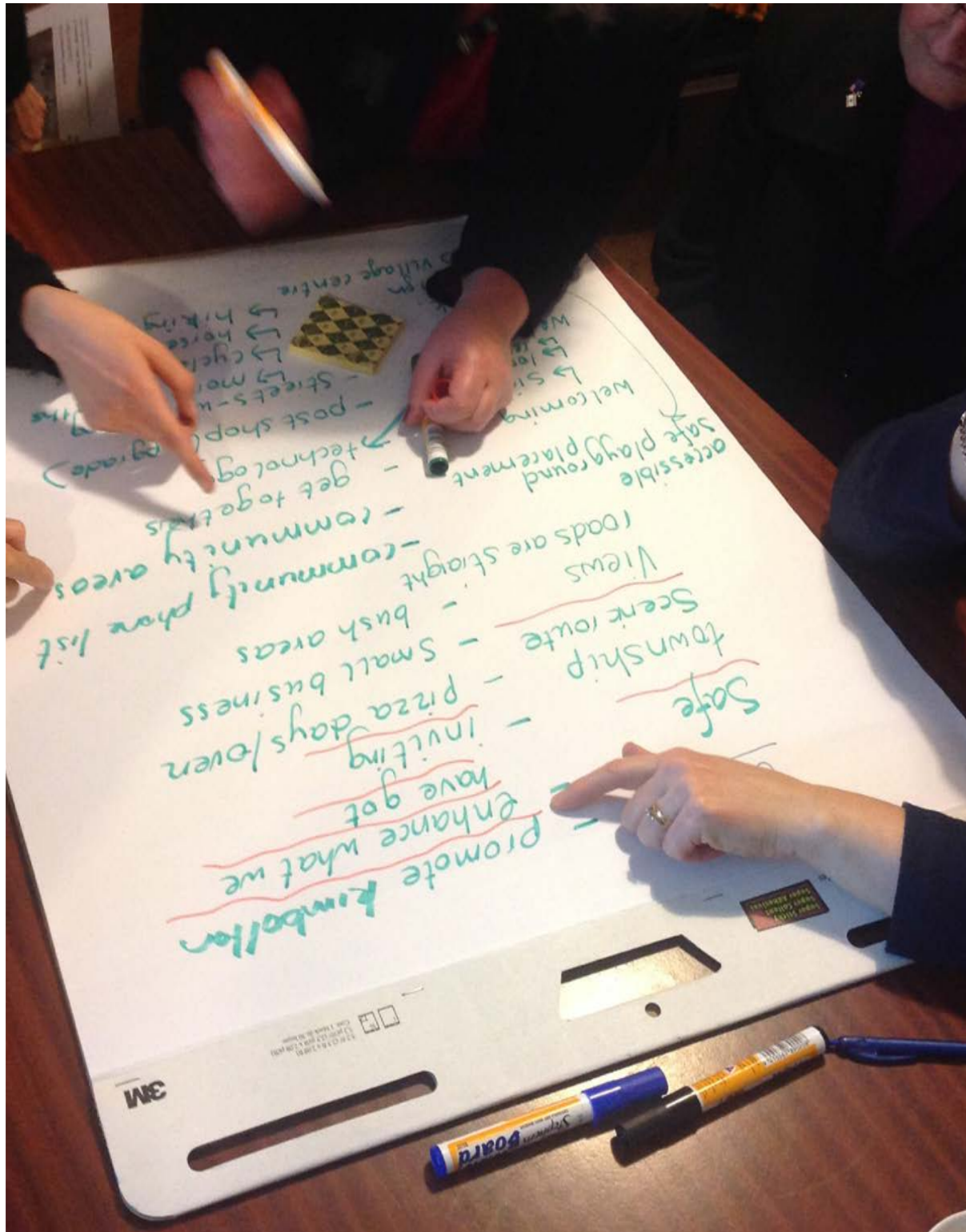


Photo taken from Community Planning workshop 1

Contents

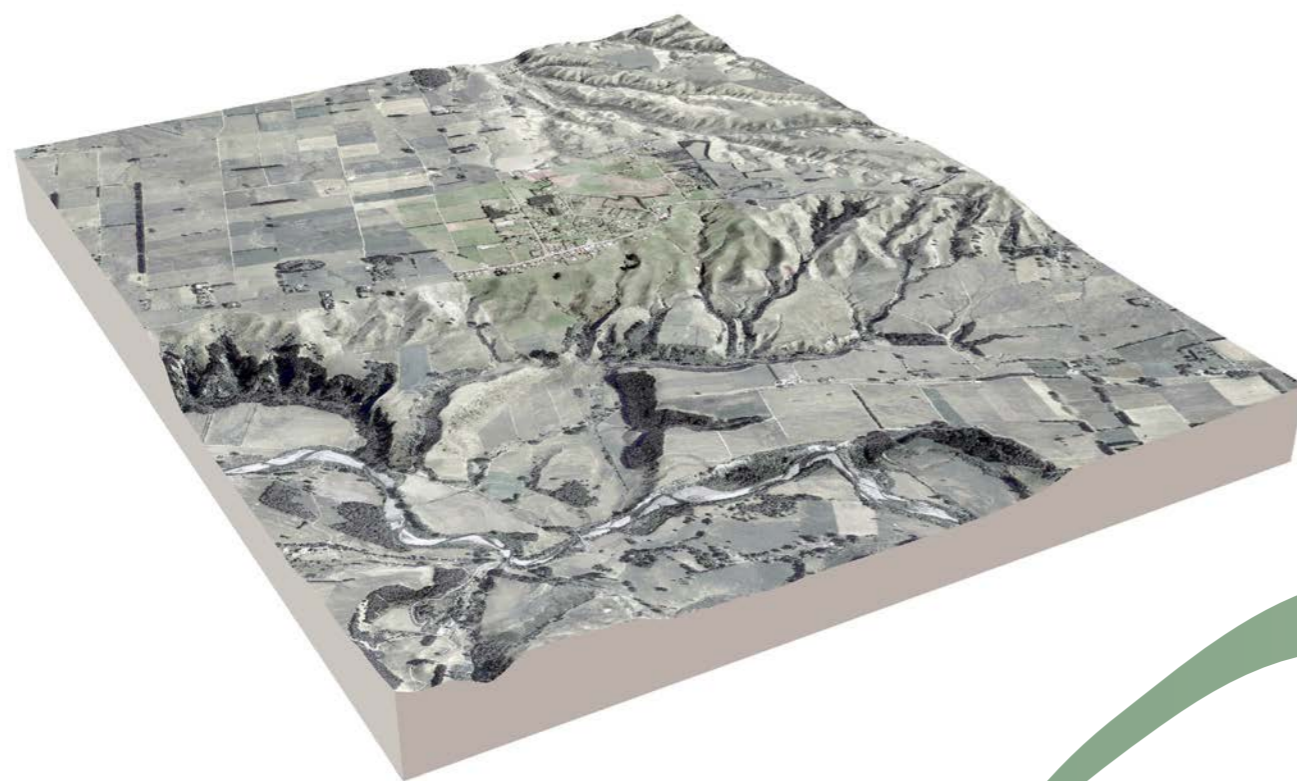
- 1. Foreword 2
- 2. Our Vision Statement 3
- 3. Kimbolton, its community and history 4
- 4. The community planning process 8
- 5. Emerging opportunities for Kimbolton 12
- 6. Areas of focus and action plans 14
- CHARISMA 16
- FACILITIES 18
- SPIRIT 20
- 7. Summary of Recommendations 22
- Appendix: Photographic record 25

1. Foreword

This community plan represents a summary of outcomes from a series of community planning workshops and meetings that occurred from May 2013 through to December 2013. This document has been compiled by Boffa Miskell Ltd on behalf of Manawatu District Council and the community of Kimbolton. The observations, ideas and opportunities identified in this plan are intended to provide an over arching and holistic summary of the community's vision and a list of specific actions that help deliver this.

The shared vision in this document has been developed by members of the Kimbolton community and builds on the work already underway by the Kimbolton Community Committee. This community plan also outlines the process used to establish the vision and illustrates some of the observations, constraints and opportunities for Kimbolton.

This community plan identifies three areas of focus and specific actions that will help the community deliver its shared vision.



2. Our Vision Statement

“We want to be known as a vibrant, welcoming and supportive community with an environment that celebrates our rich soils, colourful vegetation and amazing views.

We want to hold onto and enhance this unique sense of identity and promote ourselves as the destination within the Oroua region and along The Country Road. We want quality facilities across the village that encourage and promote a social, healthy and fun lifestyle for people of all ages”.



3. Kimbolton, its community and history



Kimbolton is a small and friendly rural village north of Feilding and Cheltenham in the Manawatu District, set on rolling rural hills with sweeping views of the Ruahine mountain range.

Kimbolton takes its name from the estate of the Duke of Manchester, the chairman of the philanthropic Emigrant and Colonists' Aid Corporation which was responsible for the European settlement of Feilding and surrounding district. The main street in Feilding was named Kimbolton Road in honour of the Duke and as the road extended north into the bush-covered countryside, the same name was used for the muddy new rural road.

However, Kimbolton township was not originally known by that name. The European settlement of Kimbolton was carried out from 1886 by the Birmingham Small Farm Association, a group of families who were mainly based at Stony Creek (now Whakarongo) near Palmerston North. The government of the day was intent on "putting the small man on the land"; and the development of a special settlement scheme was the result of this. The basis of the scheme was deferred payment for land allotted by ballot to members of a specially formed association. To begin with Kimbolton was known as Birmingham and also as Fowler's after the family whose home became the first post office in the township.

Pages 6 to 7 show a conceptual timeline of the history of Kimbolton.



Local Store, Kimbolton 1924



Local Business, Kimbolton 1924



D.W. Gibbs Sheep Dip, Kimbolton 1924



Lowes Hotel, Kimbolton 1931

Today Kimbolton contains a memorial hall, heritage library building, cafe, preschool, school, a bowling green, native reserve, rugby grounds, tavern, domain and rhododendrons gardens and nurseries.

Kimbolton is easily accessible to Feilding and many residents choose to either work in the area or commute to Feilding. The primary production is farming and cropping with other small businesses that help to promote Kimbolton.

Kimbolton's elevation allows uninterrupted views across to the Ruahine Ranges, Kapiti, Mt Ruapehu and the wider region.



View from Rangiwahia Road looking south



View towards Ruahine Range



Kimbolton Domain



Cross Hills, Garden & Nursery

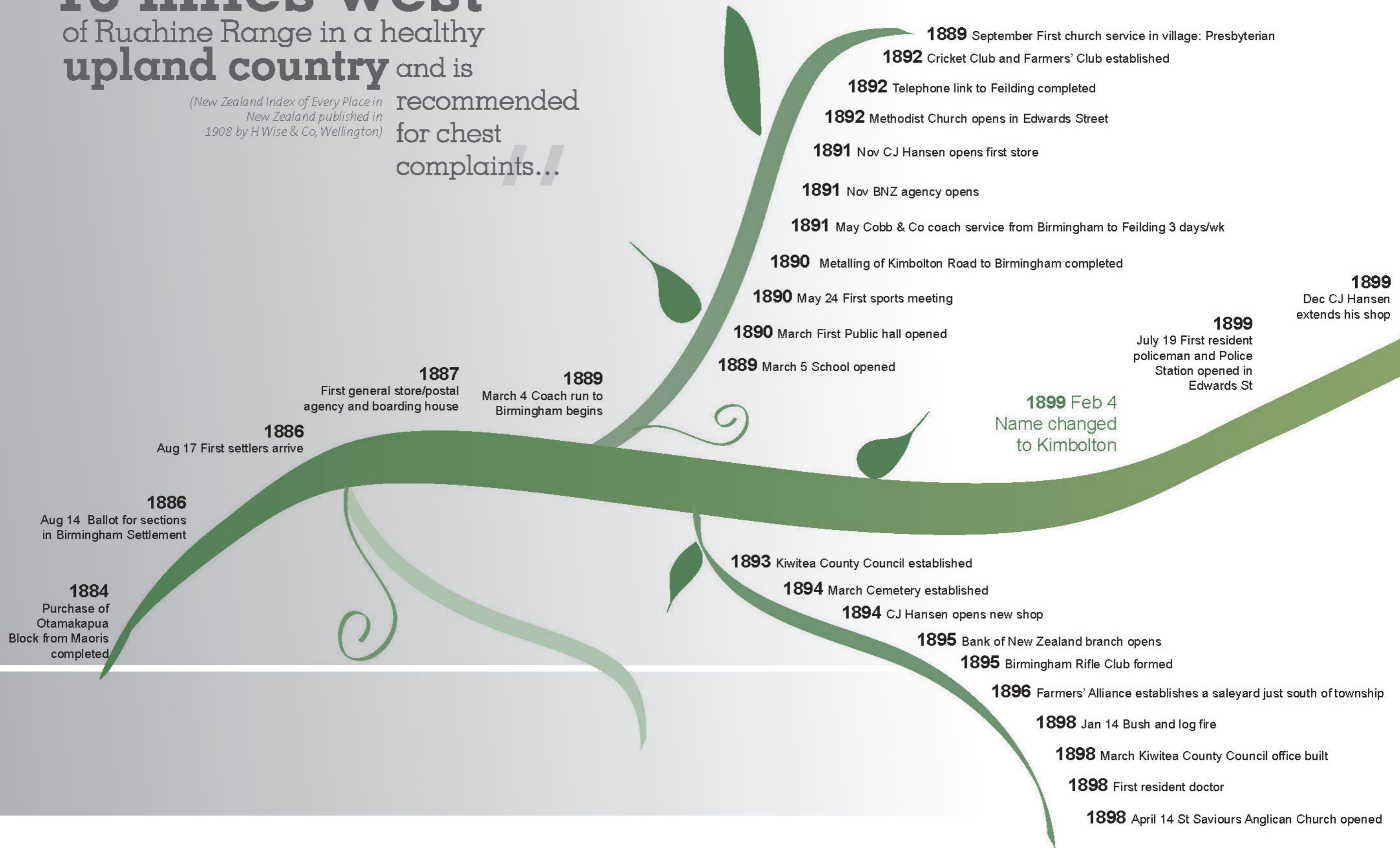


Kimbolton Hall

// ...Is situated on a plateau
10 miles west
 of Ruahine Range in a healthy
upland country and is

*(New Zealand Index of Every Place in
 New Zealand published in
 1908 by H Wise & Co, Wellington)*

recommended
 for chest
 complaints... //



1903
Feb 1
First publication of
Kimbolton Times

- 1904** Nov 14 First manual telephone exchange
- 1905** Aug 1 Post Office opens beside BNZ
- 1905** Swimming Pool opened in Kimbolton Road
- 1906** Presbyterian Church opened in Edwards Street
- 1912** Roman Catholic Church opened in Grammar Street
- 1914** June 22 New Post Office opened
- 1917** Public hall erected on corner of Edwards St and Kimbolton Rd
- 1925** BNZ erects new building on eastern side of Kimbolton Rd
- 1929** Second Hotel destroyed by fire- replaced by present building
- 1931** Country Women's Institute began
- 1934** July 15-inch snowfall
- 1938** July Road sealed from Kiwitea to Kimbolton
- 1940** 16 enlist for World War II
- 1954** Feb 24 Kiwitea-Kimbolton Plunket Society rooms opened
- 1955** Volunteer Fire Brigade formed
- 1958** Oroua Rugby Football Club formed with Headquarters at Kim.
- 1969** Sept New School opens at Kimbolton

2013
Community Plan developed

2014
125th Jubilee

1970 New Zealand Rhododendron Society establishes garden in Haggerty Street and Cross Hills Gardens opened

1970 June 21 New Catholic Church opens on corner Kimbolton Rd and Edwards St

1972 Aug 5 Lions Club formed

1981 Water Supply Scheme fully operational

1988 Bowl Centennial

1989 100th Centennial for the School and District

1993 Amalgamation of 5 Councils to Form Manuawatu District Council

2000 Hansen's opened as a cafe

2004 Flood Event

2007 Storm Event

2008 Relocation of the Kimbolton Library

2008 Establishment of the Little Ark Preschool

2008 Country Fair opens as an annual event

2009 Kimbolton School won International Problem Solving Competition in USA

2009 Country Roads established

2011 Amalgamation of Oroua Rugby Club and FOB

2012 Fibre optic cable & cell phone tower

4. The community planning process

Kimbolton's Community Planning programme has been ongoing since May 2013. We have had a number of community workshops held in the community hall facilitated by Manawatu District Council.

The community workshops focussed on establishing a shared vision for what we want our village to be in the future. We discussed some of the current issues and constraints, but also focussed on opportunities for improvements. This information has informed our draft Community Plan.

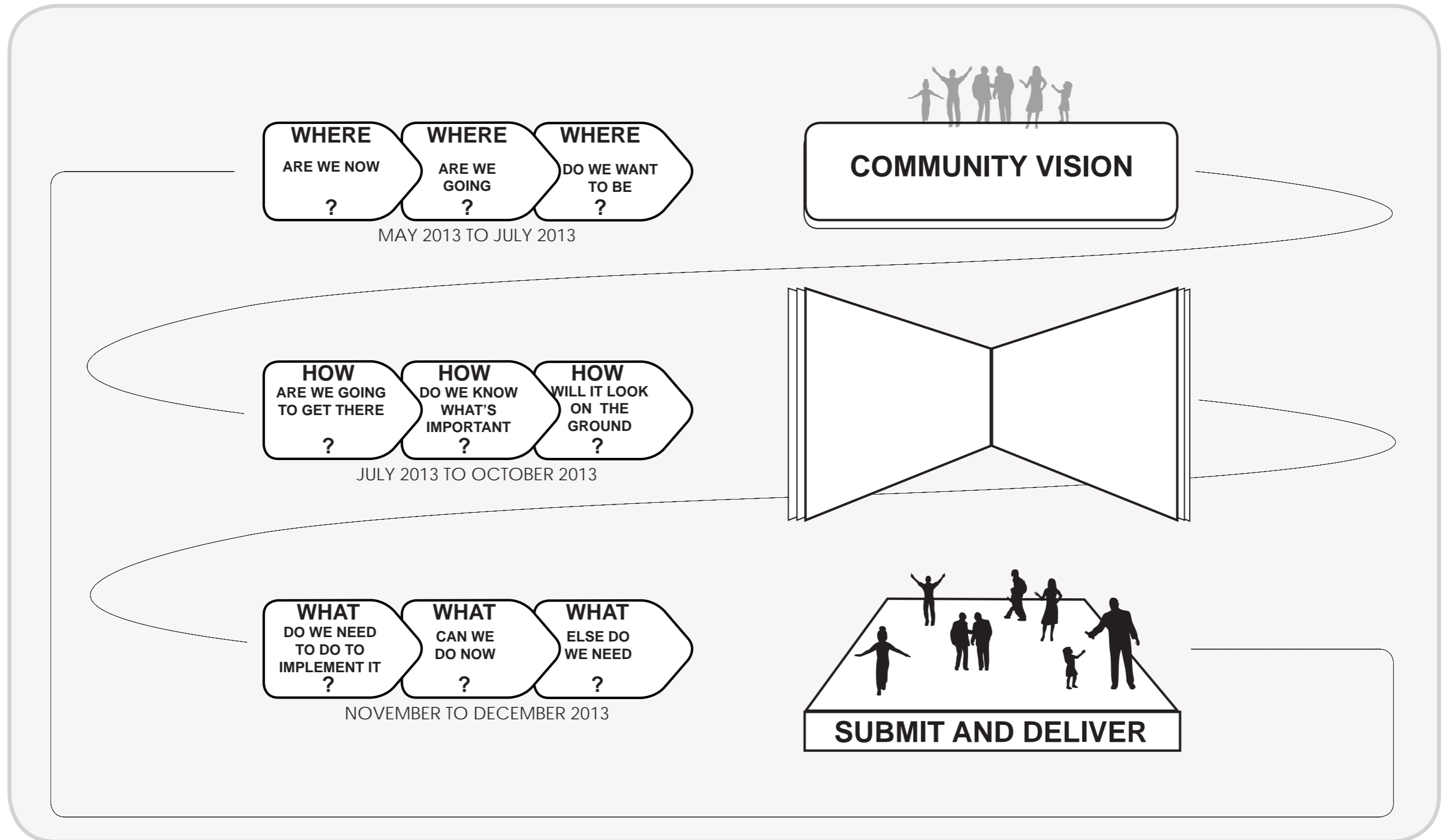
The Community Plan is intended to summarise the vision and aspirations we have for our village and community. It also provides a list of actions that we feel are important to the whole community. Some of the actions we have identified may be easy to deliver, others are more challenging.

The thoughts, ideas, drawings and actions presented in this Community Plan are intended to encourage the community with the aim of working towards a shared vision and plan for the Kimbolton community.

This Community Plan and the list of preferred actions will be submitted to Manawatu District Council to help them identify projects that may be included in their future workplans.



Members of Kimbolton community at the public exhibition held on August 2013



Typical community planning process with key dates for Kimbolton

Quotations from our community:

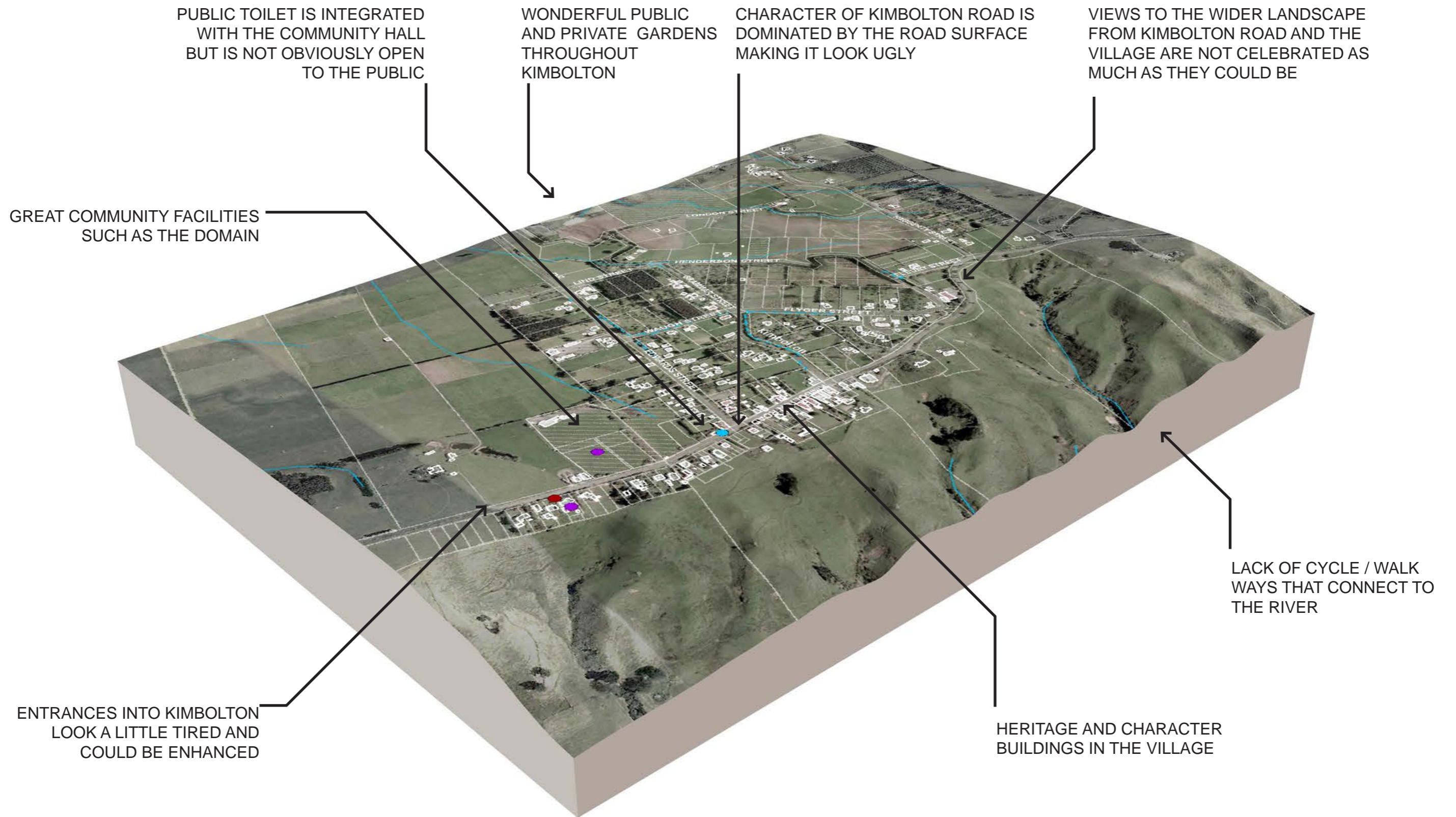
"We are proud of our Kimbolton community and look forward to implementing this fantastic plan"

"The planning process has given us a vehicle to bring to fruition ideas individuals of the community have had for a long time"

"Looking forward to brightening up the village and bringing it alive again"

"The process has been extremely refreshing and it's great to be part of Kimbolton's future changes"

OBSERVATIONS AND CONSTRAINTS:



5. The emerging opportunities

Through our community planning workshops we identified a number of goals for future development of the village. We also identified existing constraints and issues which informed consideration for a number of emerging opportunities for this Community Plan. These emerging opportunities comprise physical and non - physical improvements to our community.

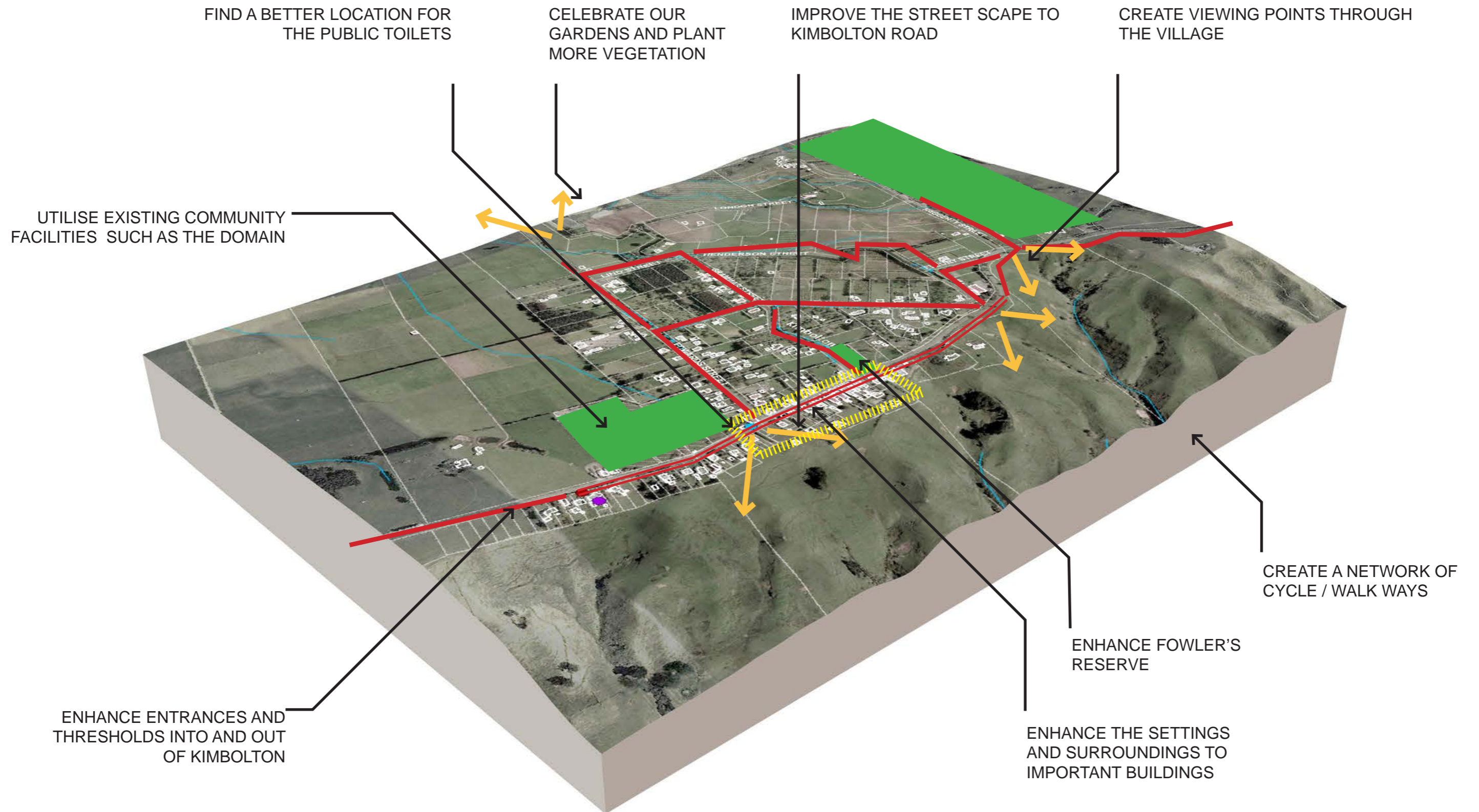
Opportunities for non - physical enhancements include:

- Connecting a fragmented community
- Maintaining a community website
- Establishing a community network
- Enticing more businesses to Kimbolton
- Promoting Kimbolton as a destination
- Holding more community events
- Celebrating the Heritage of Kimbolton

Opportunities for physical changes / enhancements include:

- Enhancing the environment of our village
- Improving connectivity across Kimbolton
- Improving the look and use of open spaces
- Improving community facilities
- Improving safety and perceived safety
- Creating viewpoints across the valley
- Creating better walking / cycling tracks

OPPORTUNITIES PLAN:



6. Areas of focus and action plans

Our vision statement is:

We want to be known as a vibrant, welcoming and supportive community with an environment that celebrates our rich soils, colourful vegetation and amazing views.

We want to hold onto and enhance this unique sense of identity and promote ourselves as the destination within the Oroua region and along The Country Road. We want quality facilities across the village that encourage and promote a social, healthy and fun lifestyle for people of all ages.

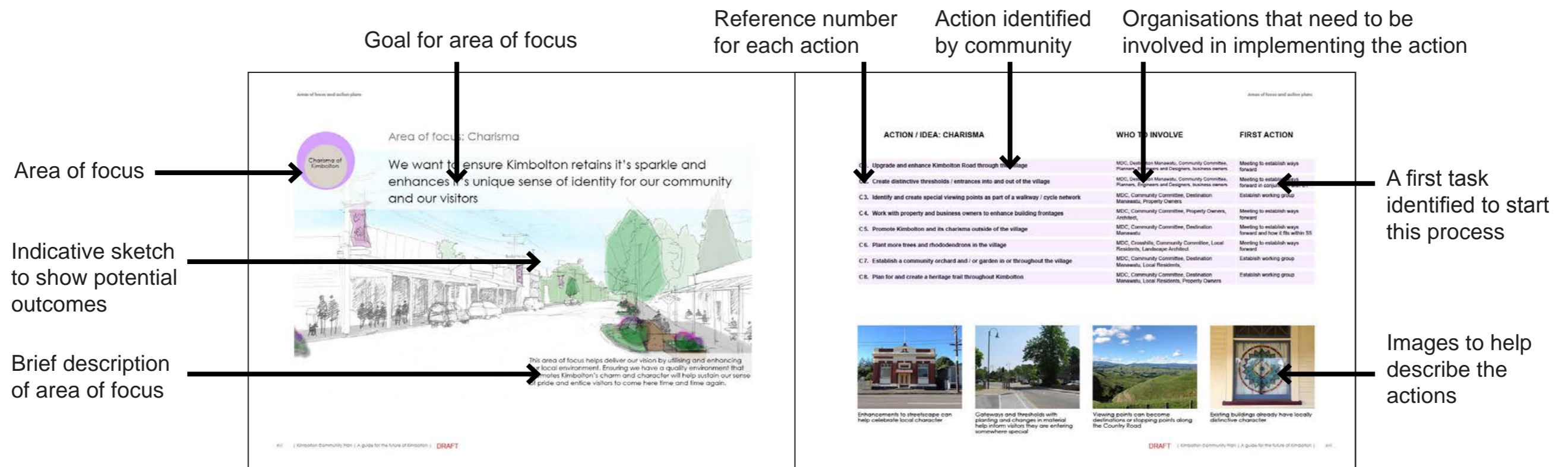
There are 3 key areas to focus on to achieve this vision. These are:



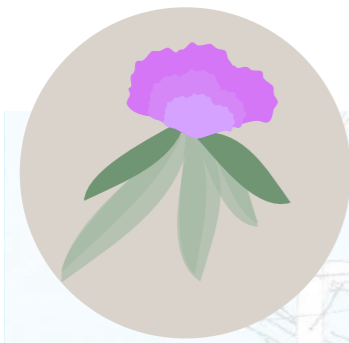
The following pages identify a list of specific actions that relate to each of the areas of focus.

How to use the Action Plans

The following diagram shows the Actions Plans purpose and how they should be used:



Area of focus: Charisma



We want to ensure Kimbolton retains its sparkle and enhances its unique sense of identity for our community and our visitors



This area of focus helps deliver our vision by utilising and enhancing our local environment. Ensuring we have a quality environment that promotes Kimbolton's charm and character will help sustain our sense of pride and entice visitors to come here time and time again.

ACTION / IDEA: CHARISMA

WHO TO INVOLVE

FIRST TASK

C 1. Continue with programme for creating and maintaining distinctive thresholds / entrances into and out of the village	MDC, CEDA, Community Committee, Planners, Engineers and Designers, business owners	Meeting to establish ways forward
C 2. Identify and create special viewing points as part of a walkway / cycle network	MDC, Community Committee, Destination Manawatu, Property Owners	Establish working group to identify locations
C 3. Work with property and business owners to enhance building frontages	MDC, Community Committee, Property Owners, Architect	Meeting to establish ways forward
C 4. Promote Kimbolton and its charisma outside of the village	MDC, Community Committee, CEDA	Meeting to establish ways forward
C 5. Plant more trees and rhododendrons in the village	MDC, Crosshills, Community Committee, Local Residents, Landscape Architect	Meeting to establish ways forward
C 6. Plan for and create a heritage trail throughout Kimbolton	MDC, Community Committee, CEDA, Local Residents, Property Owners	MDC, Community Committee, CEDA, Local Residents, Property Owners
C 7. Incorporate public art and sculpture throughout the village	MDC, Community Committee, CEDA, Local Residents, Local Artists	Meeting to establish ways forward
C 8. Erect a map and information signs on walkways	MDC, Community Committee	Meeting to establish ways forward



Enhancements to streetscape can help celebrate local character



Gateways and thresholds with planting and changes in material help inform visitors they are entering somewhere special



Viewing points can become destinations or stopping points along The Country Road



Existing buildings already have locally distinctive character



Area of focus: Facilities

We want to ensure that Kimbolton has the right facilities in the right place for our community and our visitors



This area of focus helps deliver our vision by acknowledging the importance of community facilities for residents, groups, sporting clubs, local businesses and visitors. Through careful planning we want to make sure that we have appropriate facilities that are accessible, safe and useful. Any new facilities should also help contribute towards growing and celebrating the charisma of Kimbolton.

AREA OF FOCUS: FACILITIES

We want to ensure that Kimbolton has the right facilities in the right place for our community and our visitors:

ACTION PLAN	WHO TO INVOLVE	FIRST TASK
F1. Install a community stone oven/BBQ in our public open space	MDC, Community Committee, Local Residents, Artists and Designers	Prepare a feasibility report and investigate oven designs
F2. Investigate establishing a cycle / walk way across the village to the river and wider networks	MDC, Community Committee, CEDA, Local Residents, Planners, Designers	Establish working group and start mapping potential
F3. Investigate an area for young people to enjoy and be active	MDC, Community Committee, Kimbolton School, Landscape Architect	Establish working group and start design process
F4. Develop a signage strategy for Kimbolton (including banners and heritage info)	MDC, Community Committee, CEDA, Local Residents, Designers	Establish working group and define project brief
F5. Investigate possibility of developing an overnight stopover site for campervans to include shower facility and dump station.	MDC, Community Committee	Organise a meeting with representatives from the Rangiwahia Community Committee
F6. Advocate to Council for the widening of Edward Street and installation of a new footpath.	MDC, Community Committee	Meeting to establish ways forward
F7. Investigate the installation of a car charging station in Kimbolton.	MDC, Community Committee, Power Companies	Meeting to establish ways forward
F8. Investigate utilising the ex concrete post factory for a potential museum/heritage/photos site.	MDC, Community Committee	Meeting to establish ways forward



A community oven provides a place where the community can meet, cook and eat



A continuous cycle / walkway can be used by the local community and visitors



New public toilets could be positioned to utilise views across the valley and could become a destination along The Country Road



Providing an exciting area for the younger members of the community to be active helps promote a healthy and fun lifestyle



Area of focus: Spirit

We want to grow our existing neighbourhood spirit and connect our diverse community across all ages so that everyone loves being in Kimbolton.



This area of focus helps deliver our vision by identifying actions and initiatives that can continue to enhance our community spirit and neighbourliness. Community groups, networks and ongoing events help bring the community together, interact and support each other.

Often these initiatives rely on the provision of appropriate facilities (such as a community space within the village or a virtual space on the web)

AREA OF FOCUS: FACILITIES

We want to ensure that Kimbolton has the right facilities in the right place for our community and our visitors:

ACTION PLAN	WHO TO INVOLVE	FIRST TASK
S 1. Set up regular market events	Community Committee, CEDA, Jubilee Committee, Rodney Wilson	Set up a market / events working group
S 2. Make better use of the school facilities for the whole community	Community Committee, Kimbolton School	Meeting to establish ways forward
S 3. Establish a Keep Kimbolton Beautiful initiative	Community Committee, CEDA, Jubilee Committee, Garden Group, School	Establish a working group
S 4. Establish community events and social groups	Community Committee, Jubilee Committee, Garden Group, School, Rural Support, Sport Clubs	Establish a working group and compile an events calendar
S 5. Continue with Neighbourhood Support initiative	Community Committee, Community Constable, Neighbourhood Support Manawatū, Emergency Management	Meeting to establish ways forward
S 6. Continue with regular postings of community notices on the Kimbolton Facebook Page	Community Committee, Kimbolton School	Meeting to establish ways forward, School to facilitate
S 7. Work with current training providers to provide adult education courses being delivered in Kimbolton	Community Committee, Training Providers	Meeting to establish ways forward



Regular markets bring the community together and encourage others to visit



Making better use of community facilities (such as the school) for the entire community



Empowering the community to keep Kimbolton clean and beautiful strengthens community pride.



Community events bring people together and can help improve the local environment (ie working bees)

7. Summary of Recommendations

The over arching objective for this community planning programme has been to establish ways for both Manawatu District Council and Kimbolton community to work together to establish and deliver a shared vision. To help us focus on delivering in a cohesive and comprehensive manner, we have identified five specific priority projects. Each project will require careful coordination and resources, and will typically involve a number of different stakeholders. Using these strategic projects as a guide will help deliver individual actions under each of the areas of focus.

Establish and confirm an appropriate place for **public toilets** in Kimbolton.

This should consider:

- Feasibility of implementation
- Accessibility and safety
- Ongoing maintenance
- A place to stop along The Country Road

FIRST STEP:
Community to agree on location

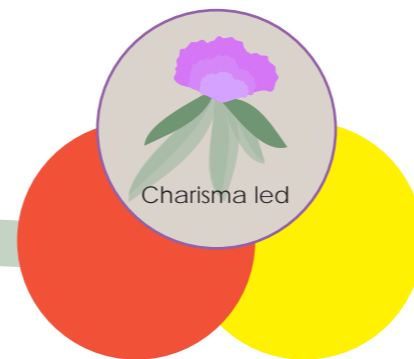


Prepare a **streetscape upgrade** project for Kimbolton Road.

This should consider:

- Enhance the character of the street
- Designing appropriate thresholds in and out
- Improve drainage
- Working with business and land owners
- Safety and accessible routes
- Traffic movement, parking and bus stops
- Planting strategy
- Existing asset management plan
- Ongoing maintenance
- Develop a public art and sculpture strategy

FIRST STEP:
Agree programme and available resources

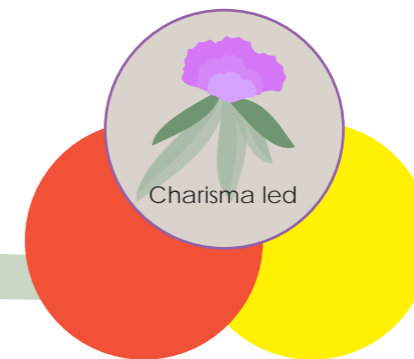


Establish a **Signage Strategy** for Kimbolton.

This should consider:

- The character and charisma of Kimbolton
- Accessibility and legibility
- Heritage and interpretation
- Viewpoints and tourist destinations
- Local and regional facilities
- The Country Road and Oroua region

FIRST STEP:
Coordinate with Destination Manawatu

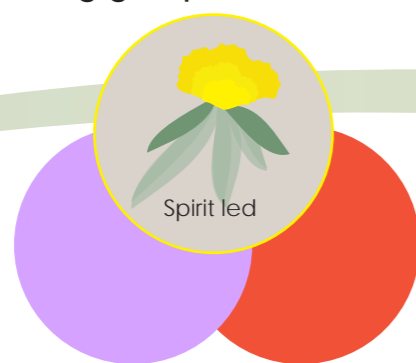


Establish a **Community Events Group**.

This should consider:

- Website and communication strategy
- Utilising existing community groups and initiatives
- Utilising existing community facilities such as the school, the domain and Fowler’s Reserve
- How to welcome / include new residents and families
- Integrate events and groups with environmental enhancements or food exchange

FIRST STEP:
Establish working group

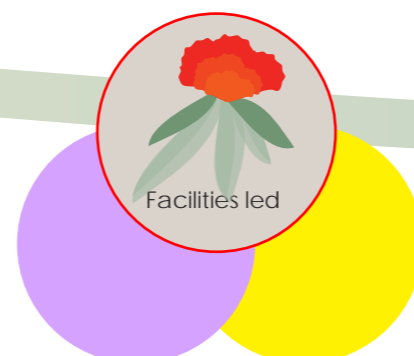


Prepare a plan and upgrade programme for **Fowler’s Reserve**.

This should consider:

- Installation of a community oven
- Views and access into the reserve
- Flexibility of space for events and programmes
- Signage and interpretation
- Ongoing maintenance
- Vegetation, community food production and seasonal change
- A place for young people

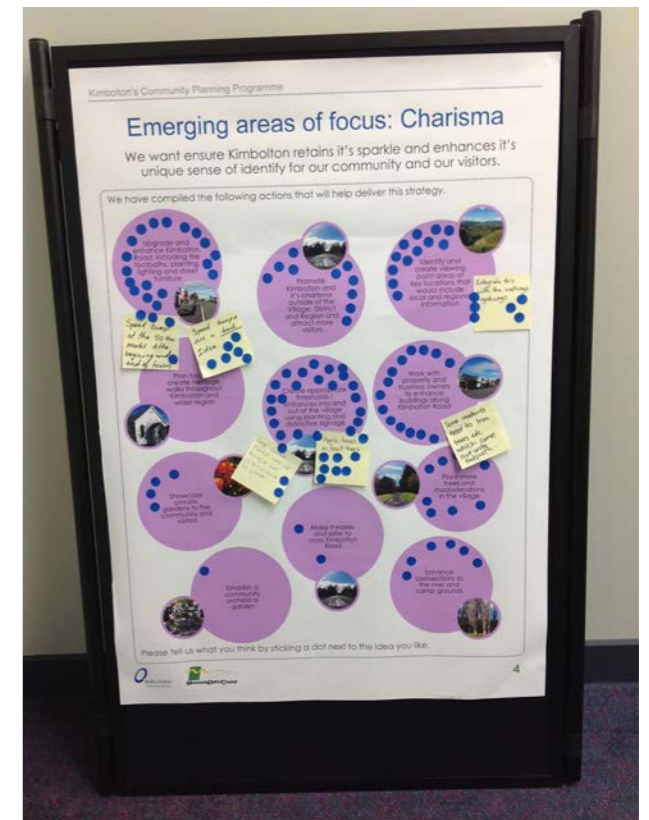
FIRST STEP:
Establish brief and engage a Landscape Architect



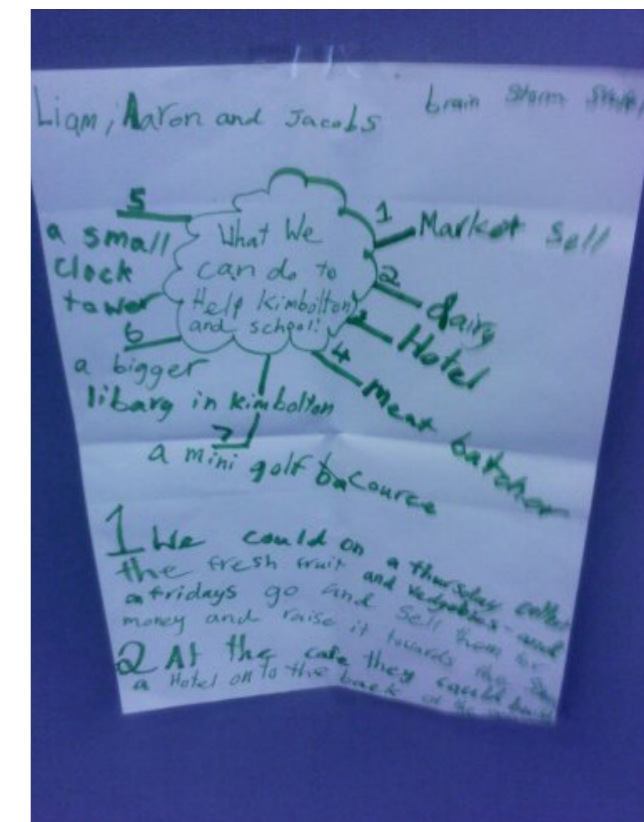
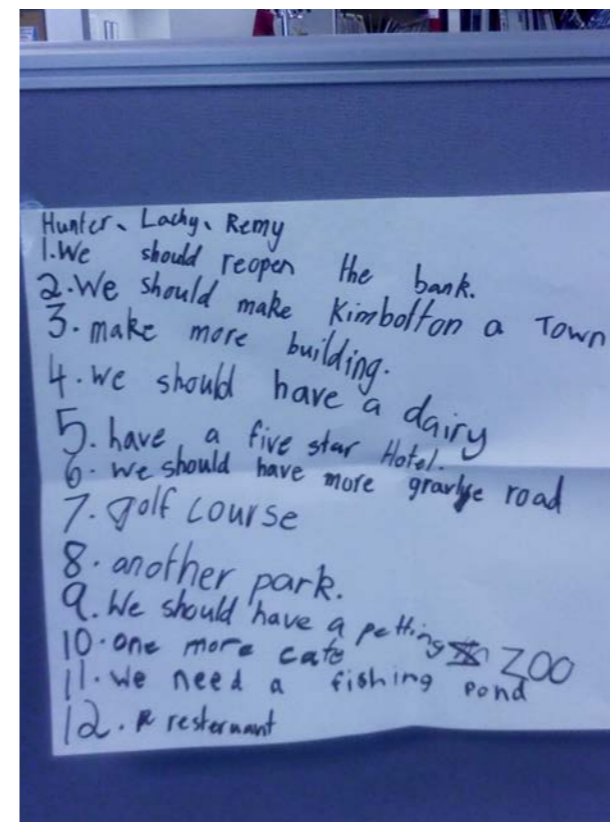
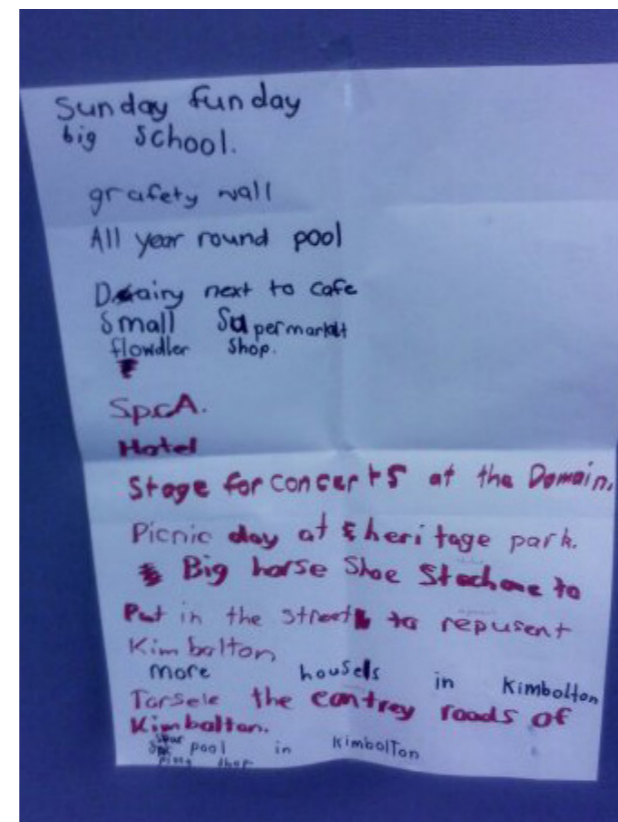
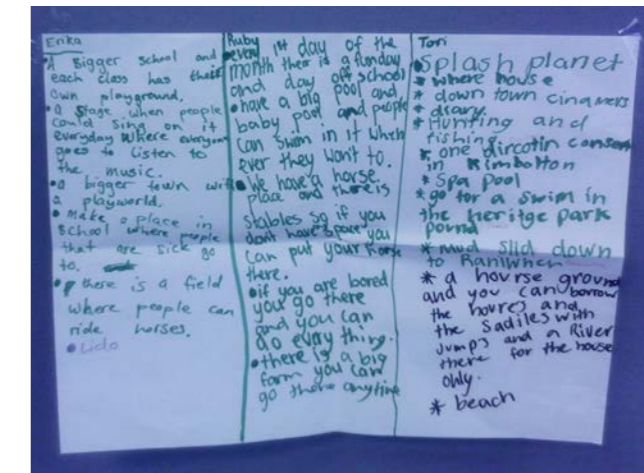
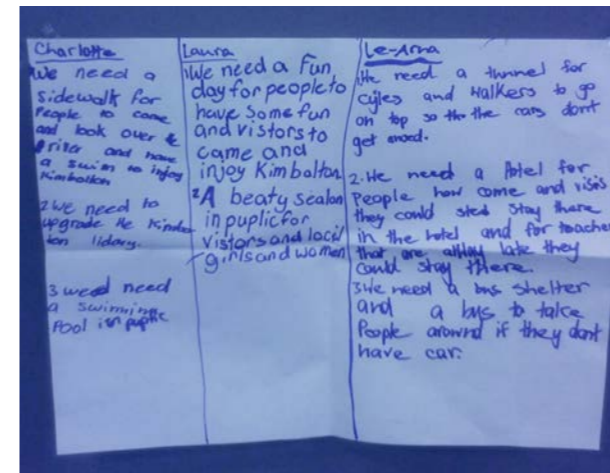
Appendix:

Photographic record of community planning process

EXHIBITION 1: 11 August 2013 at Kimbolton Community Hall



KIMBOLTON SENIOR SCHOOL WORKSHOP: 27 September 2013



Esmell's Reserve Document

THE KIMBOLTON DOMAIN

1886 a tiny piece of land set aside for recreation purposes.

2001 – the pride and joy of most people who live in the northern part of the Manawatu District.

The Domain as we know it today is situated on the southern side of Kimbolton township. It comprises of more than 5 hectares of land but not all owned by Manawatu District Council.

The original section of land set aside in 1886 is where the No. 1 rugby field and grandstand is today. It was known as the Kimbolton Cricket and Sports Ground. It was used for cricket, athletics and horse sports.

There is a programme for the Sports Day held on 13 March 1907 framed and hanging in the Kimbolton Hotel. There are names on that Committee which still ring a bell in our District today. Such names as Hon. J Bryce, McBeth, Stack, Hansen, Morton, Haythorn, Pratt, Mitchell, Haynes and Nesdale. All the present development on the Domain has been done since the end of World War II. This has been done from people around the district by donations of cash, voluntary labour and machinery. There has never been a contribution for development from the local council.

The first project after the war was the Memorial Gates and the planting of the Golden Elms down the drive. The Golden Elms were grown by Richard Thevenard in his garden and transplanted in the Domain when they were big enough. They are a living memory of the service persons who never arrived home.

In June 1952 the building known today as the Scout Den was renovated from an old shed into a changing room for the Kimbolton Rugby Club. Prior to these renovations the players changed in the shed and washed after the game outside in a horse trough. It had been known for a few minor grievances to be settled in the trough while washing.

In 1957 the Oroua Rugby sub-union was disbanded and the Oroua Rugby Club was formed and teams were entered in the Manawatu competition.

- 2 -

This put a lot of pressure on the one and only field at the Domain. A decision was made to start a fundraising campaign to acquire more land and build a grandstand and clubrooms.

The area canvassed was Cheltenham, Waituna West, Kimbolton, KIWITEA, Rangiwahia and Apliti. To raise funds, sheep were grazed and wool and lambs sold, stock drives, goose shoots and monetary donations.

The Oroua Club thrived and during the 60's were a force to be reckoned with and won many Manawatu competitions.

On 18 March 1967 the grandstand and clubrooms were officially opened and an Oroua team played an All Black selection team. At that time there was a very strong Domain Board who owned the ground, plus 10.8430 hectares on Forest Road and 8.1013 hectares on London Street. The rental money from these sections was used to develop the Domain. Next a piece of neighbouring land beside the highway was purchased. It was originally the Kimbolton Saleyards and a second piece of land belonging to the KIWITEA County Council was also acquired.

These sections contained several huge macrocarpa trees which had to be felled and the stumps blown out of the ground. This was all done by voluntary labour and machinery owned by local farmers and contractors. The ground was ploughed and levelled and this became Field No. 2. By this time through Government legislation, the Domain Boards throughout the country had been disbanded and their assets handed over to the local authority.

The KIWITEA County Council in its wisdom asked the Domain Board to remain as a working committee under the name of the Sport and Recreation Committee and to manage the assets of the previous Domain Board and to carry on with the development on the domain. The Rugby Club was still thriving and the spirit in the District was great. A third rugby ground was needed. The closest piece of land was on the right-hand side as you drive through the Memorial gates and was known as Waugh's Dam. It was used as a watering hole in dry summers for the 100-odd dairy cows that were milked within the village boundaries.

- 3 -

This section had a large dam in a gully and rapu swamp running right up to the highway, plus most of the run-off from the road was channelled into this dam. The local engineers had a look at it and decided it could be developed.

A message went out to the community for machinery and labour.

The dam was cleared and the entire section drained and the sludge from the bottom of the dam carted away. Then came the metal. Every truck, and man, in the area was engaged for several days carting metal from the Oroua river to fill the gully – once again all voluntary.

The sides of the field was shaped and No. 3 rugby field and the hard courts and playground emerged. – Well done locals.

By this time the Domain had become a central attraction and the local hall owned by the KIWITEA County Council had become the most untidy spot in the village. The KIWITEA County Council approached the Sport and Recreation Committee and asked the group if they would consider taking over the day-to-day running of the local hall and tidy up the section. In lieu of this the KIWITEA County Council would give to the Sport and Recreation Committee, the 14.5039 hectares of land at the Apliti bridge to lease and use the proceeds for hall maintenance. The Sport and Recreation Committee took up the challenge. The section was soon tidied up. Then what to do with the land. A bowling green was suggested and the answer – "let's get on with it."

The local engineers were called in but the land adjoining the hall was not big enough for a green. The Plunket Society owned a section next door – it was sold to them by the KIWITEA County Council in 1951 for the Plunket rooms. A meeting with the Plunket Society – it was resolved the KIWITEA Council could use part of their land and in return Council would maintain the Plunket Building.

- 4 -

The Bowling Green was completed but was cramped for room. Next door along Edwards Street was situated the historic Library and the Presbyterian Church. Both of their sections were fenced off and had hedges to maintain. The Sport and Recreation Committee approached the Presbyterian Church and suggested that the fence and hedge around the church be pulled out and incorporate the land into the Domain and the Domain would be responsible for keeping the church lawn mown. Today the Church is a feature point on the Domain and must be kept there at all costs.

Over the years Kimbolton has been blessed with a community of achievers who are not frightened "to put their money where their mouth is" – they have a real sense of pride in their district.

We are also very lucky to have a strong committees from the Rugby Club and Bowling Club who work well with the Community Committee.

The old-timers of Kimbolton are very quick to tell you the grandstand at the Domain is the only place in the country where you can sit in the stand and watch three games of rugby at once. You can also watch people playing on the hard courts and on the bowling green. You can drive your car into the ground and park around the playing fields without any hassles. As you sit there looking to the east, the Ruahine Ranges are directly in front of you, and to the south is open as far as the Kalkouras in the South Island.

It may be a bit cold at times but the light free-draining soil makes it very good for winter sports and this is the only rugby ground in the Manawatu which has never been closed due to adverse weather conditions.

May the Domain remain and prosper forever. Money could not buy the fun we all had developing it.

