



Natural Features and Landscapes

Fact Sheet: Draft Plan Change 65

The Manawatū District is home to a vast range of natural features and landscapes worthy of recognition and protection - from the deep, meandering river valleys of the Rangitikei River, to the expansive and densely vegetated Ruahine Ranges and the extensive, undeveloped coastal foredunes of the Manawatu coastline.

Natural features and landscapes in the District have a range of attributes that makes them visually appealing. These include physical features like indigenous vegetation, natural watercourses and natural landforms, and also include historical associations with a place.

We are required to protect Outstanding Natural Features and Landscapes, as they are considered nationally important under both the Resource Management Act and the Horizons One Plan.

What areas are affected by the changes?

The map overleaf shows the areas identified as outstanding natural features and landscapes, or significant amenity features. A higher resolution version of this map is available at www.haveyoursay.kiwi.nz.

These areas will be mapped on the District Plan Maps and as an appendix in the District Plan as part of this Plan Change.

Project Timeline:

2015

Community consultation on issues and options

Landscape Assessment Commissioned

2016

Consulted on Landscape Assessment

Review and Refine

2019

Prepare new potential plan change provisions

Consult on Draft Plan Change

Notify Proposed Plan Change late 2019

2020

Potential Hearing and Decision Released

What has been done?

Council consulted on issues and options for Outstanding Natural Features and Landscapes in May-July 2015. Council then undertook a landscape assessment and identified local areas that qualify as outstanding or significant amenity features and landscapes, which was consulted on in April 2016.

Council's Landscape Consultant reviewed and updated the landscape assessment and refined the spatial of the identified areas following feedback from landowners and the community.

The characteristics and values of each area are discussed in the landscape assessment.

What are the draft changes proposed?

A new Natural Features and Landscapes Chapter will be introduced to the District Plan to:

- Identify Natural Features and Landscapes and their characteristics and values (these will be an appendix to the chapter)
- Protect, maintain and enhance the characteristics and values of NFLs from inappropriate use and development, including network utilities
- Identify and enhance Significant Amenity Features (those areas which are more important than the general rural area, but not as significant as NFLs).
- Managing subdivision to avoid land fragmentation
- Restoration of Outstanding Natural Features and Landscapes and Significant Amenity Features where possible.

This will be achieved by proposing some rules in the District Plan to:

- Enable small scale activities such as maintaining existing tracks and walkways, planting of indigenous vegetation, removal of weeds and pests, fencing, limited amounts of vegetation clearance, maintenance of existing structures, continuation of stock grazing within the Rangitikei River Natural Feature, and earthworks under 50m³.
- Require Discretionary Activity consents for most activities in Outstanding Natural Features such as new network utilities, subdivision, construction of buildings, stock grazing.

- Require Non-Complying Activity consents for activities in Outstanding Natural Landscapes such as new network utilities, subdivision, construction of buildings, new plantation forestry, and earthworks.

What happens next?

Once we have received feedback on the draft changes, the Council will prepare a formal Plan Change under the Resource Management Act. This will include an opportunity to submit and a hearing. Council is aiming to notify a Plan Change late in 2019.

Want to know more?

Use the following link to view the proposed changes to the District Plan as below:

www.haveyoursay.kiwi.nz

- Natural Features and Landscapes Chapter
- Appendix NFL-APP1 – Natural Features and Landscapes
- Appendix NFL-APP2 – Significant Amenity Features

To make a comment, use the form on our Have your Say Page

To discuss how the Draft Plan Change - Natural Features and Landscapes may affect you, contact either:

Andrea Harris Consultant Principal Policy Planner
E: andrea.harris@mdc.govt.nz or P: 06 323 0000

Matthew Mackay Senior Policy Planner
E: matthew.mackay@mdc.govt.nz or P: 06 323 0000

PC65 Outstanding Natural Features and Landscapes

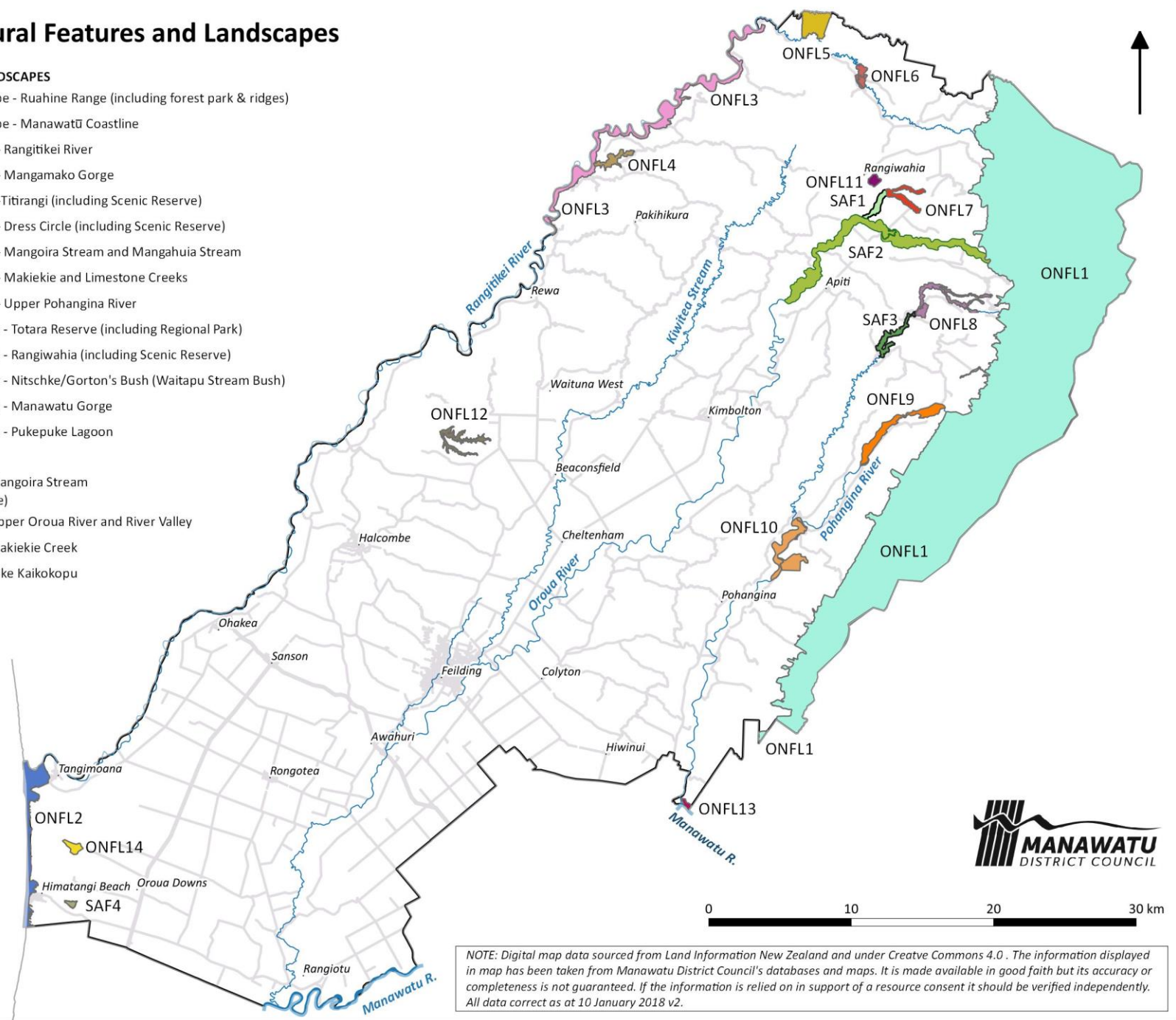
OUTSTANDING NATURAL FEATURES AND LANDSCAPES

- ONFL 1 - Outstanding Natural Landscape - Ruahine Range (including forest park & ridges)
- ONFL 2 - Outstanding Natural Landscape - Manawatū Coastline
- ONFL 3 - Outstanding Natural Feature - Rangitikei River
- ONFL 4 - Outstanding Natural Feature - Mangamako Gorge
- ONFL 5 - Outstanding Natural Feature - Titirangi (including Scenic Reserve)
- ONFL 6 - Outstanding Natural Feature - Dress Circle (including Scenic Reserve)
- ONFL 7 - Outstanding Natural Feature - Mangoira Stream and Mangahuia Stream
- ONFL 8 - Outstanding Natural Feature - Makiekie and Limestone Creeks
- ONFL 9 - Outstanding Natural Feature - Upper Pohangina River
- ONFL 10 - Outstanding Natural Feature - Totara Reserve (including Regional Park)
- ONFL 11 - Outstanding Natural Feature - Rangiwahia (including Scenic Reserve)
- ONFL 12 - Outstanding Natural Feature - Nitschke/Gorton's Bush (Waitapu Stream Bush)
- ONFL 13 - Outstanding Natural Feature - Manawatu Gorge
- ONFL 14 - Outstanding Natural Feature - Pukepuke Lagoon

SIGNIFICANT AMENITY FEATURES

- SAF 1 - Significant Amenity Feature - Mangoira Stream (downstream of Mangahuia confluence)
- SAF 2 - Significant Amenity Feature - Upper Oroua River and River Valley
- SAF 3 - Significant Amenity Feature - Makiekie Creek
- SAF 4 - Significant Amenity Feature - Lake Kaikopu

- Major Arterial (State Highway)
- Minor Arterial or Collector Road
- Local Road
- River or Stream
- Manawatu District



NOTE: Digital map data sourced from Land Information New Zealand and under Creative Commons 4.0. The information displayed in map has been taken from Manawatu District Council's databases and maps. It is made available in good faith but its accuracy or completeness is not guaranteed. If the information is relied on in support of a resource consent it should be verified independently. All data correct as at 10 January 2018 v2.

