



Feilding Library Redevelopment

Te Ara Mātauranga





Public Libraries of Today

“Ko te ātea a Rōiho rāua ko Rōake, ko te mātauranga me te pūkenga tangata”

(Education and innovation are seeded on the courtyard of logic and creativity)

“A public library today is a focal point, a centre for the whole community and its visitors, a meeting place, a site for education, a source of inspiration and innovation, a connection to the wider world, a democratic place for sharing knowledge, experience and opinion.”

*Kat Cuttriss, Chair of Public Libraries of New Zealand
Public Libraries of New Zealand Strategic Framework 2020-2025*



Principles

- Te Tiriti o Waitangi
- Future proofing intergenerational connections (He Tuku Iho)
- Building fit for purpose, now and into the future and is earthquake strengthened (He Whakaruruhau)
- Fits with the Goals in Council's Library Strategic Framework (He Aronga Matua)
- Fits with Makino Precinct Plan (He Pūnaha Hauropi)
- Creating pathways to promote and develop potential (He Ara Whakaaraara)



GOAL 1 - WHAKARAUKA

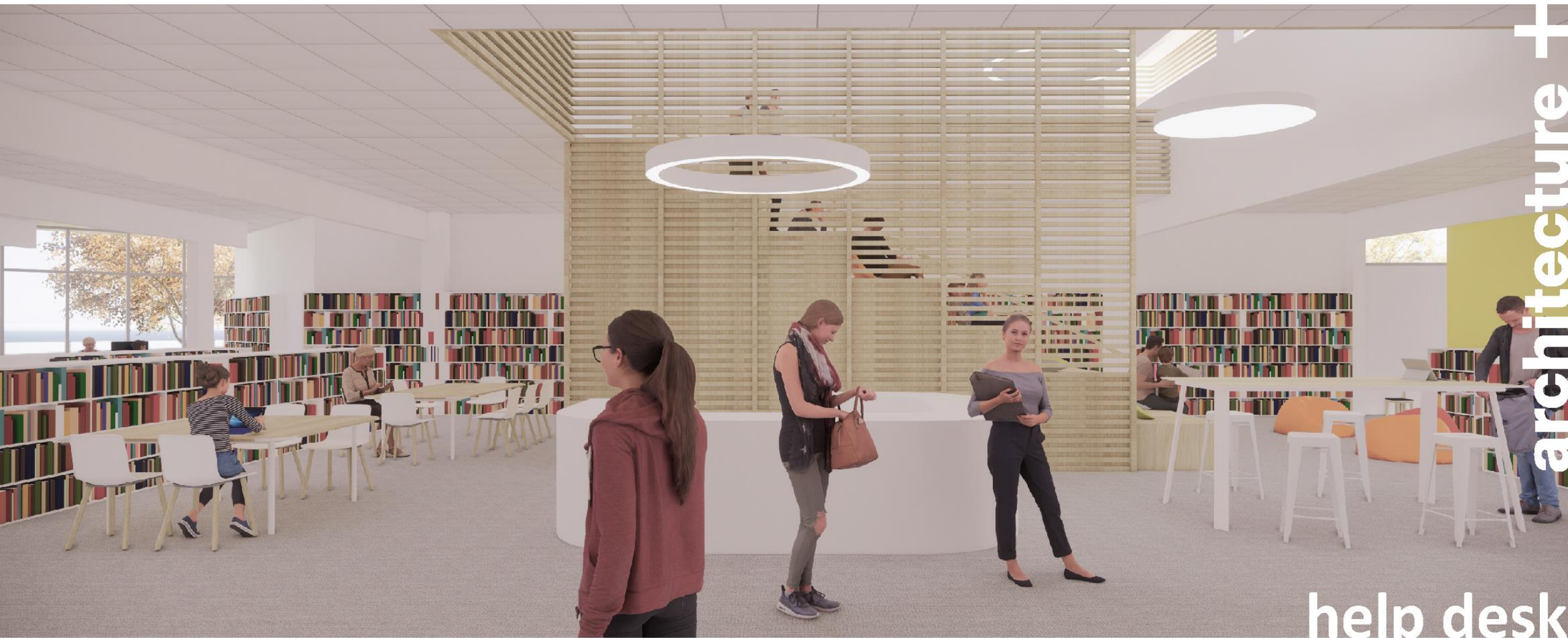
Leading the way

Relevant to everyone

- Modern building fit for purpose now and into the future
- Relevant spaces for ALL library users
- Modern shelving and layout to promote and encourage borrowing
- Improved accessibility



examples of lattice work inspired by Te Wānanga o Raukawa, Tennyson + Brown Architects



GOAL 2 - WHĀNGAIHIA

Act as a catalyst for learning, discovery and creation

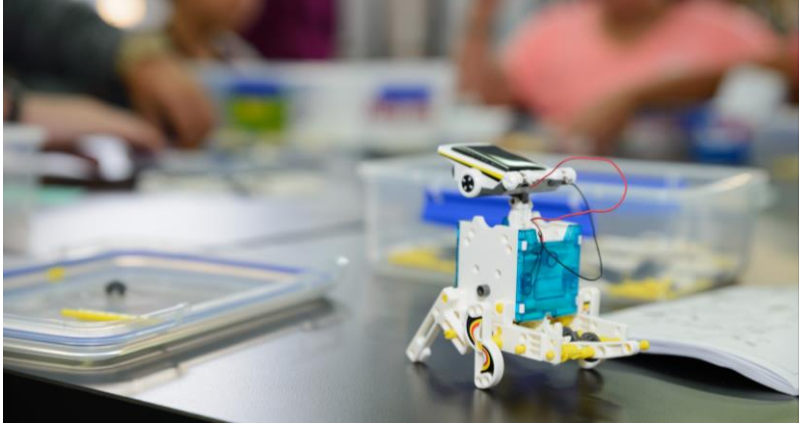
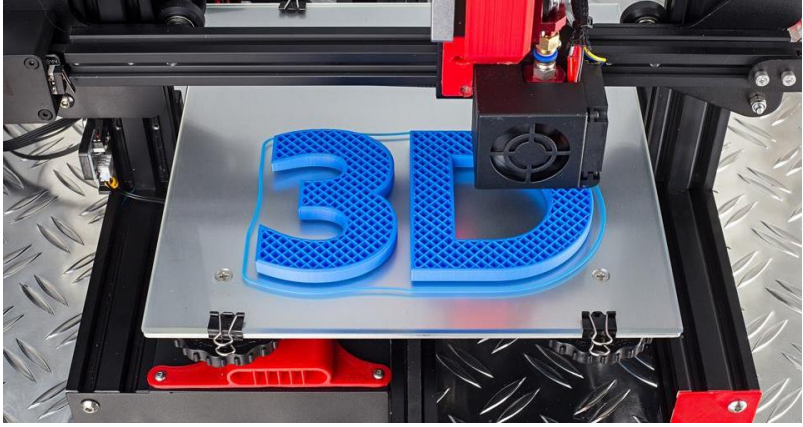
- Meeting rooms
 - Flexible spaces
 - Tea / coffee facilities
- Event spaces
 - Flexible spaces
 - Indoor / outdoor flow





architecture +

multi-use space



GOAL 3 - WHAKAKAIRANGI

Revolutionise our Digital Environment

- Introduction of a Full Makerspace
 - Reuse existing equipment – 3D printers, sewing machines, etc
 - New equipment – laser cutter, CNC machine, etc
- Flexible spaces (indoor and outdoor)
- Technology accessible throughout the facility

GOAL 4 - WHAKAHONOHONO

Work with others to add value to our community

- Te Tiriti o Waitangi (whānau, hapū, and iwi Māori)
- Cultural and heritage space
- Meeting rooms
- Flexible spaces
- Accessible technology
- Partnerships (Genealogy groups, schools, café, etc)





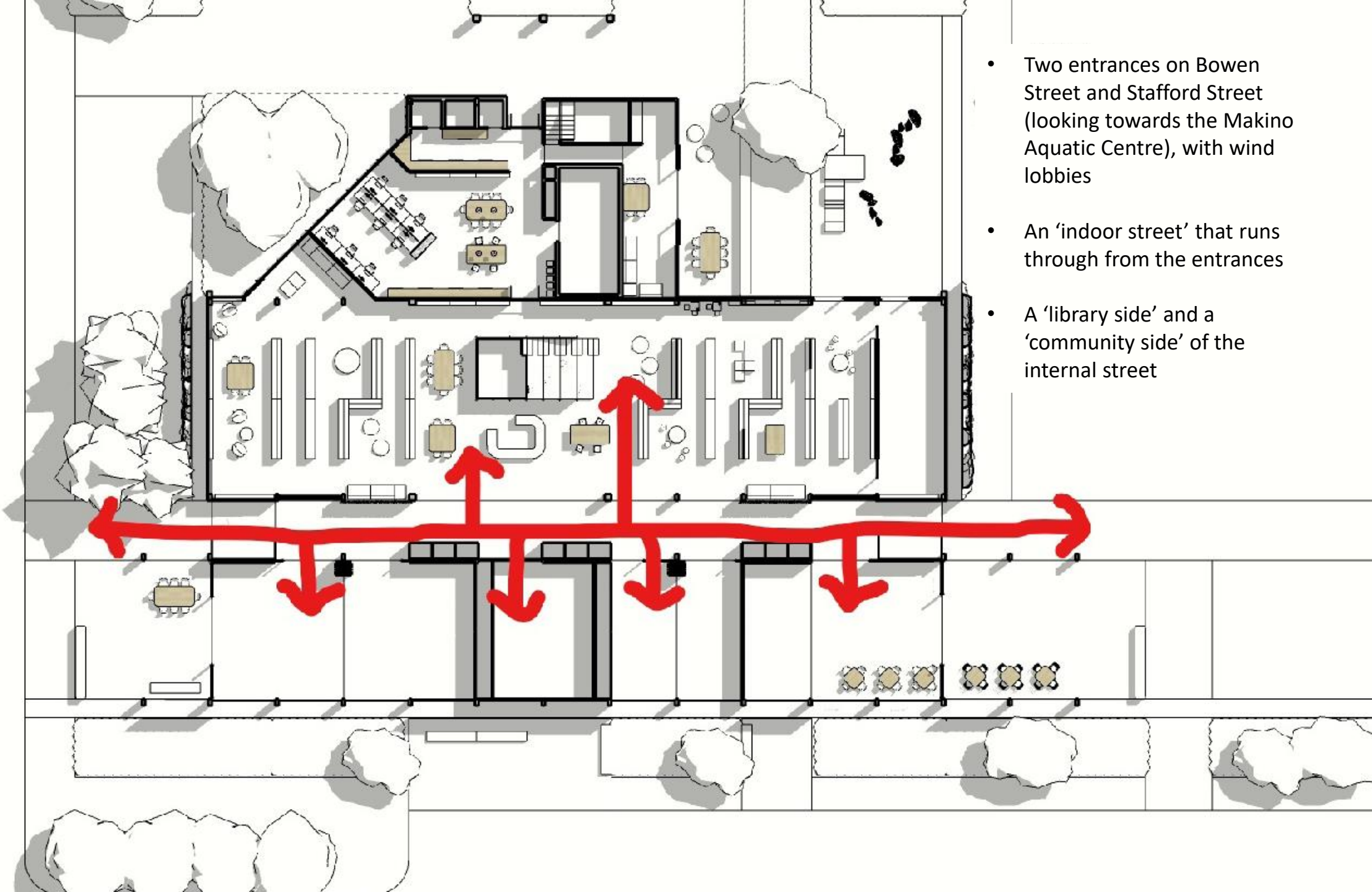
architecture +

genealogy



architecture +

multi-use space



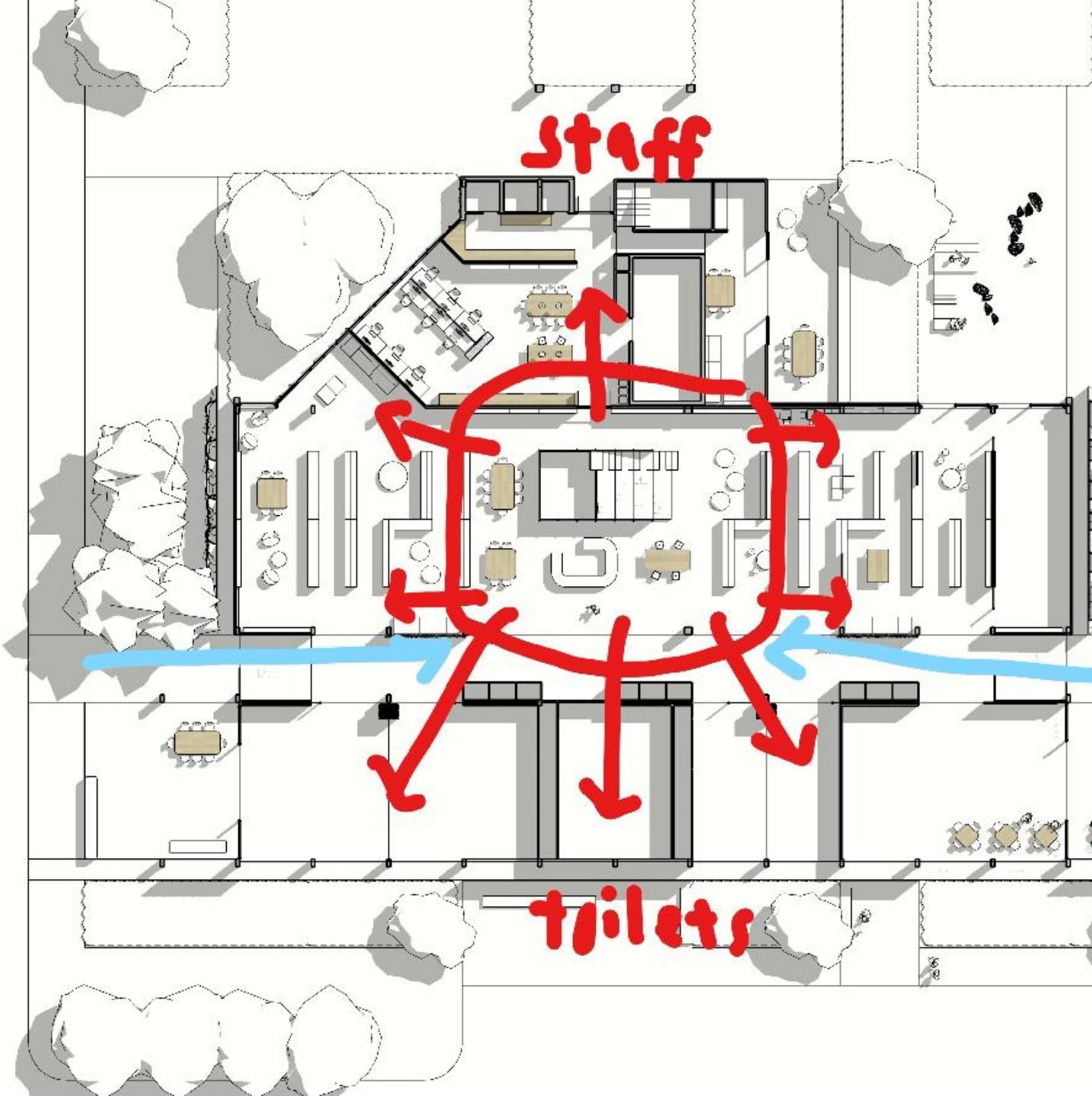
- Two entrances on Bowen Street and Stafford Street (looking towards the Makino Aquatic Centre), with wind lobbies
- An 'indoor street' that runs through from the entrances
- A 'library side' and a 'community side' of the internal street

Bowen St



Stafford /
Hobson St





- The 'heart' of the building draws people in and feeds the multiple function areas of the library
 - Collection space (Books, Magazines, etc)
 - Meeting and event spaces
 - Makerspace (3D printers, sewing machine, etc)
 - Café
 - Children's spaces – indoors and out
 - Cultural & heritage spaces
 - Mezzanine area & tiered seating
 - Quiet space
 - Social interaction spaces
 - Technology spaces (computers, etc)

example of inlay inspired by He Ara Kotahi bridge, Rangitāne



example of etching inspired by Te Wānanga o Raukawa, Tennen + Brown Architects



architecture +

indoor street



architecture +

mezzanine

more
quiet



more
noisy

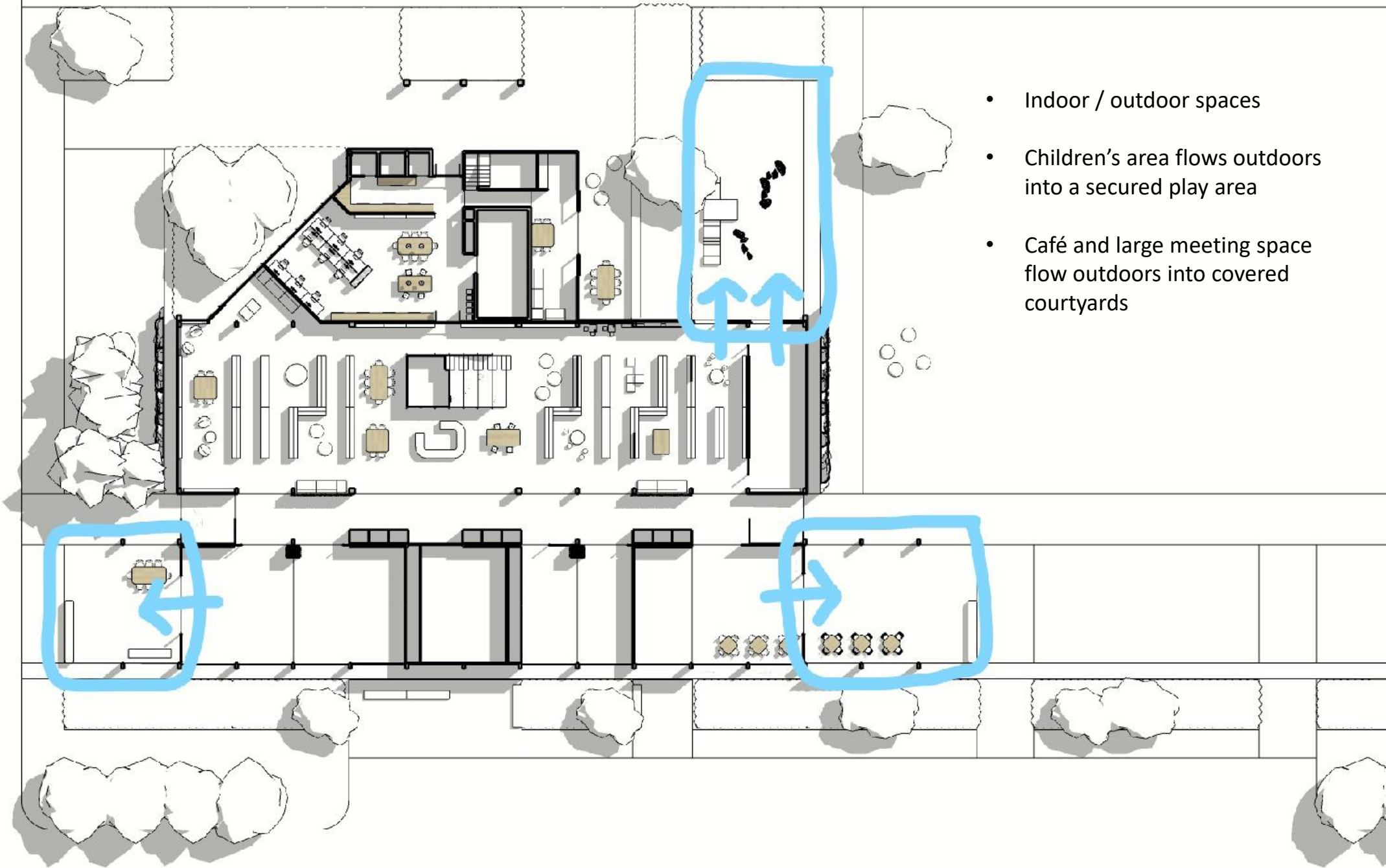
- The adult end is set up to be more 'quiet'
- The children's end is set up to cope with noise



architecture +

quiet space





- Indoor / outdoor spaces
- Children's area flows outdoors into a secured play area
- Café and large meeting space flow outdoors into covered courtyards



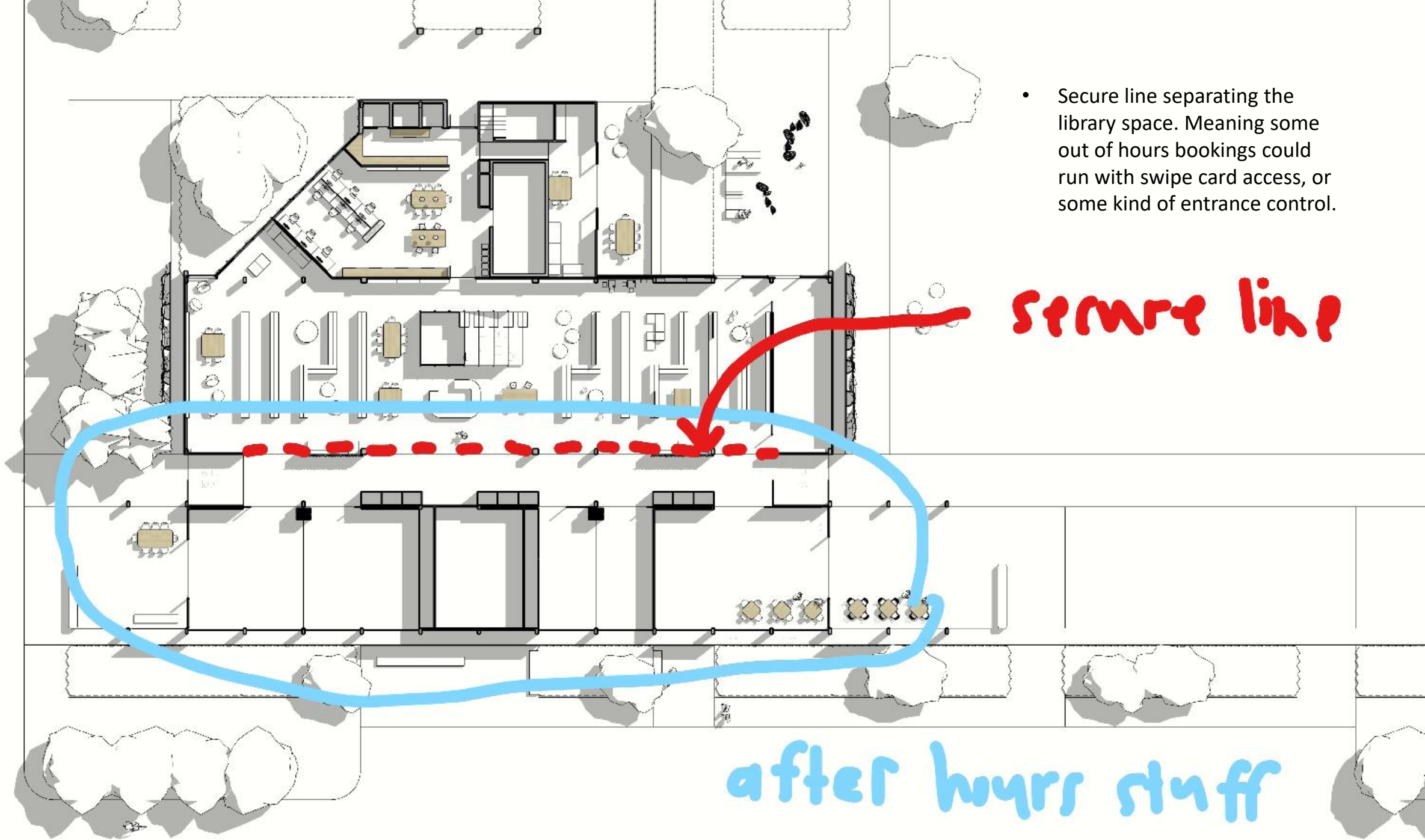
architecture +

event space / park

- Secure line separating the library space. Meaning some out of hours bookings could run with swipe card access, or some kind of entrance control.

secure line

after hours stuff



bowen street



architecture +

ground floor plan

bowen street



mezzanine

hoist

storage

mezzanine floor plan

architecture +